

# SIMBRAH World



Fall • 2017

# Market Demands QUALITY

The market demands quality in the cattle business today and that's why we have taken many steps to acquire functional, high quality individuals with proven and desired genetics and phenotypes.

When you demand quality, look to 7N, we have what the market demands.

*We have lots 133-142 selling in the Simbrah Synergy X Sale, Sept. 23rd—check out the quality we are offering.*



## SMITH POSSIBILITIES

2016 National Grand Champion Percentage Bull. He's a son of Steel Force and out of the International Champion Female, Smith Ciao Bella, who is a daughter of Nu Approach and the great Bella Bella. He currently ranks in the top 2% of the breed for API and TI. We are using him heavily in our herd and we are excited about the calves and new blood he is adding to Simbrah.



## 7N CHARMIN GAL 196D

**SHE SELLS IN**



This is a full sister to RFI Lady Charm, the 2014 International Reserve Grand Champion Female and she sells in Synergy. She's a daughter of Smith Specialist and her dam, Stelletto is a Charismatic daughter—this means if you go back one more generation you will see Sargeant and Nu Wave II, which is recognized as the "magical mating" in the breed. She sells open and you can add the magic to your herd with her.



## SMITH WHITS MISS AMAZING

We added this purebred, homozygous polled Simmental to use in both our Simmie and Simbrah programs. She's a daughter of Smith McCrary Andy Black and goes back to Built Right on the dam's side. Her pedigree includes Dream On, Triple C Amazing and a dose of the Ebony's Antoniette cow. You'll want to see her progeny. Check out her daughter, selling as Lot 35 in Synergy.



## RANCH

Pete Nieschwietz  
P.O. Box 330 • Falls City, TX 78113  
(956) 460-6002 • [pjnieschwietz@sbcglobal.net](mailto:pjnieschwietz@sbcglobal.net)  
[www.7nranch.net](http://www.7nranch.net)  
*Ranches located in Donna and Falls City*



# THE FUTURE.

That's why we're breeding quality today.



We've made some very calculated moves to take the quality of our program to a higher level and we would like to tell you about those acquisitions.

We have joined Hallak Ranch in the ownership of PRR Revolution that has some very impressive EPD rankings. We also purchased the pick of the Pine Ridge bull calves and our choice, PRR Unanimous Decision has created a lot of excitement. Both of these bulls have great EPDs, are super thick, dark red and blaze-faced.

We've also acquired the Mossy Creek herd from Kevin Kent. He emphasized high performance, strong fleshing ability, as well as maternal qualities in his breeding program of diverse genetics.

We are very excited about the calves we have on the ground from our sires, Smith McCrary Fireball and RFI Red Raider. A daughter of Fireball that we raised was the second-high seller at the International Sale in Houston this year.

We're making moves today to be ready for the future.



**Monte Christo is proud to  
be part of this event  
See our Lots—100-104  
September 23rd!**

**MONTCHRISTO**  
*Cattle Co.*

Jud & Margie Flowers  
12111 North Bryan Road  
Mission, Texas 78541

956/207-2087 • judf@lonestarcitrus.com



## New Foundation Lines

We've recently added these three young Simmental females to our young donor lineup. They will be used to strengthen our Simmental program and develop new lines within our Simbrah herd. Cow families have always been our foundation and these three have all the potential to build their own line. Watch for their influence in Simbrah!



CMFM Gracie 107B-daughter of Steel Force and the Gracie donor featured at Circle M Farms and sired by Built Right.



WLE Smith Reba D24-daughter of WLE Uno Mas and the Buttercow cow featured at Wesner Livestock and sired by Lock Out.



WLE Smith Missy C493-double bred daughter of the immortal Shawnee Miss 770P, dam of Uno Mas, Revolution, Big Deal and Twang.

**SEE THESE FEMALES ON  
DISPLAY AT SIMBRAH SYNERGY X**



Tim Smith, Joel Isgrig & Haley Smith  
P.O. Box 330, Giddings, TX 78942  
512-587-7896 • smithgenetics1@gmail.com



## Features...

### 10 Involved and Passionate

Get to know the Hill Family and learn about their commitment to agriculture.

### 20 Follow The Flow

A detailed look at handling livestock and how to make your time in the pens less stressful for all.

### 23 Balancing Mineral Needs

A look at factors that impact your cattle's mineral needs.

## Of Interest...

- 6 News You Can Use
- 22 MAS Showcase Report
- 31 Save The Date
- 31 Index To Advertiser

## On The Cover...

Krystal Baring, Baring Cattle Co. captured this image of her nephew, Luke Gonzalez and his Simbrah heifer.



# SIMBRAH World

FALL, 2017 • VOLUME VIII, NUMBER 2

## Southern Livestock Publishing, Inc.

### Mailing Address:

P.O. Box 791364 • San Antonio, TX 78279-1364

Office Located: 407 Breesport • San Antonio, TX 78216

Phone: 210/524-9697 • Fax: 210/524-9690

E-mail: [slivestock@southernlivestock.com](mailto:slivestock@southernlivestock.com)

[www.southernlivestock.com](http://www.southernlivestock.com)

**Publishers:** Jim Banner and Michael Sturgess

**Editor:** Daren A. McCutchen

**Contributing Editor:** Martha Hollida Garrett

**Office Manager/Bookkeeping:** Jean Tiedeman

### Livestock Advertising:

Martha Hollida Garrett ..... Mob. 903/316-8465

### Commercial Advertising:

Loren Jackson - Manager ..... 210/867-5553

### Copy & Contract Regulations:

The Publishers reserve the right to accept or refuse advertising. The Publishers reserve the right to label as "Advertisement" any copy that simulates editorial comment.

Advertiser agrees to waive the Publishers and its employees of responsibility from any and all claims or suits arising out of publication of advertising based on information supplied by the advertiser or his agent.

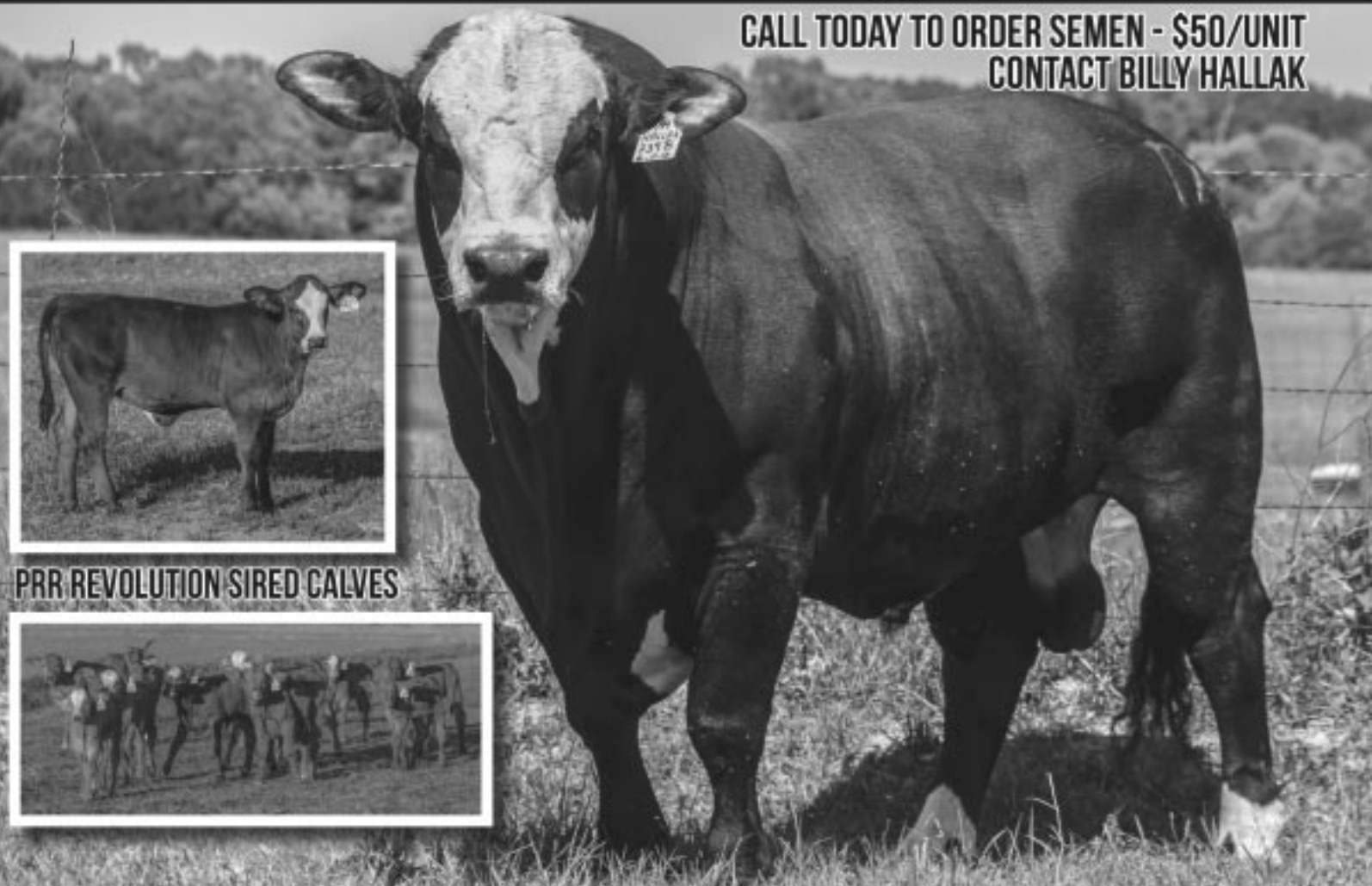
The Publishers hereby expressly limit their liability resulting from any and all misprints, errors and/or the running of a corrected advertisement or editorial correction notice.

The views and opinions expressed in all editorial material are those of the writer or persons interviewed and not necessarily those of the Publishers.

Your viewpoint and opinions are welcome. The Publishers will make every effort to publish responsible replies. The Publishers however, reserve the right to edit or reject material which they deem objectionable.

# OPPORTUNITY IS HERE. Take Advantage Of It.

CALL TODAY TO ORDER SEMEN - \$50/UNIT  
CONTACT BILLY HALLAK



PRR REVOLUTION Sired CALVES

## OPPORTUNITY IS HERE FOR YOU TO BRING QUALITY AND REVOLUTION TO YOUR PROGRAM—TAKE ADVANTAGE OF IT

Owned By:

### NH HALLAK RANCH

Billy & Malika Hallak

1167 Oval Drive, Athens, Texas 75751

903/203-8524 • Nhalla@hotmail.com

www.hallakranch.com

### MONTE CRISTO Cattle Co.

Jud & Margie Flowers

12111 North Bryan Road, Mission, Texas 78541

956/207-2087 • judf@lonestarcitrus.com

Add the breeding power of PRR Revolution 739B to your program. He is a homozygous polled, purebred Simbrah bull with some very impressive stats:

- Sired by PRR Alamo 690Y
- Genetically tested to be homozygous polled
- Genetically tested and is free of the dilutor gene
- Dark red in color and goggle-eyed
- He ranks in the top 3% of the breed for calving ease, top 15% for birth weight, 20% for stayability and 15% for marbling
- And his EPDs reflect a top 10% ranking for All Purpose Index and a top 20% for Terminal Index, which are two figures that tell you this bull can work



# Alamo City Simbrah Online Sale Sept. 18-20

[www.cattleinmotion.com](http://www.cattleinmotion.com)

Sale offering will feature breeding pieces, as well as top show prospects.

If you're looking for a heifer to campaign and take you to the winner's circle, then get online and look at the baby dolls we have for sale.

## SELLING CATTLE FROM THESE TOP PROGRAMS:

La Morra Ranch • 210/275-0839

Baring Cattle Company • 210/867-6651

Freasier Ranch • 210/313-0926

**ALL THESE CATTLE SOLD IN PREVIOUS  
ALAMO SALES AND WENT ON  
TO BE CHAMPIONS**





# Like Father, Like Son.

The next generation of greatness is here and we're excited about the calves we have coming, as all three of these young sons are being used heavily in our fall breeding rotation. Keep your eye on these young bulls and their progeny!



## Smith Stout N Black

Polled, purebred Simmental son of Dream On and out of our donor Triple C She's Amazing. Ranks in the top 25% of the Simmental breed for API.



## Smith Just Because

Polled, three-quarter son of Smith Stout N Black and out of Smith Just A Diva. Ranks top 1% for API and top 4% for TI. Stacked pedigree combines Dream On, Power Drive, Satisfies, and JW Black in the pedigree.



## Smith McCrary Fireball

Polled, purebred son of Smith Satisfies and out of Smith McCrary Hi Price, a member of the Priceless Cow Family. Ranks in the top 15% for API.



## Smith Secret To Success

Polled, three-quarter son of Smith McCrary Fireball and out of our Simmental donor, Smith 7N Awesome N Black. Ranks in the top 3% for API and top 5% for TI.



## RFI Real Deal

Polled, purebred son of Evan and out of Smith Also N Red daughter. Currently ranked in the top 1% API and TI.



## RFI Done Deal

Polled, three-quarter son of RFI Real Deal and out of Ankonian Red Caesar bred dam. Currently ranked in the top 1% of API and TI.



Tim Smith • Joel Isgrig • Haley Smith  
P.O. Box 330 • 1316 PR 2231 • Giddings, Texas 78942  
512/587-7896 • smithgenetics1@gmail.com

[www.smithgenetics.com](http://www.smithgenetics.com)





plete list of champions can be accessed at [www.simbrahworld.com](http://www.simbrahworld.com) under the junior news tab.



## Thank you to AJSR Sponsors

This year's American Junior Simbrah Roundup featured prizes for 1st-10th places in all the educational contests for all three divisions. Dean Fuchs and team put together an impressive set of awards for our juniors. Thank you to the following sponsors who made that possible:

Top C Cattle Company, Muddy Waters Cattle Co., Joe B. Rodriguez/La Morra Ranch, Rafter M Cattle Company, Mike & Paula Lanier, Littlefoot Cattle Company, Knezek Simmental/Simbrah Ranch, LMC Daydream Partners, David and Pat Boenker, Victor Guerra, Rene Vela Family, La Muneca, 6G Ranch, IGS Cattle Co/Brolaco Cattle Co., Kallie Kram/Glenda Stavinotha, Lost Cause Ranch, KF Livestock, LPJ Ranch, Simbrah World, Hallak Ranch, Shoppa's Farm Supply - R Jedlicka, La Reina Ranch, Laura Guerra Ramirez, Law Office, James Cano Family, Hewitts Cherokee Ranch, Dustin Black and McCrary Farms.

## American Junior Simbrah Roundup held

The American Junior Simbrah Roundup held this summer drew a record number of exhibitors and cattle. Ninety-four exhibitors and 143 head of Simbrah cattle were on hand in Crescent, Texas for the annual event. It was the largest to date and full details, photos of all contest winners and a com-

## New hand at Fields Cattle

Ryder Dominic Fields was born March 15, 2017 at 4:50 a.m. in Bryan, Texas to Adelyn Allen and Webb Fields. He

# RAISING THE BAR FOR QUALITY

We have been in the Simbrah business for decades and we continue to make purchases and mating decisions that raise the bar on the quality.

We added Smith Detonator as our predominate herd sire to incorporate the bloodlines of Smith Satisfies and Smith Bella Bella, as his dam is Smith Ciao Bella. In addition to the proven bloodlines and appealing phenotypes, he is delivering desired EPDs as his API is in the top 4% of the breed and his TI is in the top 10%.

Smith JJJ Sassafras exemplifies the quality we are achieving. She's a daughter of Satisfies and out is out of a three-quarter, Smith Matt N Black bred dam. She has an API ranking in the top 5% of the breed and her TI is in the top 1%. In addition, she was the 2017 National Reserve Junior Champion Female. Watch for her impact in our herd.

### **SIMBRAH SYNERGY X, SEPT. 23. OUR LOTS ARE 118-125.**

This pair sells. The cow traces back to the great She Moves and Evan and the fancy heifer calf at side is by Detonator. She sells bred back to Detonator. Join us at the event for great cattle and our Raos Bakery breakfasts both days!

### **TRIPLE J RANCH/CARPENTER PARTNERSHIP**

Jake and Amber Tortorice 409/782-5892 or 409/287-3234  
Jake and Mary Tortorice • Sour Lake, Texas • [jt@raosbakery.com](mailto:jt@raosbakery.com)

**Smith  
Detonator**



**Smith JJJ  
Sassafras**



**This pair  
sells in  
Synergy**







Ryder Dominic Fields

was 8 pounds and 7 ounces, and measured in at 21 3/4 inches long. He's the grandson of Kim and James Becker of Becker Livestock Services, Bryan, Texas and Tim and Karen Fields of Fields Cattle, Mt. Pleasant, Texas.

## New addition to Henly Family

Brooke Hilton was born to Casey and Haley Henly, Brenham, Texas on May 27, 2017. She weighed 8 pounds and 2 ounces and arrived at 20 inches long. Grandparents are Edwin and Lisa Henly, San Augustine, Texas.



Brooke Hilton

## Stavinohas compete in 2017 Texas Cattle Feeders Association Junior Fed Beef Challenge

Amelia and Robert Stavinoha, of Eagle Lake, Texas made their way to the campus of West Texas A&M University on Friday, July 28, to showcase their skills and knowledge at

(Continued on page 12)



Amelia and Robert Stavinoha

## Another Jewel

We're proud to offer Smith TMP Jewels 109E in partnership with Smith Genetics at the Simbrah Synergy X Sale, Sept. 23

109E is a daughter of our donor, Smith RFI Hidden Jewel, the 2014 ASA National Champion Female, who is part of the Pure Diamond Cow Family. Hidden Jewel is also the dam of Red Jewel, the 2015 International Champion Bull, so 109E and Red Jewel are maternal siblings. 109E is sired by Smith McCrary Fireball and is a fancy, polled baby doll. She will be haltered and ready for the show ring. Hidden Jewel continues to out produce herself and 109E is the latest example.



Smith TMP Jewels 109E-  
She sells in Synergy



Smith RFI Hidden  
Jewel-dam of 109E.

We have moved to East Texas—Henderson to be exact. We're still getting everything moved and set up, but we invite you to stop in as your travels bring you to the Piney Woods.

**Temperance**  
Livestock Company

David and Thuy Grimes  
Kaleb and Satorina Fontenot  
9148 CR 415W • Henderson, Texas 75654  
832/594-7550  
info@temple.com • www.temperancelivestock.com

## He's Named

# SUPER

## For A Lot Of Reasons

### BURCH SUPER BULL TOO

We'd like to introduce our new herd sire, Burch Super Bull Too. We named him that for many reasons—his pedigree, his data and his phenotype.

- He's a son of Smith Satisfies and his dam is our 326 donor that is a daughter of PRR Red Ammo and out of the great La Muneca female 3E/89.

- He ranks in the top 5% of the breed for Maternal Calving Ease; top 10% for Calving Ease, Birth Weight and BackFat; top 20% for Yield Grade and top 30% for Marbling. Plus he's in the top 25% for both API and TI.

- He's solid red, polled, long bodied, very clean in his lines and stout.



AND YOU CAN ADD HIM TO YOUR HERD AS SEVERAL OF OUR LOTS IN SYNERGY ARE BRED TO HIM! JOIN US SEPT. 23 FOR SIMBRAH SYNERGY X. OUR LOTS ARE 126-130.

For additional information on Burch Super Bull Too and Synergy—contact us

## BURCH FARMS

Rickey Burch Family • P.O. Box 755 • Hempstead, Texas 77445  
979/826-3231 office • 713/206-2579 cell • burchfarms@peoplepc.com • www.burchcattle.com



# *Visit Our Pastures* FOR YOUR SIMBRAH



*Quality... Quantity... Integrity.*

# **St**

**Strack Farms**  
5465 PR 4280  
Normangee, Texas 77871  
281-455-5896



# DISCOVER THE *difference*

*Donor  
Power...*



**RFI TINKER BELL**

She has the magic mating of Nu Wave II x Sargeant and she was the 2009 San Antonio Grand Champion Female. She has many functional, high quality daughters in production. She ranks in the top 10% of the breed for API and 1% for TI.



**SMITH PRICELESS WISH**

She is a member of the Priceless Cow Family, as she is an own daughter of the matriarch herself and is sired by Smith Nu Approach. We are breeding this purebred several different ways in embryo transfer. She's top 35% for API and top 20% for TI.

JOIN US *Sept. 23rd*  
FOR THE 10th ANNUAL EVENT



OUR LOTS ARE 143-148  
Four daughters of Inspired sell!

**McCrory Farms**  
SIMMENTAL & SIMBRAH CATTLE



**SMITH MCCR HONEY MOO 111C**

This three-quarter x one-quarter female is entering our donor program after a successful show career for Hallie Hackett, in fact she finished on a high note as the 2017 MAS Reserve Grand Champion Percentage Female. She's a daughter of WHF Devil's Cut and is out of Smith Moving Up, who is a maternal sister to Smith JJJ Dancing Moves, a high seller at the 2014 Simbrah Synergy. She has a heifer calf at side by Smith Trendsetter, and she is now entering our donor program. She ranks in the top 2% of the breed for API and top 4% for TI.



**SMITH RFI NUANCED 325W**

She joined our program after our nephew, Zach, showed her to many championships and she has made an impact! Nuanced is an Andy daughter, going back to a Trendsetter bred dam. She is a three-quarter blood and her current rankings show her in the top 3% for API and her TI is top 5%.

She already has to her credit, Smith RFI MCCR Gangster, a young sire that has lots of potential in the breed. Her females have the same overall power as she does with lots of body and a big flat hip! We are flushing her to a number of sires for purebred and percentage babies.

*Mark & Martha McCrory*

903-667-5135 • 903-278-6819  
307 North Runnels • DeKalb, Texas 75559  
mamamc4@aol.com • We accept calf scramble certificates.

[www.mccroryfarms.net](http://www.mccroryfarms.net)



## News...

(Continued from page 9)

the 2017 Texas Cattle Feeders Association (TCFA) Junior Fed Beef Challenge.

This annual contest allows students age nine through graduating seniors the opportunity to gain industry knowledge and practical experience in commercial cattle feeding. Students feed a pen of three steers and compete on their knowledge of the industry through a written test and an interview or oral presentation, depending on their division. Cattle performance points are also figured into the score to determine the winners of more than \$20,000 in prizes, premiums and college scholarships.

The overall champion of the contest and winner of a \$5,000 scholarship, a plaque and trophy buckle sponsored by Zoetis was Amelia. In the junior division, Leroy was named the overall champion, receiving a \$200 prize, a plaque and a trophy buckle sponsored by Merck Animal Health. This was a repeat win for both Amelia and Robert, as they were both overall champions in the 2016 Junior Fed Beef Challenge.

TCFA represents the cattle feeding industry in Texas, Oklahoma and New Mexico. Known as Cattle Feeding Country, this area is the largest cattle feeding region in America and annually markets about 6 million fed cattle – 28 percent of the nation's fed cattle production. To find out more information about TCFA, visit [www.tcfa.org](http://www.tcfa.org).

## Remembering Sally Buxkemper

The Simbrah breed lost a great advocate, breeder, friend and mentor in the passing of Sally Buxkemper in March of 2017. She was very involved in the American Simmental Association, American Junior Simmental Association, as well as the Texas Simmental/Simbrah Association and the Texas Junior Simmental/Simbrah Association. Memorials may be made to the American Simmental Association Foundation, One Genetics Way, Bozeman, Montana 59718, as a special fund has been designated in her honor. For more on Sally's life visit <http://www.legacy.com/obituaries/gosanangelo/obituary>.



Sally Buxkemper

She's

**TOP  
CHOICE**



Smith JCC Top Choice 917D

Smith JCC Top Choice has a pedigree that should make your head spin—She's sired by Smith Detonator—which gives you the proven and popular sire, Smith Satisfies and Smith Ciao Bella, an International Champion. Trace that back to the next generation and you have Smith NF Simply Great, Smith Nu Approach and the great Smith Bella Bella, also an International Champion. Oh yes, it's just as impressive on the dam's side, as you have Smith Johnson Top Price, a daughter of Smith Isgrig Charismatic, a bull recognized breed wide for his maternal power and Smith Priceless—one of the most proven, prolific, productive in terms of accomplishments and dollars of any cow in the breed.

Top Choice is currently bred to the young sire, Smith Born To Dare, who is a Devil's Cut x Oprah bred son. She will be entering our donor herd once she calves.

*We are excited about the future she holds for our program and the breed.*

**JOHNSON CATTLE CO.**

Wayne Johnson 830/391-2571  
Kenny Johnson 361/438-3413  
[wjohnson4945@sbcglobal.net](mailto:wjohnson4945@sbcglobal.net)  
Tim Smith consultant • 512/587-7896  
[smithgenetics1@gmail.com](mailto:smithgenetics1@gmail.com)  
Follow us on Facebook-Johnson Cattle Company, Kenedy, Texas



# Fall Fest Sale

## An Online Offering on Sept. 15-16th

### [www.DVAuction.com](http://www.DVAuction.com)

For additional information contact:

**Robert Piper - 830/305-4550**

**Jim Carter - 254/697-1078**

**Jim Ethridge - 979/255-2882**



## Simbrah Synergy X set for September 23-24th

Sale host Tim Smith announced that Simbrah Synergy X will be held the fourth weekend of September. The date for the tenth annual event will be the weekend of September 23rd and 24th. It will include a sale, a junior show for qualifying heifers, showmanship and educational contests. For additional information contact Smith at 512/587-7896 or smithgenetics1@gmail.com.

## Simbrah breeders meet in Houston

Simbrah breeders held their annual meeting during activities at the Houston Livestock Show and Rodeo. Simbrah President Wayne Reavis welcomed the crowd and introduced Bill and Jane Travis as recent recipients of the Golden Book Award from the American Simmental Association (ASA) in Denver. Trustees Fred Schuetze and Tim Smith updated breeders on ASA programs, financial information and upcoming events. The group also discussed scheduling a five-year planning meeting in 2017. Wayne Johnson and Sam Hodges were elected to the board positions as two terms expired. Officers elected by the board for the coming year include Reavis, president; Jane Travis, vice-president; Hodges, secretary; and Johnson as treasurer. Committee advisors for the year include Joe Hensgens for activities,

events, booth and hospitality; Johnson for fundraising; Hodges will direct the publication committee; and Travis over growth and development.

## Alamo Group announces fall sale dates

The Alamo City Simbrah Fall Online Sale will be Sept. 18-20 on [www.cattleinmotion.com](http://www.cattleinmotion.com). Sale chairman, Joe B. Rodriguez says show prospects will be featured. Cattle will sell from the Baring, Freasier and La Morra programs. For additional information contact Rodriguez at 210/275-0839.

## For Simbrah news, go online

For additional news, events and updated calendar listings Simbrah breeders and enthusiasts are encouraged to visit [www.simbrahworld.com](http://www.simbrahworld.com). In addition to the news, all issues of the magazine and the annual Simbrah News Commercial Feature are archived on this site. Simbrah World is also very social, check out our Facebook page for posts on a weekly basis. Plus, we have several advertising opportunities for you. Contact Martha at [hollidaco@att.net](mailto:hollidaco@att.net) or call 903/316-8465 for more information.

\*\*\*

## She Can Impact Your Herd



### RFI Razen

Top 20 at the AJSA National Classic  
2016 Division Champion at State Fair  
2017 National Reserve Senior Champion Female  
2017 Superbowl, Austin and Houston Reserve Senior Champion Female

RFI Razen, a daughter of Smith Satisfies and Expressive, who is a member of the Irreplaceable Cow Family can be part of your Simbrah program.

We have embryos for sale from her. We have them sired by RFI Real Deal, the 2014 National Champion Bull and Smith RFI Black Sails. We own Black Sails with Reavis and Smith and we are excited about this three-quarter Steel Force x Smith Priceless son.

**Call us—we'd love to visit with you about these embryos and our program**

Benjamin Hill 956-227-8239  
Tonya Hill 956-566-0442  
[brolacocattle@yahoo.com](mailto:brolacocattle@yahoo.com)



## A POWERFUL ADDITION

We recently purchased Smith Gaston 272D, a powerful young bull. We are excited to campaign him at shows this fall and more importantly put him to work on our Simbrah females.



We added 272D for these reasons:

- Sired by RFI Real Deal, the 2015 ASA National and National in San Antonio Grand Champion Bull
- His dam carried the genetics of Smith Satisfies and Smith Tulipe 1272Z, a member of the Tulipe Cow Family. These are proven, predictable bloodlines in the breed
- He's solid red and polled
- He's ranked in the top 1% of the breed for API and top 2% for TI
- He's loaded with power, mass, and muscle. He's very clean in his lines and strong over his top and correct

**WE ARE EXCITED ABOUT HIS ADDITION TO OUR HERD AND INVITE YOU TO WATCH FOR HIM AT SHOWS THIS FALL AND THEN HIS CALVES!**

# B&M Cattle LLC

Brandon and Mary Hebert  
7500 Harris Road • Bell City, LA 70630  
337/370-8864  
[Brandonhebert60@gmail.com](mailto:Brandonhebert60@gmail.com)





Brody, Tonya, Codie Marie, Lorelai and Benjamin Hill.



Codie Marie Hill is still two years away from official showing, but she's enjoying the pee wee showmanship competitions.

# INVOLVED AND PASSIONATE

By Martha Hollida Garrett

There's been two consistent things since high school for Benjamin and Tonya Hill—agriculture and each other. Today, this young couple and their three children are building a registered Simbrah program, taking an active role in the breed and making a living through diversified agricultural careers. They are passionate about agriculture and feel it's important for their children to understand the industry.

While their story starts as high school sweethearts in the small county of Liberty in deep southeast Texas, they now reside in Linn, Texas, with children, Brody, Lorelai and Codie. They have 35 head of registered Simbrahs, operating under their ranch name, Brolaco Cattle Co. Brolaco is a combination of their children's names.

"Benjamin was a junior and I was a freshman when we met through FFA at Hull Daisetta High School, a small 2A school between Houston and Beaumont. He was already a member of the Texas Junior Simmental/Simbrah Association (TJSSA) and was showing Simmental heifers. I was competing in the leadership contests such as livestock judging, speaking and was on the land judging team that competed at state," recalls Tonya. She said that Benjamin had her showing Simmental heifers before she graduated as valedictorian of her class and that both of them capitalized on Houston Livestock Show and Rodeo Scramble Certificates.

Benjamin was drawn to agriculture long before high school, as his grandfather's commercial cattle herd was just three miles down a backroad from his parent's home. In high school, he would also judge cattle and land, compete on the parliamentary procedure team and was a National FFA Runner-up for Cereal Grain Production Proficiency award.

Both obtained the FFA State Farmer and American Farmer Degrees. They realized early that their involvement in FFA and showing helped prepare them for the "real world." They are adamant that their kids have those leadership experiences offered through 4-H, FFA, TJSSA, and sports.



Benjamin started college at what is now Texas A&M at Kingsville, and would finish his ag economics with farm and ranch management degree at Texas A&M, College Station in 2000. They married in 1999, when Tonya graduated from high school. She studied finance at A&M.

*They are passionate about agriculture and feel it's important for their children to understand the industry*

Upon his college graduation, they, along with baby son, Brody, moved to southern California.

"I took a position as an assistant manager of an irrigated sod farm, which was in the middle of what seemed like a desert covered in tumbleweeds," he said, adding that it was a long way from Texas.

"In retrospect, moving out there was one of the best things we did as a young couple. We both had grown up with extended family very close and when we got out there, all we had was each other, Brody and our jobs," Tonya shared.

About 18 months later, they returned to Texas after Benjamin took a position with the Texas Prison System in Brazoria in their crop division. Two years later, in May of 2004 with another baby in tow (Lorelai), they made the move to the Rio Grande Valley and 13 years later it appears to be very permanent.

At that time, both went to work for a large family-owned citrus company. In fact, it was the largest citrus grower overall and largest, most premier onion producer in the Valley.

Benjamin was involved in the farming side of the business

(Continued on page 16)



Sound, functional, low maintenance cows are the kind you will find in the Brolaco program.



The Hill family made their first Simbrah purchase at a MAS Sale a few years ago and have now built their herd to 35 females. They have incorporated bloodlines from a number of programs.



Lorelai Hill campaigned RFI Razen very successfully to many championships on the state level. This Smith Satisfies daughter is now in embryo transfer for the family operation.



Brody Hill is shown at the halter of a bull purchased from La Muñeca Cattle Co. He carries Red Moves and Power House breeding.



## Passionate...

(Continued from page 15)

and Tonya joined the sales department.

After the family owned company sold to a large corporation, they decided that they wanted something different and something to call their own, which was always a lifelong goal for Benjamin.

That was five years ago and Benjamin, who had been farming some on his own on the side, decided to take the leap and begin his own business. Today, he farms grain sorghum and corn, oversees a custom harvesting crew and has a small custom trucking business. Tonya now works for Amazon Produce Network, a company that specializes in importing mangos and represents a number of growers from several Central and South American countries.

"It was a great opportunity for me, but the tropical division presented me with commodities I had not previously marketed. I work with mangos and limes and oversee the packing and shipping of these crops and I have had to learn the regulations. It's been very challenging, but very rewarding and it's allowed me to work from home, which is huge with all the activities of the kids. I'm accustomed to my phone ringing at all hours with a shipping issue," she shared.

Under Tonya's leadership as regional manager, her team has generated tremendous growth for the company in the sale of mangos and limes over the past few years.

Their youngest daughter, Codie Marie, joined the family in 2010. Not long after that, they acquired their first Simbrah. Brody, then in junior high, wanted to make the move from hogs to cattle. Mom and Dad were also ready for the move to cattle, as they were recalling their show experiences and the leadership contests of the TJSSA.

They attended a MAS Sale and went home with a Simbrah heifer for Brody to show. Now, five years later, they have a herd of 35 Simbrah females and the two oldest kids are showing on a local and state level and competing in a number of leadership contests in 4-H, FFA and TJSSA.

Their purebred and percentage Simbrah herd has the breeding of several programs including La Muneca Cattle Co., Reavis Farms, Smith Genetics and RGV Cattle Co. They have just added Smith RFI Black Sails, a three-quarter son of Steel Force and the highly acclaimed Smith Priceless. They own him in partnership with the Reavis family. They utilize AI as a way to continually improve their herd.

Brolaco also joined MAS three years ago as a way to market some of their genetics and to gain name recognition within the breed.

"We have developed a great friendship with the Rene Vela family and Wayne Reavis. They have been invaluable to our program. Both have provided us with great information and advice and we're looking forward to sharing some genetics in the near future," explained Benjamin.

Their young program has already produced a champion for junior customer Melanie Evans, who purchased a Brolaco bred heifer. She would have twin calves at her side when she claimed the 2016 Fort Worth Junior Simbrah Show Grand Championship.

"We had experienced the junior programs ourselves, but

as we initially looked at breeds for the kids to show, we knew from the get go that SimGenetics was the best route to go for them and that the Simbrah breed was a great fit for our environment," Tonya said.

It wasn't just Brody and Lorelai who got involved, as Codie's days are still two years away, but Benjamin and Tonya. They are not spectators at events, as they can always be found helping do this, do that, organize this, help any and all exhibitors and provide leadership themselves.

In 2013, after attending the summer shows, Tonya loaded up some of the young Simbrah exhibitors from the Rio Grande Valley and brought them to College Station, Texas for three days in August. They attended the Texas A&M Beef Cattle Short Course youth segment as a way to learn more about the beef industry.

Three years ago, Tonya and Benjamin, along with the Bennie Cano and Vela families, spearheaded Cow Camp Palooza, a camp for young exhibitors from the Valley. The goal was to prepare for the TJSSA Futurity American Junior Simbrah Roundup (AJSR) and that year the American Junior National Classic was in Texas.

"We patterned ours after what Tim Smith has done for 25 years with his cow camp and the Freasier family in the Floresville area," she said.

This year the camp drew 30 youth of multiple breeds. The exhibitors received a binder full of cattle terminology, production, nutrition, reproduction and health information, and there were stations for public speaking, livestock judging and skill-a-thon, as well as a showmanship clinic.

This year, Dean Fuchs, AJSR lead advisor asked them to help with fundraising for that event and they gladly accepted the challenge. They are also joining Roundup as advisors for the 2018 event.

They have seen tremendous growth in their children due to participation in SimGenetic contests, as well as the work responsibilities of having cattle and farming.

Brody was the 2016 Animo Award winner, which is presented by the Guerra Family at Roundup, and he serves on the TJSSA Board of Directors. He's a member of the National Honor Society, leads the Linn-San Manuel 4-H Club as president, is the reporter for the Edinburg North FFA Chapter and participates in the Texas Farm Bureau Leadership program. He plays the position of defensive end for his high school football team and is listed on the South Texas Senior Top Watch List in Texas High School Football. He is currently fielding offers to play football at the college level.

Lorelai recently claimed the third high individual honor and belt buckle at the AJSR, serves as treasurer for their 4-H Club, is a member of the Junior National Honor Society and Duke Talent Identification Program. She also enjoys sports and plays volleyball, basketball, golf and track. She will be playing for the South Texas 14U Elite National Volleyball Team this coming year.

Agriculture in general and Simbrah specifically are in need of young families like the Hills. Their love, involvement, commitment and passion for the industry is contagious. They will testify it provides a great backdrop to instill valuable work ethic, character traits and opportunities in their children.



AN

# Outstanding

SET OF SIMMENTAL & SIMBRAH HEIFERS & STEERS

## FOR SALE



*KSSR Southern Lady*

RES CHAMPION SIMBRAH, 2017 STAR OF TX  
RES CALF CHAMPION SIMBRAH, 2017 HLSR  
CLASS CHAMPION, 2017 SAN ANTONIO  
CLASS CHAMPION, 2017 FWSS



*KSSR Rue*

CLASS CHAMPION, 2016 HLSR  
GRAND CHAMPION SIMBRAH PAIR, 2016 TJSSA FUTURITY



*KSSR Diamond*

RES. DIVISION CHAMPION,  
2017 FORT WORTH STOCK SHOW



*KSSR Blue Velvet*

DIVISION CHAMPION, 2016 SAN ANTONIO



*KSSR Crown Royal*

DIV. CHAMPION SIMBRAH, 2015 NATIONAL OPEN SHOW  
DIV CHAMPION, 2015 SAN ANTONIO  
DIV CHAMPION, 2015 SUPER BOWL



*KSSR Cheyenne*

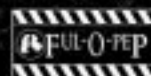
2017 MANY TIME CHAMPION FEMALE



*KSSR Brocade - N- Hearts*

CHAMPION SIMMENTAL  
2015 - 2016 LA STATE FAIR

WE PROUDLY RECOMMEND  
EXCEL BY FUL-O-PREP



Contact us for your next champion!

**KNEZEK SIMMENTAL SIMBRAH RANCH**

BRIAN KNEZEK C: 361-293-1590 • E: KNEZEK@GVEC.NET

WWW.KNEZEKSIMMENTALRANCH.COM





# **THE FUTURE OF THE**

## **High Heterosis, Highly Efficient Lower Production Costs**



**Schedule A Visit. Currently 170 Calves On Ground And A Joy To See**  
**Visit: [www.simbrah.com](http://www.simbrah.com)**  
**Bill and Jane Travis, 214/850-6308**



# WORLD BEEF INDUSTRY

**Tender and Consistent Quality Carcasses  
Warmer Weather Cattle**



PRR Priscilla-the #1 champion show ring winner in the Simbrah breed with 81 belt buckles to her credit. She was a TJLA Simbrah Champion twice. Jamie Vayon showed this Pine Ridge bred female.



PRR Shania-This Pine Ridge Ranch heifer took Hope Onstot to the winner's circle repeatedly, including the reserve grand Simbrah title at the San Antonio Junior Show. She is also the dam of the Onstot's herd sire, Waylon. Shania is now a donor.



Carter McClendon purchased this young heifer from us and she is undefeated in the show ring at this point.



PRR Morning Star-This female also claimed the TJLA Simbrah breed championship for Michelle Honeycutt.



PRR Cherokee 833B, a young PRR sire.

## HOTSSA ONLINE SALE

September 15-16th

[DVAuction.com](http://DVAuction.com)

Pine Ridge selling Pick of Heifer  
and Bull Calf Crop  
Includes potential herd sires,  
donor cows and  
show ring champions

**Pine Ridge Ranch, LLC • [www.simbrah.com](http://www.simbrah.com)**  
*Celebrating 40 Years of Utilizing SimGenetic Cattle*

**TX**





Working with livestock can be a lot like driving on a roundabout.

# Follow The Flow

Animal handling expert shares tips for effectively moving cattle.

By Kindra Gordon

“Stockmanship to me is like a highway roundabout,” says Curt Pate, a well-known livestock handling specialist. He explains that those circular intersections make people think as they navigate through the curves and outlets. Likewise, Pate says, “Stockmanship while working with livestock is kind of a roundabout. You’ve got to think. It’s tough. It’s a skill.”

Regarding the value of stockmanship, Pate notes, “It’s not only about working animals; it’s about understanding animals. You need to be able to look at animals and know if they are content – if they have what they need.”

He adds, “The more you think and work at it and analyze your efforts after you get done working with a group of livestock, the better you’ll become. And, it’ll improve your quality of life and improve our quality of beef.”

## Pressure points

Regarding cattle movement, one of Pate’s fundamental techniques is the use of pressure. He says, “Pressure is what stimulates animals to move,” and uses the analogy of a storm that prompts animals to move forward to seek shelter.

He explains, “It’s all about putting yourself in the right place at the right time with the animals to give the right amount of pressure, and then releasing animals to do what you’ve asked them to do.”

He notes that in some situations, such as moving cattle into a

chute or semi-trailer, more pressure may be needed. He emphasizes that you do not want to panic the animals, but you may need to increase the pressure being applied to keep them moving.

He shares, “When cattle are too gentle, it makes them more difficult to move.” As well, he says, “I’m not against hot shots. I think they are one of the most humane tools we have if they are used properly.”

But he also cautions against too much pressure and putting cattle into a panic mode. He explains that when you are working with an animal, you are working with their brain. He describes the animal’s brain as having two sides: a thinking side and a surviving – or reaction – side.

“Animals use the thinking side in instances like grazing. They are deciding what to do and what to eat,” says Pate.

Conversely, he describes the survival mode as an animal in panic – something really scares them. Signs include the head of the animal rising up, their eyes widening, their tail raising and they are looking to get away.

“In survival mode, they are not thinking, they are reacting. If animals are in survival mode too long and stressed so much, their immune system can shut down,” says Pate.

Recognizing this, Pate says that the first lesson a good stockman learns is to never stress an animal to the point of shifting them into survival mode. “If an animal does reach that point, you’ve got to back the pressure off,” Pate says.

Additionally, Pate points out that animals have an incredible memory. He says, “We’ve got to remember, any negative things we do to animals, they never want to get in that situation again.” Even sound can cause a negative experience that can stress animals. “Bull whips and rabble paddles get animals not to trust us,” Pate

*“It’s all about putting yourself in the right place at the right time with the animals to give the right amount of pressure, and then releasing animals to do what you’ve asked them to do.”*

(Continued on page 29)



# ESTES RANCH

## *Simbrah-Simmental*



*Your new source for Purebred Bulls and Heifers,  
as well as Commercial Simbrah-Angus Heifers*

Our family has been raising cattle in the same location since 1897, come and see what we have been up to over the past 120 years. We started raising Simmental in 1981 and Simbrah in 1985 and think it's about time to start sharing our genetics with everyone else.

### ESTES RANCH

Paul Estes 580-675-2407 home, 940-357-1454 cell  
Dr. Ben Estes, DVM 940-357-1483 cell • [estesfamily@swoi.net](mailto:estesfamily@swoi.net)  
4100 CR 290 Wellington, TX 79095

# She Has The Potential To Move A Program Forward

We're offering this female (and two more) in the upcoming Simbrah Synergy X Sale. This heifer, RFJJ Real Moves, is a daughter of RFI Real Deal and out of black full sister to She Moves. In addition to her proven genotype, she has an impeccable phenotype, balanced EPD profile, capped off with a top10% ranking for API and TI. She sells in the sale as lot 105 and she can move a program forward.



We also want to introduce our new herd sire, Smith RFJJ Established. He's a 3/4 x 1/4 son of Smith Stout N Black and his dam is the 12W cow, who is a member of the Irreplaceable Cow Family. He's red and polled and has a top 1% ranking in the breed for API and top 2% for TI.—Watch for him!



**See you at Synergy  
Sept. 23rd**



Richard and Betsy Foster  
and Richard III  
P.O. Box 88 • Floresville, Texas 78114  
713/412-4487 (Richard III)  
Or 713/412-4480  
[diamondrf@peoplepc.com](mailto:diamondrf@peoplepc.com)

# Let **BAD MEDICINE** Work For You!



**RGV Enigma, a Bad Medicine daughter.**

Congratulations to Ava Vela for all your success with RGV Enigma. Enigma is a Bad Medicine daughter that is extreme in volume and capacity. We look forward to more success with her this upcoming show season! Thank you to all our recent buyers: Armando Reyes, Jacob Saenz, Diego Padilla, Diego Balderas, Tatiana Betancourt, CJ Renteria, Emeri Drewry, Dr. Ramiro Caballero, Dr. Adalberto Garza and Marshall Curl. Also, a huge thanks to Jody Matejcek, from Lost Cause Ranch for purchasing Bad Medicine semen at the Simbrah Roundup. He will work for you!

*For information on Bad Medicine or our cattle, please contact us*

## RGV CATTLE COMPANY

Rene, Gina, Olivia, Ava and Emma Vela

34729 Black Buck Dr. • Edinburg, Texas 78542 • 956-279-2200 • [Rgvrene@aol.com](mailto:Rgvrene@aol.com)





# Here they are... the next generation of **COW POWER!**

We're excited about these young ladies and the potential they hold for the breed.  
We emphasize maternal strength and cow families every day...  
these gals show you why that's important.



**SMITH PERRY PURE JOY 19B ~**  
A daughter of William N Black. Top 1% ranking for API and top 10% for TL. Owned with the Perry Family.



**SMITH BURCH CHEERFUL 643D ~**  
A three-quarter daughter of our Devils Cut sire and out of the Golden Glory Cow. Ranks in the top 10% for API and top 5% for TL.



**SMITH 7N NICE DREAMS 52C ~**  
A polled purebred daughter of Satisfies and she traces back to the 50 Cow. We own her dam with 7N. 52C ranks in the top 3% of the breed for API and top 10% for TL.



**SMITH CRC NU KEEPSAKE 110D ~**  
Chloe Novak owns this next generation of the Keepsake Cow Family. She's a polled purebred daughter of Nu Approach. Ranks in the top 15% for API and 3% for TL.



**SMITH MCCR HONEY MOO 111C ~**  
A polled percentage daughter of Devils Cut and our Moving Up donor, who is a She Moves daughter. A top 2% ranking for API and 4% for TL. We own her with McCrary Farms.



**RFI MISS DEBUTANTE ~**  
This female is writing her own chapter in the Topanga Cow Family as she has Sweet Deb, a National Champion and Dazzlin Deb to her credit. Owned with Reavis Farms. Top 10% ranking for API.



Tim Smith • Joel Isgrig • Haley Smith  
P.O. Box 330 • 1316 PR 2231 • Giddings, Texas 78942  
512/587-7896 • smithgenetics1@gmail.com  
[www.smithgenetics.com](http://www.smithgenetics.com)







# LIVING THE DREAM

We want to thank everyone who has shown an interest, bid or bought progeny off of LMC Daydream, we could not pursue our passion without your support. We wish our customers continued success with your Daydream progeny and look forward to sharing her 2017 - 2018 production with you in the future.

30th Annual LMC Jr.  
Round Up & LMC Futurity  
**OCT. 7TH**

LMC & Friends Giving  
THANKS Online Sale IV  
**NOV. 18-21**

LMC Sellabration & LMC  
Jackpot Weekend  
**MARCH 23-24, 2018**



**LMC SSC MR. JACK** - Be looking for details on this exciting LMC Gold Medal son.



**LMC SSC CATALINA** is a LN LMC 12th Man daughter owned by Garrett Goodson.



**LMC SSC BRENDA** is a LMC Gold Medal daughter owned by Patti Barnett.



**LMC SSC YOLANDA** is a many times champion sired by LN LMC 12th Man owned by Madison Culpepper.



**LMC SSC NINA** is a champion 6G/LMC Rajin Cajon daughter owned by Lorelei Hill.



**LMC SSC MELINDA** is a champion 6G/LMC Rajin Cajon daughter owned by Haley Bryant, who also owns LMC SSC Marla, a full sister.



**LMC SSC GLORIA** is a LMC Gold Medal daughter owned by Carlos "Papa" X. Guerra III.

## LMC DAYDREAM PARTNERS

Cody Scogin Seale Show Cattle  
Victor G. Guerra - vgg03@aol.com  
956.607.5515 - Victor  
936.201.8272 - Joe



**GOLDIE** won the 2017 Houston Junior Simbrah Show on her way to Reserve Champion American Female honors for our partner Robert Stavinske. She is a LMC Gold Medal daughter out of LMC LF Tanya that is now in our embryo transfer program. Tanya is sired by LMC WFC Wave Amigo and out of a Meyer Ranch 734 daughter.



**LMC ELECTRA** is sired by Mr. HOC Broker and out of the LMC Pioneer Woman donor. Congratulations to my niece Mia Ramirez for leading her to Reserve Division II honors at the American Junior Simbrah Roundup at her very first show. Electra was also Reserve Champion Simbrah in Ring C & D at the TAMU Saddle & Sirois.



**LMC VICTORIA** sells in the Outback Ranch Working Cows Online Sale on October 9, 2017 at [www.breedersworld.com](http://www.breedersworld.com). She is sired by the famous Mr. HOC Broker bull and out of LMC Pioneer Woman, a direct LMC WFC Ms. Dream Girl daughter. Sells halter broke and eligible for the La Muñeca Junior Program. Consigned by Flonaca.



**ADELLA** is a champion 3/4 Simmental x 1/4 Brahman heifer sired by Rolling Hills Endeavor and out of LMC LF Tanya as well. Congratulations to Robert Stavinske on leading her to Reserve Champion Percentage Female honors at the American Junior Simbrah Roundup and Grand Champion at the \$15,000 MAS Showdown. **ELITE COW FAMILY IN THE MAKING!**



**LMC BBS FAO DIANA** topped the LMC GenePLUS XVII Online Sale. We appreciate Morgan Culpepper adding this LMC Upgraded heifer out of LMC BBS Jeana to her elite show string. Diana is a maternal sister to the up and coming LMC Chairman bull.



Since 1873  
Victor G. Guerra  
P.O. Box 92  
Linn, TX 78563  
956.607.5515  
vgg03@aol.com



Flonaca appreciates Miranda Carrero purchasing **LMC LF GRACIE** in the LMC GenePLUS XVII Online Sale. She is a LMC Rhino daughter and is a maternal sister to the legendary LMC EF JW Black bull. A BIG HEARTY THANKS to Carlos "Papa" X. Guerra III as well for purchasing her full brother.





# MAS Showcase



**June 24**  
**Crescent, Texas**  
**Judge Darrell Pitchford**

Sponsors 5W, 6G, BETM, La Morra, La Muneca, La Negra, LPJ, Monte Christo, RGV, Reavis Farms, Smith Genetics, Top C and Brolaco.

Amelia Stavinoha exhibited the MAS Calf Champion. Sponsored by 6G Ranch and sired by LMC Gold Medal.

Jake Williams exhibited the MAS Reserve Calf Champion. She is sired by

LMC 6G Red Rock 5Y/203. Sponsored by La Muneca.

MacKenzie Groce exhibited the Reserve Junior Champion at MAS. She is a daughter of LMC Gold Medal 5Z/75 and sponsored by La Muneca.

Jane Hunt exhibited the Reserve Senior Champion Female at MAS. She was sponsored by Reavis Farms and Smith Genetics.

She is sired by RFI Real Deal.

Jane Hunt exhibited the Reserve Grand Bull at MAS. He is sired by LMC Arcadio 5X/116 and sponsored by La Muneca.

Hallie Hackett exhibited the MAS Reserve Champion Percentage female. She was sponsored by Smith Genetics and is a Devils Cut daughter.



Mandi Lee exhibited the Junior Champion at MAS. She went on to be named the Grand Champion and winner of the \$2,500. She is a daughter of LMC Gold Medal 5Z/75 and sponsored by La Muneca.



Robert Stavinoha exhibited the MAS Champion Percentage Female. She is a daughter of Rolling Hill Endeavor. She was sponsored by La Muneca.



13-14 Years-Old Showmanship winners (L to R, 1st-10th): Madison Culpepper, Lorelai Hill, Mia Barba, Leah Thibodeaux, Robert Stavinoha, Barrett Novak, Natalie Martinez, Gabie Herpin, Trevor Jenkins, Luke Dorat.



Jennifer Mask exhibited the Senior Champion and Reserve Grand Female at MAS. She received \$1,500. The heifer was sponsored by La Muneca and sired by LMC Gold Medal 5Z/75.



8-10 Years-Old Showmanship winners (L to R, 1st-10th): Carlos X Guerra III, Ryan Pena, Harper Mau, Gavin Hinckley, Matthew Sanchez, Jennifer Mask, Mia Ramirez, Xavier Martinez, Emme Dees, Rory Die.



15-16 Years-Old Showmanship winners (L to R, 1st-9th): Hannah Wells, Amelia Stavinoha, Jaden Butler, Jacob Friedrich, Brittany Koehl, Cole Mau, Cameron Young, Caleb Richardson, Dalton Schmidt.



Graceann Mullins exhibited the Grand Champion Purebred bull at MAS. He is sired by LMC Justice 5Y/121 and sponsored by La Muneca.



11-12 Years-Old Showmanship winners (L to R, 1st-10th): MacKenzie Groce, Ava Vela, Jake Williams, Hallie Hackett, Cooper Mau, Haley Bryand, Ryleigh Whitaker, Makayla Sanchez, Gabi Ramirez, Grant Hinckley.



17-18 Years-Old Showmanship winners (L to R, 1st-11th): Hunter Wells, Mandi Lee, Winston Walters, Hayden Hackett, Alexander Garrison, Jane Hunt, Graceann Mullins, Trevor Jenkins, Brody Hill, Caitlyn Miller, Callie McGinley.





# Balancing mineral needs

By Travis Meeter, University of Illinois Extension

Have you ever watched a person walk a tight rope? The balance and precision that it takes to make it from one side to the other is incredible. Focus and attention must be combined with talent and practice. If any small thing goes wrong... balance can be lost and the goal of making it across is gone.

Mineral nutrition is a balancing act, too. It is very delicate and much more fragile than other nutrition tasks, such as meeting protein and energy requirements. Minerals must be provided to the animal in a BALANCE. When min-

erals are not balanced, problems can arise. Low levels can lead to deficiency. High levels can lead to toxicity. Matter of fact, high levels of one mineral can cause a deficiency in another.

## Sources of minerals in the diet

Minerals enter the animal primarily through feed, water, and supplementation. While it is easy to understand that your mineral feeder full of mineral supplement is a source of mineral, many times cattlemen ignore the minerals that are available to an animal in the feed and water.

In order to better understand what minerals your cattle are ingesting, you should test your feedstuffs and even your water source. If you are certain mineral imbalances are affecting your herd, you can discuss this with your local veterinarian and they can draw blood or take liver biopsy samples to identify mineral deficiencies.

## Mineral interactions

I personally believe this is a problem in many cattle rations and many times is holding cow performance back. Producers that are trying to push performance higher need to take a look at what may be causing mineral interactions in their cattle diets.

Mineral interactions can result in one mineral restricting the bioavailability of another. Thus, reducing the amount of that mineral absorbed by the animal. This can lead to deficiency. Another way to put this is an excess can cause a deficiency.

One of the most common mineral interactions in beef cattle is the interaction between calcium and phosphorus. Generally, calcium and phosphorus levels are recommended in a ratio (Ca:P). Ideally, a ratio of 2:1 is targeted. Cattle can handle slightly lower Ca:P ratios, however when the ratio becomes inverted, or more phosphorus is provided than calcium, steer cattle can be at risk of urinary calculi (also known as water belly). A prolonged period with a Ca:P imbalance in young cattle can interfere with bone growth and decrease overall performance.

Certainly the Ca:P ratio is important to monitor. Many corn by-product feeds are high in P. In cases of high levels of Ca and P in the diet, other mineral requirements for magnesium, manganese, iodine, sulfur, iron, and zinc will all increase. Remember the key to proper mineral nutrition... balance.

The relationship between copper, iron, molybdenum, sulfur, and zinc is another crucial mineral interaction. These minerals can all influence the bioavailability of each other. High levels of zinc, iron, molybdenum, or sulfur can all interfere with copper availability. Copper deficiency is one of the most common mineral problems across the country.

Do you have hard water? Are your cornstalk bales dirty? Did your hay field

(Continued on page 28)



**Stage 1  
of calving**



**Stage 2  
of calving**



**Stage 3  
of calving**



# Recognizing the stages of calving

By Lindsay Allen

There are many factors to determining the profitability of a cow; her phenotype, genetic make up, environment and much more, but at the end of the day, if there is no live calf on the ground, the former isn't worth much. When it comes to dystocia and assisting in a difficult labor, it is important to be aware of the process and how to help, in addition to knowing when to call for help, to help ensure a live calf and healthy mama cow.

Labor can be broken into three stages, with stage one possibly lasting as long as 24 hours. "The biggest thing happening in stage one is the dilation of the cervix and while we can't witness that taking place, there are behavioral changes we can look for and observe," Dr. Glenn Selk, Emeritus Extension animal scientist at Oklahoma State University, said.

"When calving gets close, the female will normally move away from the herd to look for a place to calve; often in a pen of calving heifers she can be found in a corner. In the pasture, she is often under a tree or deep in the brush. If calving difficulty is anticipated, females need to be moved to an easily accessible area for observation and, if necessary, for assistance. The calving female may lie down and then get up; she will move around and perhaps frequently look at her side as contractions occur," added

Dr. Joe Paschal, professor and Extension livestock specialist with Texas A&M AgriLife Extension.

Selk noted that it can be tricky to observe cows in stage one as some will express these behavioral changes, like kicking at their stomach, pacing the fence line and isolating themselves, but not all will. "The udder dropping and filling out is a good sign of labor to come, but the time frame estimation after this happens is not reliable. Calving could be anywhere from two weeks to two hours after the udder and teats descend," Selk said.

Heifers will usually exhibit more signs and for a longer period than cows, especially cows that have had several calves. "As the cervix dilates and uterus contracts, the first and largest water bag, the allantochorion ruptures. In about half of calvings it pushes through to the opening past the vulva and is seen as a dark amber bag, full of gallons of amber or straw colored fluid. This is followed by the amnion, a white sac filled with clear fluid," Paschal said. Birth normally occurs within 30 minutes to four hours after the appearance of the amnion or the front feet of the calf. "Any disturbance of the cow (movement to a pen or chute) at this point can delay the process by reducing contractions and increasing the time required for delivery. It also reduces the chances for a live calf. If the calving female is to be moved for observation or assistance, do it early," Paschal recommended.



During this first stage, the body of the cow is preparing for labor; the ligaments of the pelvic region are relaxing and allowing the area to expand, producers might notice a sunken look around the hooks to pins region and may notice mucus from the cervical plug leaving the body. All signs that stage two, where actual birthing happens, is approaching.

"How long stage two will last is the multi-million dollar question. Producers want to know when a cow needs help and how long they should wait before calling help. This is when I get my watch out and pay attention to the clock," Selk said.

Research shows that, on average, a heifer will remain in stage two for right at 55 minutes and cows will complete stage two in about 23 minutes. Obviously, there are calvings that last shorter or longer of these averages, but using these as a rule of thumb can help cattlemen gage the progress.

"As I'm watching a female and she passes the half hour or one hour mark, but her labor is progressing, I don't get too worried and I let Mother Nature continue its course; it's when no progress is being made after an hour that I would start calling a neighbor, teenage son or vet to possibly be on hand," Selk commented.

Paschal said it is important to be ready to assist the cow, but not speed up the process. "The calf can survive a lengthy calving process since the placenta has many sites of attachment to the cow's uterus and can supply the calf with oxygen and nutrients for several hours. Allowing the cow to progress at her own pace also allows for the cervix to fully dilate, reducing the risk of tearing the uterus or injuring the cervix. However, the amnion or calf's feet should appear within 2 hours of the beginning of this stage," he said.

When stage two is complete, the calf will be on the ground. To get to this point, cowmen may find themselves in a position where assistance is required. While there is no way to guess what issues may arise in the future for every operation, there are some signs that are signals for help in stage two.

"If you have the skills to examine a birthing cow, remember that sanitation and lubricants are musts. Do not use soap as a lubricant, but OB lube, mineral oil or vegetable oil with an OB glove. When you are examining a cow, you should be checking for a dilated cervix, a live calf (by sticking a finger in the mouth or anus of the calf), the presentation (head or tail first), position (right side up or down) and posture (head between the front feet or a head back, etc.)." Paschal continued, "From here you can tell if assistance will be needed or not based on your findings and awareness of your own skill set."

While time is of the essence, it can also be dangerous to try and assist without the proper knowledge and training. If you are capable of providing assistance, you want to make sure the cervix is dilated and ready for the calf to deliver.

If you find that calf is coming backwards, timing is very important. "When you have pulled a calf far enough that the tail head is visible, you need to have an understanding of the umbilical cord which is the calf's source of oxygen. Once you have pulled the calf far enough and either pinched the umbilical cord or pinched it off completely, the calf will be unable to receive oxygen because the nose is still in the fluids. This means you have four minutes, on average, to get the calf on

the ground and clear it's nose to allow it to breathe," Selk said.

At times, a calf may need to be moved or rotated to help it pass through the pelvic area, but again, this should only be done with a clear understanding of the process to prevent damage to the cow. "If the calf has really big hips or the heifer has given up, the widest part of the pelvic opening is on the diagonal, therefore rotating the calf 45 degrees to the left or right will place the hips at the widest part of the pelvis." Paschal continued, "A breech presentation is one where the calf's back or belly faces the opening, like a log across it. The calf has to be pushed back in and then moved into a head or tail first position."

Calves that have been born with assistance need to be checked to make sure they are breathing normally, have no fractures in their legs from incorrect placement of chains or the use of extreme force in pulling and that they can stand within an hour of birth and nurse, added Paschal. "Sometimes it is beneficial to take a dry towel and clean and dry them off while the cow is recovering. Vigorous drying can increase blood flow to the calf and its extremities," he said.

Selk recommends tickling the calf's nose with a stiff straw if it's not breathing, to cause it to sneeze and/or cough and use the diaphragm and lung muscles. "You want to clear the mouth and nose of mucus and I always tell cattlemen to be very cautious about hanging a calf over a pipe rail fence, thinking that they are draining mucus by hanging the newborn by its flank for a few minutes," he said. "It's counterproductive as most fluids are in the stomach area and when you hang them like that, you are pinching the diaphragm and keeping the calf from doing the very thing you want him to do--which is to use those muscles. You want the calf to pant and have rapid breathing, this is a natural reaction to intake more oxygen and rid the excess carbon dioxide and allow the blood oxygen level to return to normal."

The final stage of labor, stage three, is the expulsion of the "afterbirth," composed of the fetal membranes, placenta and remains of the water sacs. If the afterbirth is not passed within eight hours after delivery, a veterinarian should be consulted for treatment, Paschal noted. Selk added that while there maybe a temptation to manually pull the afterbirth if it is partially hanging out, this could cause damage to the uterine lining and again, a veterinarian should be brought in to possibly provide a prostaglandin to help pass the afterbirth.

When it comes to reducing calving difficulty, sire selection is the number one predetermining factor. While some believe that feeding cattle too much during gestation could lead to issues, research proves that there are more issues with underfed cattle during labor as they fatigue sooner, birth a weaker calf, do not provide as much or as high of quality of colostrum and rebreed at a slower rate.

Having awareness and knowledge of the calving process can help you, as a producer, know when to step in and help and when to call a veterinarian, in the event that help is needed.

\*\*\*



**FORT WORTH  
STOCK SHOW  
& RODEO**

**JAN. 12** **FEB. 3**

**BUCKEYE STEERS**

*National*  
**SIMMENTAL SHOW**  
**JANUARY 28**  
**PUREBRED, PERCENTAGE & SIMBRAH DIVISIONS**

*Junior*  
**SIMMENTAL &  
SIMBRAH SHOW**  
**JANUARY 22**

**ENTRY DEADLINE:  
NOVEMBER 15, 2017**

Call or click for official entry applications, premium lists, rodeo tickets and other information.  
**817.877.2400 • FWSSR.COM**

*Rodeo Performances*

**BEST OF THE WEST RANCH RODEO**  
JAN. 12 @ 13, 7:30 pm

A part of Ranching Heritage Weekend presented by Western Horseman

**BEST OF MEXICO CELEBRACIÓN**  
JAN. 14, 7:30 pm

presented by State Farm & Telemundo 39

**COWBOYS OF COLOR RODEO**  
JAN. 15, 2 pm

presented by State Farm & Telemundo 39

**BULLS' NIGHT OUT**  
JAN. 18 @ 17, 7:30 pm

presented by PlainsCapital Bank

**FORT WORTH SUPER SHOOTOUT**  
JAN. 18, 7:30 pm

presented by Schaefer - America's Finest Racewear

**WORLD'S ORIGINAL  
INDOOR RODEO**  
JAN. 18 - FEB. 3,  
10 am, 2 pm @ 7:30 pm

*This Thing is Legendary®*



North Texas  
Chevy Dealers



WILL ROGERS MEMORIAL CENTER • FORT WORTH, TEXAS • FWSSR.COM

## Mineral needs...

(Continued from page 25)

get flooded before you cut and baled it? These are all likely suspects for more iron in your cattle rations. Iron is really good at reducing the availability of crucial trace minerals.

Are you feeding distillers grains or CCDS? These feed-stuffs are higher in sulfur. High sulfur levels in the ratio will bind trace minerals, especially copper. Cows that suddenly have red tinged hair coats are likely experiencing copper deficiency.

Selenium deficiency is a problem in Illinois. Selenium and Vitamin E are generally used in conjunction to supplement against Se deficiency. This is because both Se and Vitamin E work along the same lines in the body to prevent hydroperoxides. Administering Se and Vitamin E together is a good supplementation strategy to combat Se deficiency.

### Solutions and summary

Producers can utilize minerals that incorporate organic forms or chelates to help resolve major issues with mineral interactions. Injectable minerals are also a potential solution. However, the key is to know what is deficient and how that deficiency is occurring. Your vet will be able to test for deficiencies. Getting rid of an excess will be much more economical than purchasing expensive minerals.

When formulating your mineral nutrition program it is crucial that you are aware of these mineral interactions. Understand that feeds and water can be playing a major role in mineral nutrition of your cattle. Excess can cause deficiency.

## Banner Winning Bulls

**MAKE THEM PART OF YOUR PROGRAM**

Diamond E Cattle Co. is proud to have exhibited the Reserve Grand Champion Simmental Bull and the National Senior Champion Simbrah Bull at the 2017 San Antonio Livestock Show.



**MR CFBAR ACE** 2017 San Antonio Reserve Grand Champion Simmental Bull. Sired by Combustible, a Steel Force son, with Star Power and Knezek breeding maternally. Black, Polled Purebred Simmental.



**KSSR COWBOY CRUSH** 2017 National Senior Champion Simbrah Bull. Sired by RSUN Cowboy Casanova and out of Knezek's famous Glamour cow. Red, Polled Purebred Simbrah.

**NOW  
OFFERING SEMEN  
ON BOTH BULLS.**




**PLEASE CONTACT US  
FOR PRICING AND  
DETAILS.**

Ron & Linda Eilers 979/530-8069  
1641 Spring Creek Rd., Brenham, TX 77833  
ronelers11259@gmail.com

Dustin & Shelley Dippel 979/251-1810  
1336 Lakesview Rd., Fayetteville, TX 78940  
shelley.dippel@gmail.com


**DIAMOND E CATTLE CO.**





**Smith GENETICS**  
KENTUCKY DIVISION  
Quarter Horses, Simmental and Simbrah Cattle

Jason Smith, Aimee & Andy Nienaber, Lisa & Nathan Naive, William & Beth Smith  
For information contact Tim Smith, smithgenetics1@gmail.com • 512/587-7896



**Smith Andy N Black**

## LAZY SF RANCH

6899 Rossignol Road  
Bell City, LA 70630

Doug Schultz • 337.540.8901  
Craig Schultz • 337.802.2173  
Email: lazysfranch@live.com



## HODGES CATTLE COMPANY

Sam Hodges  
1311 Goliad St. • Houston, TX 77007  
903/701-7929  
SamHodges90@gmail.com

**SIMMENTAL & SIMBRAH  
BULLS & FEMALES**

*Featuring the influence of WHF Devils Cut*



## JV Cattle Co.

Jeff, Janet and Jamie Vayon  
P.O. Box 1131 • Winnie, Texas 77665  
Jeff: 409/201-3146 • Janet: 409/656-2874  
jvayon@chamberstx.gov

## Follow the flow...

(Continued from page 20)

says.

### Vision important

What's the most common mistake livestock handlers make? Pate says it is when people walk behind the animal (or the herd) and try to push them forward. He blames society for this approach, saying, "Society makes people get in line. It's programmed into our brains to get in the back of the line and then move forward. So, when we work livestock, we do the exact same thing."

But, once you recognize that cattle's range of vision is different than humans, you will quickly realize that walking behind the animal is the wrong approach, says Pate.

He explains that because animals' eyes are on the side of their head, they can see a wide area – almost 360 degrees when their head is down for grazing. But, their vision is not very precise. As a result, when a person approaches, the animal will turn its head to look. Pate says, "As you come up to the center of the animal's eye, you are more in focus to them. But when the animal turns its head, it also must change its direction."

Thus, Pate's rule for handling cattle is to place yourself where the animal can always see you. He says, "I don't try to work the whole animal; I try to work the animal's nose."

He explains that where the animal's nose points toward, the rest of the body usually follows. "If you can always see that nose, the animal can see you," says Pate.

Pate likes to work at a 45 degree angle from the front of the animal. He calls this the focus point (another industry term is balance point), saying, "That's when they start listening to you." For each animal and depending on the environment, the focus point can be different.

He gives the example of sorting cattle, and explains, once the animal sees you with both eyes, as you step forward, the animal will begin to move. If you step back, they'll stop – or, if you move out of their focus point and they must turn their head to see you better, they will turn away.

Pate adds, "If the animal starts to move the wrong way, you must stop and step back and start over. Then move forward where she can see you better."

As the animal begins to move forward in the desired direction, walk with them, says Pate - but not from behind. Instead, walk along their side in a zig-zag pattern like a border collie.

If the animal is not moving in the right direction, he reiterates, "Always be willing to stop and start again."

### Mood matters

As a final tip, Curt Pate emphasizes that the mood of the people working the cattle can influence their movement and reactions. He says, "I believe cattle can read people better than we can read them."

He tells the story of a producer who was mad while sorting cattle and the cattle would not go by him. Pate says, "Fear, anger, whatever it is that is affecting your mood, cattle pick up on that. So it is real important to keep your attitude right while working with livestock."



# Bull Power + Maternal History = "The 6G Kind"



**6G Rapunzel**

6G Rapunzel is a dynamite spring born, LMC Gold Medal daughter that won Amelia the calf division at AJSR. This female traces back to LMC Blueberry that was a Superbowl Champion heifer for her cousin, Jordan. She epitomizes the cow power that we strive to achieve at 6G Ranch.



**LMC 6G Shiny Gold**

LMC 6G Shiny Gold is a spring born heifer that the Jedlicka Family will campaign this fall and next spring. She is a maternal sister to the Mullins' Champion Bull, 6G Golden Boy! This LMC Gold Medal daughter may be the deepest and thickest heifer we have ever raised at 6G. Look for this female to make waves this spring at the shows.



**6G Gold Standard**

Could he be the next big thing in the Simbrah breed? He is bred to be successful! His sire is the champion, LMC Gold Medal, and his dam won Houston for Camille. 6G Gold Standard has been one of our more consistent producers already putting two heifers in the winner's circle, and her newest, spring born is definitely a herd sire prospect!



**6G Adella**

6G Adella is proof of our continuing desire to advance the Simbrah breed. Robert's Champion Percentage Heifer and MAS and Reserve Percentage at AJSR is sired by Rolling Hills Endeavor and out of his LMC Tanya cow. This female adds new genetics in a tremendous phenotype. Look for her in the future!



**6G Ms Rancher E708**

We still have a great selection of show heifers available at the ranch including this 1st generation power house. This February heifer is sired by our JF Rancher son and out of a 1/4 x 3/4 cow from La Muneca. Do not hesitate to call and take a trip to look at the gems we still have available.



Many thanks to the Davis Family for selecting this dynamite percentage calf as a steer prospect for Houston. He is loaded with muscle, bone and eye appeal! This guy could make some real noise at the majors this spring!

## IF YOU NEED SIMBRAHS — COME SEE US



**Fred & Sharon Grahmann**

Rock Island, TX 77470

Eagle Lake Location: 125 Arrow Road • Eagle Lake, TX 77434

Home: (979) 234-3967

Fred: (979) 758-2178 • Michael: (361) 772-0188 • Leroy: (979) 758-4671

Email us at: msgrah71@yahoo.com







# RIO GRANDE VALLEY

## THE BIRTHPLACE AND CAPITAL OF SIMBRAH

The RGV is the source for the most Simbrah cattle in the USA within one hour of each other. RGV breeders are here to serve all of your female and bull needs whether it be one or a truckload. If we don't have it, we can sure help you find it and have a good time doing so. Many of Simbrah's leaders are from the RGV – from the late Bud Wentz helping start the breed in the late 60's to La Muñeca starting their annual Jr. Educational Round ups in the late 80's to the first Simbrah steer show in the early 90's and MAS in the early 2000's, you can count on RGV breeders to **MAKE THINGS HAPPEN** for Simbrah.



We are proud that this Smith McCrary Fireball daughter that we sold in the Houston was the second highest selling lot in the 2017 International Sale in Houston. Come see us at Monte Cristo.



This fancy Smith Detonator daughter sells in Synergy. Her pedigree is loaded with breed greats. She qualifies for the Synergy Showcase and the Superbowl. Come see us at 7N Ranch.



Vela Cattle Co. is proud to add LMC Rosie 5D-169 to our herd. She offers NEW BLOOD to Simbrah being sired by Mr. HOC Broker & a daughter of +LMC LF Ambassador & the famous Dream Girl.

• 7N Ranch-Donna  
Neschwitz Family  
956-483-8002  
pyneschwitz@sbglobal.net

• Brolaco Cattle Co.-Linn  
Benjamin & Tonya Hill Family  
956/227-8239  
brolacocattle@yahoo.com

• KQ Cattle - Linn  
Pepe Guerra/Sam Correa  
956/330-5408 or 956-4519  
sobagg83@yahoo.com

• La Hacienda Hinojosa-Edinburg  
The Lucas Hinojosa Family  
956/381-8933  
LHH Ranch1954@aol.com

• La Muñeca Cattle Co.-Linn  
Carlos X. Guerra Family  
956/383-7566 or 802-1641  
www.lamuñecacattle.com

• La Negra Cattle Co.-Edinburg  
Javier Moreno Family  
956/607-7408  
javierlnc@aol.com

• LPJ Ranch-Linn  
Luis Flores Jr. Family  
956/457-0205  
Louie@chonzosanmanuel.com

• Monte Cristo Cattle Co.-Edinburg  
Jud and Margie Flowers  
956/207-2037  
judl@onestandhus.com

• Reavis Farms, Inc.-Mission  
Randy Reavis Family  
956/565-8831  
www.reavisfarms.com

• RGV Cattle Company-Edinburg  
Rene Vela Family  
956/279-2000  
rgvrene@aol.com

• Top C Cattle Co.-Pharr  
Benny Cano Family  
956/499-5129  
topccattle@gmail.com

• Vela Cattle Co. - Edinburg  
Aaron I. Vela  
956/279-8901  
aaron@velacow.com



Please make plans to attend and support (A) Synergy Sale & Show September 23-24, (B) 30th Annual LMC Jr. Round Up & LMC Futurity - Oct. 7th, (C) LMC & Friends Giving THANKS Online Sale IV - Nov. 18-24 and (D) LMC Sellabration & LMC Jackpot Weekend March 23-24, 2018.

## IT IS WELL WORTH THE TRIP !!



Brolaco is proud to add LMC SSC Nina to our elite herd. She is sired by 6G LMC Rajin Cajun and the champion LMC Daydream. Come see us when in South Texas. **THANKS** to all of our buyers!!



Check out LMC LN Polled Pappo, our double smooth polled Champion Red Brahman bull to add State of the Art Brahman genetics to Simbrah's gene pool. Semen to be available this fall.



LMC SCC Gloria is a LMC Gold Medal x LMC Daydream unique line bred mating (full brother x full sister) and future donor for LMC bred by Joe Seale, Cody Scogin and Victor. Come see us.



## SHALLOW WATER RANCH

*Your Leading Source for Black Simbrah Cattle - Since 1993*

REGISTERED BLACK SIMBRAH BULLS FOR SALE

SW2



SW2

Bobby & Jeanne  
Thornhill  
21501 CR 496  
Rising Star, TX 76471

SWR Black Chief  
Homozygous black, purebred Simbrah.

Ranch  
254-643-6715  
Cell  
325-647-4030

## STARTING WITH THE BEST



*We have the influence of Priceless in our young program.*

## BURESH CATTLE

Bob Buresh  
5152 Loma Alta Drive • Frisco, Texas 75035  
For information contact our consultant,  
Tim Smith, 512/587-7896

## KATHY HUTTO & JEFFREY REED

9660 FM 713  
Dale, Texas 78616  
512/507-5718



Featuring Sargeant  
daughters

Embryos for sale sired by Charismatic  
**Simmental and Simbrah**

For cattle information contact Tim Smith, 512/587-7896

## RAFTER M CATTLE



RAFTER M CATTLE

Joe, Julie and Jennifer Mask  
P.O. Box 613 • Franklin, Texas 77856  
Phone: 979/559-2016 • Email: raftermcattle@gmail.com



## SIMBRAH CATTLE LITTLEFOOT CATTLE COMPANY

Doug, Karen, Daniel and Kevin Lightfoot

4410 Meyer Road • Needville, Texas 77461  
Home: 979/793-3482 • Cell: 832/473-0671  
[dlittlefoot@yahoo.com](mailto:dlittlefoot@yahoo.com) • [www.Littlefootcattle.com](http://www.Littlefootcattle.com)

## Ronnie Reeves

9660 FM 713  
Dale, Texas 78616  
512/507-5719  
[rrtranspo@yahoo.com](mailto:rrtranspo@yahoo.com)

**BOVINE  
ELITE, LLC**

- \* Semen & Embryo Sales
- \* A.I. & ET Equipment Sales
- \* MVE & Taylor Wharton Tanks
- \* A.I./Palpation Clinics
- \* TruTest Scales
- \* Professional Exporting & Importing
- \* Semen & Embryo Warehousing
- \* A.I. Consultation

### Bovine Elite, LLC

3300 Longmire Drive • College Station, Texas 77845  
800-786-4066 • 979-693-0388 • 979-693-7994 Fax  
[carl@bovine-elite.com](mailto:carl@bovine-elite.com) • [www.bovine-elite.com](http://www.bovine-elite.com)

## LOST CAUSE RANCH

Jody Matejicek  
7189 CR 180 • Anderson, Texas 77830  
979/224-3121 (c)  
[lostcauseranch@yahoo.com](mailto:lostcauseranch@yahoo.com)



**Terry Reagan**  
Auctioneer

210-414-4411

215 W. Bandera Rd., Ste. 114-624  
Boerne, Texas 78006  
[rancherspub@gmail.com](mailto:rancherspub@gmail.com)

## RND Cattle Services

Roberto N. Davila  
Semen, Embryos, Custom AI Services  
International Live Cattle Marketing  
P.O. Box 2133 • College Station, Texas 77841  
(956) 975-9050 • [rndcattle@gmail.com](mailto:rndcattle@gmail.com) • Se habla español





- September 16-Heart of Texas Simmental/Simbrah Association Online Sale
- September 17-20-ASA Fall Focus, Bismarck, North Dakota
- September 23-24-Simbrah Synergy X Sale and Showcase, Giddings, Texas
- October 7-30th Annual La Muneca Jr. Round Up & Futurity, Linn, Texas
- November 18-21-LMC & Friends Giving THANKS Online Sale IV

## 2018 Dates—Some Show dates are tentative, please check respective websites

- January 22 -Fort Worth Livestock Show Junior Simbrah Show, Fort Worth, Texas
- January 28-Fort Worth Livestock Show Open Simbrah Show, Fort Worth, Texas
- February 12-National Simbrah and National Simbrah Percentage Show, San Antonio Livestock Show, San Antonio, Texas
- February 14-Simmental-Simbrah Superbowl, San Antonio, Texas.
- February 15-16-San Antonio Junior Breeding Heifer Shows, San Antonio, Texas
- February 28-International Simbrah Show, Houston Livestock Show, Houston, Texas
- March 8-11-Houston Livestock Show Junior Breeding Heifer Shows, Houston, Texas
- March 8-18-Rio Grande Valley Livestock Show, Mercedes, Texas
- March 22-24-Star of Texas Junior Breeding Heifer Shows, Austin, Texas
- March 23-La Muneca Cattle Co. Jackpot, Linn, Texas
- March 24-La Muneca Cattle Co. \$ellabration, Linn, Texas

## Index To Advertisers

6G Cattle Co. ....	30	Knezek Simmental/Simbrah .....	17
7N Ranch .....	31, 2	La Hacienda Hinojosa .....	31
Alamo City Group.....	6	La Morra Ranch .....	6
B&M Cattle .....	13	La Muneca Cattle Co. ....	31, 36
Baring Cattle Co.....	6,34	La Negra Cattle Co. ....	31
Bovine Elite.....	32	Lazy SF .....	29
Burch Farms .....	9	Littlefoot Cattle Co. ....	32
Brolaco Cattle Co. ....	13, 31	Lost Cause Ranch .....	32
Buresh Cattle Co.....	32	LPJ Ranch .....	31
Daydream Group .....	23	McCrary Farms .....	11
Diamond E Cattle Co. ....	28	Monte Christo Ranch.....	3, 5, 31
Diamond RF Cattle Co. ....	21	Pine Ridge Ranch .....	18, 19
Estess Ranch .....	21	Reagan, Terry .....	32
Fort Worth Livestock Show .....	28	Reavis Farms .....	31, 35
Freasier Ranch .....	6	Reed, Jeffrey .....	32
Floneca .....	23	Reeves, Ronnie .....	32
Guerra, Victor .....	23	RGV Cattle Co. ....	21, 31
Hallak Ranch .....	5	Rio Grande Valley Breeders.....	31
Heart of Texas Association .....	12	Shallow Water Ranch .....	29
Hodges Cattle Co. ....	29	Smith Genetics .....	4, 7, 22
Hutto, Kathy.....	32	Smith Kentucky.....	32
KQ Cattle Co. ....	31	Strack Farms .....	10
Johnson Cattle Co. ....	12	Temperance Livestock.....	9
JV Cattle Co. ....	29	Top C Cattle Co. ....	31
		Triple J Ranch .....	8
		Vela Cattle Co. ....	31

Simbrah World is an 8 1/2 x 11 publication, produced by Southern Livestock Publishing and provides news for and about the Simbrah breed.

## Space Rates:

Size:	B&W:	1 Extra Color:	4/Color:
Full Page	\$725.00	\$875.00	\$1,100
2/3 Page	575.00	725.00	950.00
1/2 Page	440.00	590.00	815.00
1/3 Page	350.00	500.00	725.00
1/4 Page	220.00	370.00	595.00

## Deadlines for Publications

Spring Issue-February 1st  
Fall Issue-September 1st

## COPY AND CONTRACT REGULATIONS

Advertisers and advertising agencies assume liability for all content of advertisements printed, and also assume liability for any claims arising from any such advertisements made against the publisher. The publisher reserves the right to reject advertising, which is felt unsuitable for publication.

## EDITORIAL POLICY

Opinions expressed are the writer's and not necessarily those of Simbrah World.

## LAYOUTS AND PROOFS

Although every effort will be made to provide proofs to advertisers on all ads, we only guarantee proofs on ads that arrive in the Southern Livestock Publishing office prior to or on deadline.

## Simbrah Publications Committee

Bill Travis, Carlos Guerra, Tim Smith, Trey Baring, Cody Witzkoski, Craig Schultz, Doug Schultz and Richard Foster.

## Southern Livestock Publishing, Inc.

### Mailing Address:

P.O. Box 791364 • San Antonio, TX 78279-1364

### Office Located:

407 Breesport • San Antonio, TX 78216

Phone: 210/524-9697

Fax: 210/524-9690

E-mail: [slivestock@southernlivestock.com](mailto:slivestock@southernlivestock.com)

# DRIVEN TO SUCCEED.....



BCC Power Driver  
ASA# 3024151

In most breeds we measure success by Champions, Pedigree and Progeny.  
By Champions we mean 2017 National and International Champion Simbrah Bull,  
SEVEN Years of Champion or Reserve National and International Champions Combined!  
By Pedigree we mean Genetic Power Players.. BCC/CHCC Powerman,  
SCC Queen Anne, BCC Betty Boop, BCC Shady Lady, who have produced some of  
BEST cattle in the Simbrah breed today!  
By Progeny we can only SAY that you come see for yourself..THEY ARE AWESOME!

**Selling Limited Semen Shares and Progeny in our Alamo Sale!!!**

**ALAMO CITY  
ONLINE SALE  
SEPTEMBER 18, 2017**

CattleInMotion

Calf Scramble Certificates Accepted



BARING CATTLE COMPANY  
6128 S. Loop 1604 E-2  
Elmendorf, Texas 78112  
210/621-0095 (Ranch) • 210/867-6651 (Trey)  
[www.baringcattlecompany.com](http://www.baringcattlecompany.com) • Se habla español





# QUALITY

## *is a priority at Reavis Farms.*

It's not enough to have registered cattle for our family—we want our registered Simbrah/Simmental programs to be of the highest quality. It's a philosophy we live by every day and dictates every mating decision. Here are three individuals that are representative of our quality first priority. We invite you to visit us and see how our philosophy extends to the whole herd.



We are using Smith CRC Lubbock heavily in our program and will have many calves by him arriving this winter. Lubbock is a product of Satisfies and the three-quarter donor, Bella Vive. We chose to use this bull for several reasons and one that really moved him to the top of our list was his top 1% in the breed ranking for API and top 2% for TL.

## REAVIS FARMS, INC.

WAYNE AND JIM BOB REAVIS

(956) 585-6831 • (956) 207-1447, Wayne cell

6801 W. Mile 7 Road • Mission, TX 78574

[www.reavisfarms.com](http://www.reavisfarms.com) • [JWRreavis@aol.com](mailto:JWRreavis@aol.com)

*Reavis Farms is a diversified family farm, raising cattle, onions, watermelons, sunflowers, grain sorghum and cotton.*



This is a daughter of our sire, RFI Bad Medicine. Enigma has been a very successful show heifer for Ava Vela. She was the champion of the RGV Junior Show and reserve champion in the RGV Open Show. Bad Medicine is a product of William N Black and our donor, Expressive—who has to her credit Lorelai Hill's many time champion RFI Razen and Jane Hunt's National Champion, RFI Smith Faith. We own Bad Medicine with RGV Cattle Co. and we're selling semen on him—call us for details on this young sire.



**Mark your calendars for  
Simbrah Synergy X  
September 23-24**



We will be offering this bred female at Synergy—she exemplifies our quality priority perfectly. She's sired by Fireball—giving you the genetics of Satisfies, Dream On and Priceless and maternally there's Charismatic and the Little P Cow Family. She's bred to Devil's Cut, who is producing some barn burners. Join us at Synergy, September 23rd and see 563C and our other lots.



# CONGRATULATIONS & A BIG HEARTY THANKS !!!

CONGRATULATIONS to our LMC Jr. Team on all of their wins this year and A BIG HEARTY THANKS to all of our buyers for their continued support. Our Simbrah continue to get better and our list of buyers continues to grow. The future is bright as we continue to strive to make these cattle more practical, productive and profitable for the COMMERCIAL COWMAN.



LMC Gold Medal, the 2013 National Champion is our Senior Heifer Sire and is the most powerful bull we have ever seen in Simbrah. THANKS to Kevin Kraft, Israel Sanchez and Carlos Jr. for your recent purchases.



LMC Chairman is our Junior Heifer Sire that was the top reducing bull of the 2016-17 RGV Performance Bull Test over 100+ bulls of five breeds. He is a LMC Black Perfect out of the champion LMC BBS Jr. sire.



CONGRATS to Madison Clapper for all of her championships this year with her LMC LN 12th Mar a LMC Daughter - LMC SSC Valinda



CONGRATS to Mari Loe for winning MAS with her LMC Gold Medal x LMC BBS Tia. Tia was her last show. She went out with a bang winning big MAS \$\$\$.



CONGRATS to Jennifer Mink for winning Reserve Grand at MAS, LMC Solidation and LMC Jackpot with her LMC Gold Medal cow calf pair.



CONGRATS to MacKenzie Gooch for winning Reserve Division Champ at MAS with her LMC Gold Medal x BBS Junior Walker.



CONGRATS to Jade Williams for her Division Champ at MAS & Round Up with her LMC 6G Red Rock x BBS Junior Walker.



CONGRATS to Josh Hunt on a great show, contest BEST of LUCK to all participating breeders. Study hard and be the best you can be.



MIL GRACIAS to Humberto Wells, long time repeat bull buyer on his recent volume purchase of bulls headed up by this LMC VG Go Getter son



MIL GRACIAS to Sam Correa and Pepe Guerra, repeat buyers for investing in LMC Polled born, another great LMC yf/c Dream Girl head bull son.



MIL GRACIAS to repeat buyers Boring Cattle Co. for investing in LMC Wheel of Fortune out of the great LMC Daughters champion donor.



MIL GRACIAS to repeat buyer Gurnea added for his investment in the proven LMC 6G Pigeonhead who will do them a great job in Mexico.



MIL GRACIAS to Dave Linton for his investment in some fancy Simbrah heifers and this full sib to LMC Chairman. We WILL COME team into the Simbrah breed.



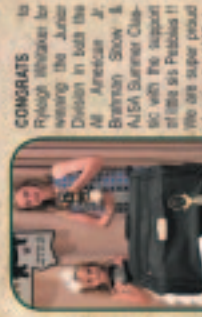
MIL GRACIAS to long time head bull buyer Jenny Wells on her investment in this solid LMC Gold Medal x LMC Mariah's Dream



CONGRATS to Hunter Wells for winning the Victor A. Guerra Memorial Scholarship at the American Jr. Simbrah Round Up.



CONGRATS to Javier Martinez for winning the LMC & Friends ANMO award at the American Jr. Simbrah Round Up.



CONGRATS to Rydagh Alvarado for winning the Junior Division in both the All American Jr. American Jr. Brimley Show & ALCA Summer Classic with the support of the 66 Peabody II. We are super proud of our entire LMC Jr. Team.



A BIG HEARTY THANKS to repeat buyers Davis, Las, Faith & Hope Ostrick family for their recent show heifer & head bull investments.



A BIG HEARTY THANKS to Gernell Parrell on his purchase of a 6G LMC Rain Capin x RGV LMC Dr. Beauty Baby Doll Show Heifer.



MIL GRACIAS goes out to Matthew Sanchez on his recent investment in LMC Showa Beauty, a full sib to Mariposa's many great champion LMC Eldorado.



CONGRATS to our granddaughter Gels Ramirez for winning Division Champ at the American Jr. Simbrah Round Up with her VG LMC Raps Capin x LMC Sweet Dreams. It was her debut and we are very proud of her.



CONGRATS to our grandson Carlos Jr., "Pico" Guzman for winning Sales Bull at the USSA Roundup & the American Jr. Simbrah Round Up. THANK YOU Carlos Jr. for your help. We can't wait for you to start showing.



CONGRATS to our granddaughter Mia Ramirez for winning Reserve Division at the American Jr. Simbrah Round Up with LMC Eldorado, a LMC HOC Brother x LMC Power Woman. It was her debut and we are very proud of her.

**A BIG HEARTY THANKS**  
to all of our buyers at  
**LMC GenePLUS XIX.** Be on the  
lookout for our LMC 30th Annual  
LMC Jr. Round Up on October  
7th and LMC GIVING THANKS  
Sale IV on November 18-21.

**La Muñeca Cattle Co. X**

**Simbrahs, Simbraviehs & POLLED Brahmans**  
**CARLOS & SISTER GUERRA FAMILY**

PO Box 81 • Linn, TX 78563 956-383-7566 (Office)  
Carlos 802-1641 • Victor 607-5515  
Carlos Jr. 330-1963 • email: LaMuñecaCattle@aol.com  
Please visit our website at [www.LaMuñecaCattle.com](http://www.LaMuñecaCattle.com)