

SIMBRAH

World

SPRING • 2013

2013 National Champions



LMC Gold Medal 5Z/75



BCC/CHCC Powerman

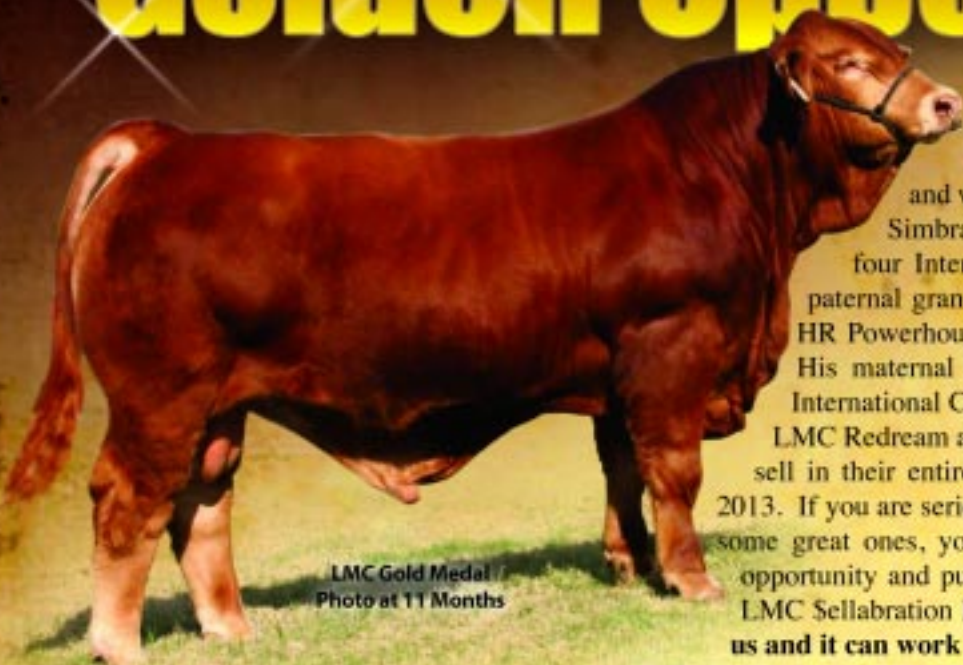


Smith Charming Moves



KSSR Black Mystique

Golden Opportunity



LMC Gold Medal
Photo at 11 Months

We have never been more excited about a herd bull prospect than we are about **LMC GOLD MEDAL**. He is as solid as they come and we believe he has all it takes to be the next great Simbrah herd sire. He has a loaded pedigree featuring four International Champions in his sire LMC Rhino, paternal grandsire LM Full House, paternal great grandsire HR Powerhouse I and his dam LMC WFC Ms. Dream Girl. His maternal brother LMC 6G Red Rock is the reigning International Champion Bull in Houston. His two full sisters, LMC Redream and LMC Daydream are also excellent and they sell in their entirety at the LMC Sellabration II on March 23, 2013. If you are serious about improving your calf crop and raising some great ones, you should consider taking us up on a golden opportunity and purchase a breeding share in Gold Medal at the LMC Sellabration II. The Dream Girl influence is working for us and it can work for you too.



Congratulations to Holli Baker and **BETM Maxine X21** for winning Reserve Champion Percentage Female honors at Synergy V. We appreciate and also congratulate Will Hussey for purchasing **BETM Anna Y29** and leading her to Reserve Division honors the next day at the Showcase. A big hearty thanks goes to our good friends Bubba and Kay Peddy of Four Oaks Ranch for purchasing **BETM Sophie Y16** as the high selling Simbrah female at Synergy V.



LMC Redream 5Z/171 is one of two full sisters to Gold Medal and is one of the best show heifer and donor prospects that we have ever been involved with. Redream and Daydream are exciting young show heifer prospects destined to do great things just like Dream Girl. They qualify for the LMC Jr. Program and should elevate your show string or program. 100% of Redream and Daydream are two more golden opportunities awaiting you at the Sellabration II on March 23, 2013.



Congratulations to Bailey Scogin and **LMC Guardian Angel 5Y260** for becoming the first female to ever win both the MAS Showdown and Synergy Showcase shows. Thanks to the MAS and Synergy members' support, Bailey won over \$6,000 at both shows. We will be selling three LMC Rhino daughters at Sellabration II out of a full sister to Angel's dam LMC Apasionada. We also appreciate the Hinckley and Connors Family purchasing our Simbrah lots at Synergy V.



We are impressed with the development of our young herd sires **MR BETM Niner** (in photo) and **MR BETM Cyclone**. You will have the opportunity to purchase progeny from these two promising young herd sires with proven genetics in 2013. Our 2011 National Champion Bull LMC Arcadio's calves are here and we are excited about them. A big hearty thanks to our MAS VII buyers, especially Smith Farms for buying a top selling full sister to Niner named **MS BETM Nyna**.



BETM Thriller 5Z/3 is an exciting LMC Aficionado son that sells in his entirety at Sellabration II. Thriller is a LMC EF JW Black grandson out of a young T-Cat daughter. Thriller's natural thickness and bold rib shape are exceptional. Many thanks to Durrell Sklar for purchasing his sire Aficionado at Sellabration I, he is satisfied. Here is a golden opportunity to purchase a black baldy herd bull with the genetics and look to improve your bottom line.



BETM
RANCH

Dr. Ernesto Guerra Family
betmguerra@yahoo.com

Ranch Manager
Ted Tschirhart • 210- 827- 7949

Sales Consultant
Victor Guerra • 956- 607- 5515
vgg03@aol.com

Visitors are always welcome at BETM Ranch

greatness better than good; the highest quality *Breeding Great Ones!*



LMC WFC Whitney. She is sired by LMC Soldier and out of the great Diva Cow family. Diva of course produced Dream Girl, Moose, Rita and Wave Amigo. At the recent Synergy Sale Diva sold for \$20,000, Rita sold for \$22,500 and Wave Amigo sold for \$7,000. WE ARE SELLING WHITNEY IN THE LMC SELLABRATION SALE, MARCH 23RD! A daughter of Whitney and Smith Nu Wave II sells, too!



Smith Farms Great Moves-We sold this young, fancy three-quarter blood female to Smith Genetics and Southwestern Farms at Synergy. She is sired by Dream On and out of a She Moves daughter. Thanks to Tim and the Ray Hill family for that purchase and to our other buyers: Jeff Dzuik, CRC Cattle Co., McCrary Farms and Brooke Springer.



Smith's Bella Delight. This female is headed to our donor lineup! She's sired by Sargeant, the great maternal sire. His progeny continued to be in demand at the recent Synergy Sale. Her dam is Smith Bella Bella, one of the great females ever in the breed.

We've added some great pieces to our program, including embryos from Triple P Juliet, Smith Bella Bella and we've bought into Nu Wave II. We will be offering cattle at the Sellabration, Elite and Synergy Sales, plus we have two lots consigned to the International Sale in Houston.

We also have $\frac{3}{4}$ Dream On sons and Simbrah bulls For Sale!

Smith Farms is committed to building a program that will produce great ones!



**October 26, 2013
4:00 p.m.
Smith Genetics, Giddings, Texas**

Ronnie & Susan Smith
7736 FM 428 • Denton, Texas 76208
817-625-4366, office • 817-874-3431, cell
susan@americanrecyclinginc.com

Sargeant

His value as a maternal sire continues to dominate sale rings

At the recent Simbrah Synergy V Sale, individuals with NF Smith Sargeant in the pedigree were in demand. The 29 lots bearing his name in the lineage averaged \$5,480 and grossed \$158,900.

The Sargeant females have continued to draw interest from cowmen as they reflect his high EPD numbers for maternal weaning weight and show great femininity, style, eye appeal, correction and mothering ability.

Now that his daughters are in production, the demand for the next generation continues to remain equally as strong.

Topping the Sargeant offering:

Lot 129-Embryos sired by Sargeant and out of Bella Bella for \$17,000. Offered by Smith Genetics and purchased by Southwestern Farms

Lot 61-An April 2012 daughter of Sargeant and Bella Bella for \$16,000. Offered by Ronnie and Susan Smith and purchased by Brooke Springer.

Lot 131-Embryos sired by Sargeant and out of Smith Hearfelt for \$15,000. Offered by Smith Genetics and purchased by Southwestern Farms.



Lot 136

Lot 136-A November 2011 daughter of Sargeant and out of Smith Black Mystic for \$12,500. Offered by Smith Genetics and Ronnie Reeves and purchased by Johnson Cattle Co.



Lot 84

Lot 84-A June 2011 daughter of Sargeant and out of Oprah for \$10,000. Offered by Wentz Farming Co. and Smith Genetics and purchased by Southwestern Farms.

If it's cow power with economic value you want, then it's Sargeant influenced progeny you want!

NF SMITH SARGEANT OWNERS

Reavis Farms 956/207-1447

Neumann Farms 979/324-3337

Hagan Cattle Co 361/293-4720

Smith Genetics 512/587-7896

Smith Farms 817/625-4366

Walters Livestock Enterprises 979/277-2817



Features...

10 National Simbrah And Percentage Simbrah Show. Breeders vied for titles and promoted Simbrah at the National Show.

20 American Junior Simbrah Roundup
All the details you need to begin gearing up for the big summer event.

22 Stepping Up To The Plate
A visit with Tim Smith, the newly elected American Simmental Association South-Central Trustee.

26 Do's And Don'ts For Breeding Season
A checklist to assist breeders with pregnancy rates in cows and heifers.

34 By The Numbers
A look at the most popular sires in the breed.

Of Interest...

3 \$ellabration News

6 Synergy V Recap

33 Simbrah Outfits on Facebook

36 News You Can Use

38 Brush Country Sale Recap

47 Save The Dates

47 Index to Advertisers

On The Cover...

Scenes from the 2013 National Simbrah Show
Highlight this issue's cover.
Photos by Show Champions.



SIMBRAH World

SPRING, 2013 • VOLUME IV, NUMBER 1

Southern Livestock Publishing, Inc.

Mailing Address:

P.O. Box 791364 • San Antonio, TX 78279-1364

Office Located: 407 Breesport • San Antonio, TX 78216

Phone: 210/524-9697 • **Fax:** 210/524-9690

E-mail: slivestock@southernlivestock.com

www.southernlivestock.com

Publishers: Jim Banner and Michael Sturgess

Editor: Daren A. McCutchen

Contributing Editor: Martha Hollida Garrett

Office Manager/Bookkeeping: Jean Tiedeman

Livestock Advertising:

Martha Hollida Garrett Mob. 903/316-8465

Commercial Advertising:

Loren Jackson - Manager 210/867-5553

Copy & Contract Regulations:

The Publishers reserve the right to accept or refuse advertising. The Publishers reserve the right to label as "Advertisement" any copy that simulates editorial comment.

Advertiser agrees to waive the Publishers and its employees of responsibility from any and all claims or suits arising out of publication of advertising based on information supplied by the advertiser or his agent.

The Publishers hereby expressly limit their liability resulting from any and all misprints, errors and/or the running of a corrected advertisement or editorial correction notice.

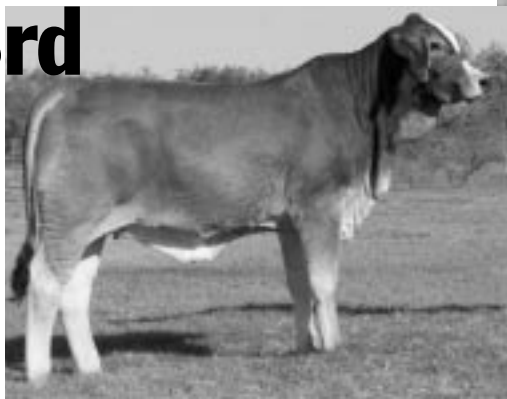
The views and opinions expressed in all editorial material are those of the writer or persons interviewed and not necessarily those of the Publishers.

Your viewpoint and opinions are welcome. The Publishers will make every effort to publish responsible replies. The Publishers however, reserve the right to edit or reject material which they deem objectionable.

LMC \$ellabration Sale & \$20,000 Show Set for March 23rd

"In keeping with our tradition of creating positive events to grow the Brahman, Simbrah and Simbravieh breeds, La Muneca Cattle (LMC) will be hosting LMC \$ellabration II on March 22 and 23rd, 2013 at La Muneca. This event will feature a sale and a \$20,000 junior show. The offering will consist of Simbrah, Simbravieh and Polled Brahman cattle from us and LMC clients. We will be selling 100 plus lots, 40 of which will be the best set of bulls we have ever sold and a great set of females featuring some of the most productive cow families in the history of these breeds," states LMC owner, Carlos X. Guerra.

The annual LMC Jackpot will also be held on this weekend bringing the total to over \$35,000 that these LMC juniors will be competing for in March. Last year they were awarded \$43,000 at this same event. Some of these LMC juniors will



One of several purebred Simbrah heifers selling in the La Muneca \$ellabration.



LMC Zydeco, one of several herd sire prospects selling at the La Muneca \$ellabration.

also be selling their show heifers at this sale, which will add even more quality to an already great offering.

There will be both junior bull and junior heifer shows of all three breeds. All of the cattle shown and sold will have at least one LMC parent. There will be a minimum purse of \$20,000 with one-half of that going to showmanship as is

(Continued on page 42)

Thank You!



**RFI Real Deal -
now part of our
program.**

We want to thank the following Simbrah breeders for their confidence in our program and their purchases from us this year!

Danielle Lawrence • Kaitlyn Smith • Smith Genetics
Southwestern Farms • Circle M Farms • Pine Ridge Ranch
Bob and Tammy Maiorano • 7N Ranch

Look for our cattle in Synergy VI!!!



Richard and Betsy Foster and Richard III
P.O. Box 1077 Wallis, Texas 77485
713/412-4487 Or 713/412-4480 (Richard III)
diamondrf@peoplepc.com

Burch Cattle Company News

We want to thank our Synergy V buyers

Thank you Atzenhoffer Family, Jorge Luis Uriegas, Southwestern Farms, Tom-Lin Ranch and Smith Genetics. We sincerely appreciate your purchases from our herd.

in the LMC \$ellabration Sale, March 23rd, Linn, Texas. We invite you to study them and be in the Valley for the big Simbrah weekend.

News Flash: Also we are selling three fancy females

And we've purchased an interest in RFI Real Deal!

BURCH FARMS

Rickey Burch Family

P.O. Box 755 • Hempstead, Texas 77445

979/826-3231 office • 713/206-2579 cell

burchfarms@peoplepc.com • www.burchcattle.com

Thank You for making our final walk down the red carpet so memorable



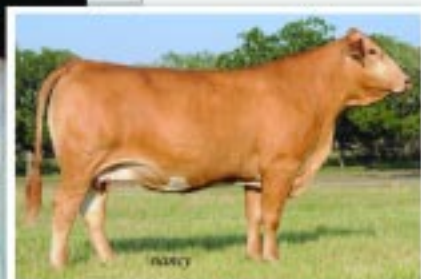
IMC *Oprah*



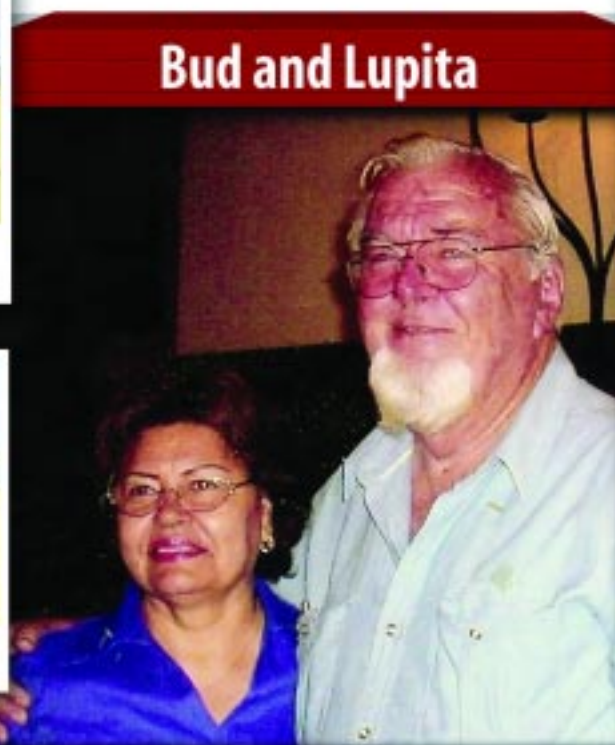
IMC *Diva*



IMC WFC *Rita*



Triple P *Juliet*



Bud and Lupita



Thank you Ray Hill and Family of Southwestern Farms and Smith Genetics for your purchase of the four donors and other lots! We are excited to see how you advance the breed with these Wentz purchases!

To the buyers of our lots at the Synergy Sale, we truly say thank you. Bud would have been thrilled to see the interest in the cattle and how Simbrah breeders appreciated our genetics. Thank you Southwestern Farms, Smith Genetics, Johnson Cattle Co., Smith Farms, CRC Cattle Co. 7N Ranch, Reavis Farms, Lazy SF Ranch, Walters Livestock, Bob Buresh, Triple P Ranch, Heidi Poppe, BETM Ranch, 6G Ranch, Victor Guerra, Kelly Salyer, La Morra Ranch, Candice Tindle, Henly Cattle Co., Pine Ridge Ranch, Burch Farms, Cliff Marshall, and Mark and Lisa Noack for your purchases.



"Birthplace of the American Simbrah"

Bud and Lupita Wentz

P.O. Box 27 • Olmito, TX 78575

956/350-4444 (H) • 956/371-7377 (C)

When it comes to winning...

We love it when our customers win!

And, win they did, at the National Show in San Antonio!



Smith Charming Moves ~ The 2013 National Grand Champion Female exhibited by Kaleb Fontenot. Sired by Smith Evan and out of She Moves.



Smith Wentz Diamond Diva ~ The 2013 National Intermediate Champion Female. Exhibited by Sophie Palmore. Sired by Smith Nu Wave II and out of Diva.



Smith Sheza Priceless ~ The 2013 National Percentage Reserve Grand Champion Female. Sired by Smith Matt N Black and out of Priceless. Owned by Sophie Palmore.



Smith Wentz Blackfoot ~ The 2013 National Reserve Intermediate Champion Bull. Co-owned by Southwestern Farms. Sired by Smith Nu Wave II and out of Diva.



Tim and Haley Smith

P.O. Box 330 • 1316 PR 2231 • Giddings, Texas 78942

512/587-7896 • smithgenetics1@gmail.com

www.smithgenetics.com

We value our customers and want to congratulate all who showed, making it a great day at the National Show for Smith Genetics.

Simbrah Synergy Recap

Sale Passes Million Dollar Mark



The Simbrah breed experienced a milestone at the Simbrah Synergy Sale, as the sale offering grossed more than a million dollars, as breeders competed for the 191 head of cattle. Bidding was competitive, spirited and enthusiasm for the breed was strongly evident from the first to the last lot as the sale saw a \$5,650 average. The sale was held October 27th at Smith Genetics, Giddings, Texas.

The offering from 14 progressive programs, featured the dispersal of the Wentz Farming Company's herd, which included four of the top donors in the breed, LMC Oprah, LMC Diva, LMC WFC Rita and Triple P Juliet. Southwestern Farms, Kirbyville, Texas purchased Oprah for \$35,000, while they partnered with Smith Genetics, Giddings, Texas to add the other three at \$20,000, \$22,500 and \$22,000. In addition, the progeny of these four donors were some of the most sought after lots in the sale and sold into several herds.

Topping the sale and earning the title as the highest valued cow in the breed was Smith Black Mystic and her October heifer calf sired by Smith Nu Wave II. Southwestern Farms paid \$44,000 to own one-half interest in the donor, who was sired by HR Power House 1 and half-interest in the calf. The lot was from the Smith Genetics program.

The Nieschwietz Family, 7N Ranch, Falls City, Texas made several purchases in the sale, including, LMC WFC Wave Amigo 5U/58. The son of Smith Nu Wave II and out of one of top donors selling, Diva generated a final bid of \$7,000 for full interest and possession. He was offered by La Muneca Cattle Co and Louie Flores, Linn, Texas.

A flush in Smith Sweet Bella, from the Smith Genetics program, generated a final bid of \$30,000 from Ronnie and Susan Smith, Smith Farms, Denton, Texas. Johnson Cattle Co., Pleasanton, Texas was contending bidder and chose to pay \$30,000 for a flush also. Sweet Bella is a daughter of the great Bella Bella and is sired by Smith NF Simply

Great, a son of the Simmental sire, Dream On and out of the now deceased, Madam X cow.

Kelly Salyer, Wharton, Texas outlasted many bidders to own a September 2012 daughter of the donor, Juliet and Smith Isgrig Charismatic. The red, polled Simbrah heifer was a favorite of many and sold with her commercial recipient dam for \$20,000. She was offered by Wentz and Smith.

Johnson Cattle Co also purchased a July 2011 daughter of Smith Nu Wave II and LMC Oprah for \$17,500 and a February 2012 daughter of Smith Nu Wave II and LMC Diva for \$16,500. Both of these lots were from the Wentz/Smith offering

Another top selling show prospect was purchased by Brooke Springer, Simms, Texas for \$16,000. She was from the Smith Farms program and was an April 2012 daughter of Smith NF Sargeant and out of donor cow, Smith Bella Bella.

Southwestern Farms also added two embryos from the mating of Smith NF Sargeant and the Heartfelt cow for \$15,000. These embryos will be full sibs to the Smith Priceless cow, one of the top matriarch's in the breed.

Coronado Cattle Co., San Antonio, Texas purchased the top selling bred female in the sale for \$9,000. The Smith Top Shelf x LMC RB Muneca sold safe in calf to Smith Isgrig Charismatic, the #1 ranked bull in the breed for EPDs. She was offered by Smith Genetics.

Topping the three-quarter blood part of the sale was a daughter of BCC Majestic from the Diamond RF Farms, Wallis, Texas and Baring Cattle Co, Elmendorf, Texas program. She sold safe in calf to Automatic, a son of Smith Nu Wave II. Smith Genetics and Southwestern Farms purchased her for \$10,000.

BETM Ranch saw their yearling



Southwestern Farms, Kirbyville, Texas was the volume buyer at the Simbrah Synergy Sale, October 27th, Giddings, Texas. They purchased several lots from the offering, including top donors from the Wentz Farming Co. dispersal. Southwestern Farms owners, Ray and Suzanne Hill and family are pictured with Tim Smith and the Wentz Family.



Johnson Cattle Co., Pleasanton, Texas purchased a flush in Smith Sweet Bella for \$30,000 from Smith Genetics, along with other lots at the Simbrah Synergy Sale. They are pictured with Tim Smith.



The Nieschwietz Family, 7N Ranch, Falls City, Texas made several purchases at the Simbrah Synergy Sale, October 27th.



Jorge Luis Uriegas, from Mexico added genetics from the offering at Simbrah Synergy V, which included cattle from 14 progressive Simbrah programs.

Simbrah Synergy...

(Continued from page 8)

daughter of LMC HS Rocco and Miss JWL Niki top the Simbravieh offering at \$7,800. The heifer was purchased by McKenna Tshirhart, Castroville, Texas.

Volume buyers included Southwestern Farms, 7N Ranch, Smith Genetics, Jorge Luis Uriegas, Mexico; La Morra Ranch, Floresville, Texas; Jeff Dziuk, Falls City, Texas, Heidi Poppe, Smithville, Texas and Bob and Tammy Maiorano, Driftwood, Texas.

The sale was auctioneered by Terry Reagan and was broadcast live by Cattle In Motion. Simbrah Synergy participants include BETM Ranch, Baring Cattle Co., Burch Farms, Diamond RF Farms, Hagan Cattle Co., La Muneca Cattle Co., McCrary Farms, Pine Ridge Ranch, Reavis Farms, Smith Farms, Smith Genetics, Triple J Ranch, Triple P Ranch and Wentz Farming Co.

Simbrah Synergy Showcase Awards \$15,000 In Prizes And Money

The Simbrah Synergy Showcase V drew 95 head of cattle to the event, held in conjunction with the Simbrah Synergy Sale, the weekend of October 27-28th at Smith Genetics, Giddings, Texas. The junior exhibitors vied for prizes and cash awards totaling \$15,000 and the event was sponsored by the participants in the Synergy event. Wyman Poe served as

(Continued on page 42)

Bailey Scogin exhibited the Simbrah Synergy Grand Champion Purebred Female. The heifer was sponsored by La Muneca and is a daughter of LMC Smith RFI Red Bullet. She won \$3,000, plus a buckle and banner.



Cameron Chappell exhibited the Simbrah Synergy Reserve Grand Champion Purebred Female. The heifer was sponsored by La Muneca and is a daughter of Dr. Feel Good. He won \$1,500, plus a buckle and banner.



Adriana de los Santos exhibited the Simbrah Synergy Grand Champion Percentage Female. She was sponsored by La Muneca and sired by MHF Manhattan. She received \$600, plus a buckle and banner.



Corey Todd exhibited the Simbrah Synergy Grand Champion Simmental Female. The heifer was sponsored by Smith Genetics and was sired by Flying B Cut Above. He received \$600, plus a buckle and a banner.



A New Route To Simbrahs

We're putting together a select Simgenetics program and we're excited about the route we are taking to breed Simbrah. We've purchased some unique Simmental matings and will be crossing those with Purebred Simbrah bulls to bring some new blood to the breed.

Here's two new Simmental females that we will be breeding to produce Simbrahs!



Smith Ethel 521Y

Sired by Top Fuel U250 HR and out of an ER Red Dash bred dam.

Smith NPCC Darcy 4Y

Sired by Smith Matt N Black and out of a female from the Hudson Pines Love Me Don't You Cow Family.



Watch for our Simbrahs. . . we're bringin' them!

Bob and Tammy Maiorano

678 Moss Rose Lane • Driftwood, Texas 78619
Tim Smith, consultant 512/587-7896 • smithgenetics1@gmail.com

We Appreciate You!

John Paul Rodriguez will be campaigning this Triple P bred Ronen daughter this year.



The Popp family would like to extend a special thank you to the buyers of our cattle at the recent Synergy Sale. We appreciate your evaluation and acceptance of our cattle and look forward to seeing their influence on your program!

Thank you

Southwestern Farms • John Paul Rodriguez
Bailee Grimble • Jeff Dziuk • Heidi Poppe • Scott Conners

Triple P Ranch

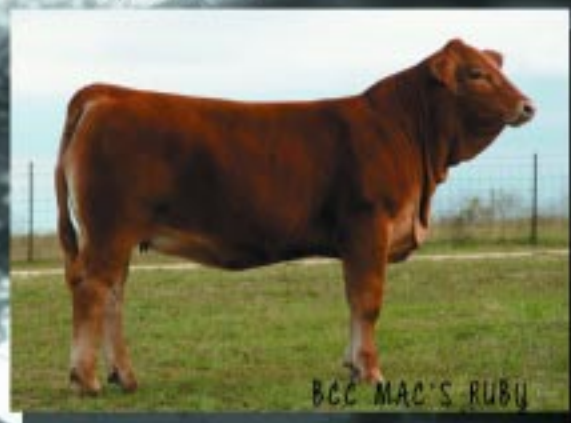
Harvey and Marcy Popp and family
12525 Roy Rd • Pearland, Texas 77581
713/906-3992 • happytrails1029@yahoo.com

POWER PACKED PROGRAM

BULL POWER...



SHOW POWER...



POWERFUL!!



GENETIC POWER...



BARING CATTLE COMPANY

6128 S. LOOP 1604 E-2

ELMENDORF, TEXAS 78112

210/621-0095 (RANCH) • 210/867-6651 (TREY) • 210/867-6650 (ROY)

www.baringcattlecompany.com • Se habla español

Visitors Always Welcome

the *Elite*



Where Champions Are Born.

Hagan Cattle Co is home to championship cattle and more importantly to you – we have calves for sale backed by champion genetics. We know the kind of cattle it takes to be competitive as we have done our fair share of showing and winning. If it's championships you are wanting, then come to Hagan Cattle Co.!

**Mark your calendars for
September 21st as we host
the *Elite* Sale**

**An offering of approximately 85 head
of Simbrah and Simmental cattle.
Then the following day there will be
a \$25,000 show for exhibitors who
purchase cattle in the sale or have
bought cattle from an Elite sponsor.
Follow the event on Facebook!**



Kim Hagan Family

1133 State Highway 111 • Yoakum, TX 77995

Kim: (361) 293-4720 • Reese: (361) 293-4721

www.hagancattle.com

reesehagan@aol.com



Smith CRC Nu Perfection- 2012 National and International Champion Female. Sired by Smith Nu Wave II and out of Hagan Smith Irreplaceable. Exhibited by Caleb Rodenbeck.



Hagan Smith Show Stopper- 2010 International Champion Female. Sired by Smith Nu Wave II and out of Hagan Smith Irreplaceable. Exhibited by Stephanie Gunlock.



Hagans Lucky Charm- 2013 Fort Worth Reserve Heifer Calf Champion and 2012 TJSSA Futurity Grand Champion. Sired by Smith NF Sargeant and out of Hagans Priceless. Exhibited by Callie Henly.



Hagan Khloe- 2012 Fort Worth Reserve Grand Champion Female. She is out of our Look At Me donor. Exhibited by Callie Henly.



Hagans Callie- 2011 AISA National Classic Grand Champion Female. Sired by Johnnie Walker and out of our great donor, 50. Exhibited by Casey Henly.



National Champions Named In San Antonio

One of the most anticipated events of the year for Simbrah enthusiasts is the San Antonio Livestock Stock Show and Rodeo and annual National Simbrah Show and National Percentage Show. This year's show boasted 197 head of cattle overall and were evaluated by Doug Husfeld of Texas. The show, which took place on Monday, February 11, 2013, exhibited the strength of the breed with quality cattle deep in the classes, according to Husfeld.

One of the most anticipated events of the year for Simbrah enthusiasts is the San Antonio Livestock Stock Show and Rodeo and annual National Simbrah Show and National Percentage Show. This year's show boasted 197 head of cattle overall and were evaluated by Doug Husfeld of Texas. The show, which took place on Monday, February 11, 2013, exhibited the strength of the breed with quality cattle deep in the classes, according to Husfeld.

In the female show, grand champion honors went to Smith Charming Moves, owned by Kaleb Fontenot, of Cypress, Texas. Smith Charming Moves won the junior champion division before being named grand champion. She is a February 26, 2011 female out of Smith Evan and the She Moves cow.

The grand champion bull honor at the National show went to LMC Gold Medal 5Z/75, owned by La Muneca Cattle Co., Louie Flores, 6G Ranch and BETM Ranch. He is sired by LMC Rhino 5W/367 and is out of Dream Girl. He was born March 5, 2012 and won the calf division before being named grand champion.

Taking home the reserve grand champion title was KSSR Black Mystique out of LMC Johnnie Walker 5R179, owned by Caleb Rodenbeck, Brenham, Texas. Bred by Knezek Simmental/Simbrah Ranch, she is a January 2, 2012 female that won the calf division as well.

The reserve grand champion bull was won by BCC/CHCC Powerman, owned by Baring Cattle Co and Honeycutt Cattle Company, Mabank, Texas. He is sired by PRR Black Major 25R and was born March 28, 2011 and won the junior champion bull title on his way to the overall title.

Other winners in the female show were Smith Genetics, Giddings, Texas, with their female, Smith Bella Luna, a Smith Satisfies daughter, for reserve calf champion. Sophie Palmore of Kirbyville, Texas exhibited the intermediate champion female with Smith Wentz Diamond Diva, a December 27, 2011 heifer sired by Smith Nu Wave II. Tyler Denny of Edinburg, Texas, won the reserve intermediate champion female title with LHH Sydney 105Y, an October 18, 2011 female sired by LMC JWB Amigo 5U/286. Victoria Villanueva of Edinburg, Texas won reserve junior champion female honors with LMC LN Blackberry, an April 21, 2011 heifer sired by LMC ATZ Dr. Feel Good. Baring Cattle Co., Elmendorf, Texas, saw BCC/CHCC Lady Bug, a December 29, 2010 female sired by PRR Black Major 25R, win the senior champion division. Allison Connors, Lott, Texas, exhibited the reserve senior champion female, BBC Scarlet, a December 14, 2010 heifer sired by NF Smokin Gun.

Other class winners included Victoria Villanueva with LHH Torias Wonder, an April 22, 2012 female sired by LMC JWB Amigo 5U/286; Callie Henly, San Augustine, Texas with Hagan Rock Star 550 Z, a March 22, 2012 female sired by LMC Johnnie Walker 5R179; Rising Sun

Ranch, Edinburg, Texas with their heifer, LMC Kiska 5Z/56, a February 24, 2012 daughter of LMC ATZ Dr. Feel Good; Sabrina Cano, Pharr, Texas with Uno's Pretty Neat, an August 25, 2011 female sired by LMC RFI Smith Uno; and Baring Cattle Co. with BCC Misty Moon, a June 20, 2011 female sired by J7N Vicmar 420.

Other winners in the bull show included RFI Real Deal, owned by Reavis Farms, Smith Genetics, Burch Farms, Southwestern Farms and Diamond RF Farms, who took home the reserve bull calf title. He is a February 26, 2012 calf sired by Smith Evan. La Muneca Cattle Co., Newt Huffman and Louie Flores saw 6G LMC Pappadeaux Y111, sired by 6G/LMC Rajin Cajun W908 win intermediate champion bull division. He is a September 26, 2011 bull. Smith Wentz Blackfoot, owned by Smith Genetics and Southwestern Farms, Kirbyville, Texas won the reserve intermediate champion bull division. He is a December 18, 2011 bull sired by Smith Nu Wave II. Crown C Cattle Company, Kosse, Texas saw Texas Traditions win reserve junior champion bull honors. He is an April 11, 2011 bull sired by LMC JWB Hurley 5W/314.

Other class winners included Smith Genetics with Smith Un Rivalled, a May 4, 2011 bull sired by Smith Satisfies and Easton Higgins, Spring, Texas with his bull Smith 5H NU Black Onyx, an April 23, 2012 bull sired by Smith Nu Wave II.

The produce of dam competition was won by Smith Genetics with the progeny of LMC Miss Diva. Smith Evan's progeny won get of sire honors, exhibited by Smith Genetics and La Muneca Cattle Co. won best 3 head.

Percentage Show

Although numbers were small in the show, the quality was present in the second annual National Percentage Simbrah Show.

The grand champion percentage female title went to Hagan Red Blaze 132Z, a daughter of Hagans Red and owned by Addie Trojanowski, Bigfoot, Texas. The heifer won the calf division. Sophie Palmore and Smith Sheza Priceless, a daughter of Matt N Black won the reserve grand title and reserve calf champion title.

Hagan Cattle Co., Yoakum, Texas won the percentage grand champion bull title with Hagan American Chopper, a son of ZKCC Chopper 844U. He was junior champion of the show. Smith Genetics saw their entry of Smith Hi Caliber, a Matt N Black son take the reserve grand title and bull calf honors of the percentage show.

Other percentage winners included Hagan Cattle Co with the intermediate champion female, Hagan Devine 6Y, sired by ZKCC Chopper 9844U and La Morra Ranch, Floresville, Texas with Hagan Delilah 837Y, a daughter of LN Knight U68 as the reserve intermediate champion female.

BAC Cattle, North Richland Hills, Texas won the reserve bull calf title with BAC Copperhead, a son of SS Ebonys Premium Blend.

THANKS TO REAVIS FARMS FOR SPONSORING THE NATIONAL SHOW PROGRAMS. ALSO SPECIAL THANKS TO JOE B. AND NELDA RODRIGUEZ AND THE BENNY CANO FAMILY FOR ORGANIZING THE BARN PARTY.



Kaleb Fontenot exhibited the 2013 National Grand Champion and Junior Champion Female, Smith Charming Moves.



La Muneca, Louie Flores, 6G Ranch and BETM Ranch exhibited the 2013 National Grand Champion Bull and Bull Calf Champion, LMC Gold Medal 5Z/75.



Caleb Rodenbeck exhibited the 2013 National Reserve Grand Champion Female and Heifer Calf Champion, KSSR Black Mystique.



Baring Cattle Co. and Honeycutt Cattle Co exhibited the 2013 National Reserve Grand Champion Bull and Junior Champion Bull.



Addie Trojanowski exhibited the 2013 National Grand Champion Percentage Female, Hagan Red Blaze 132Z.



Hagan Cattle Co. exhibited the 2013 National Grand Champion Percentage Bull, Hagan American Chopper.



Smith Genetics exhibited the 2013 National Reserve Heifer Calf, Smith Bella Luna.



Sophie Palmore exhibited the 2013 National Intermediate Champion Female, Smith Wentz Diamond Diva.



Tyler Denny exhibited the 2013 National Reserve Intermediate Champion Female, LHH Sydney 105Y.



Victoria Villanueva exhibited the 2013 National Reserve Junior Champion Female, LMC LN Blackberry.



Allison Conners exhibited the 2013 National Reserve Senior Champion Female, BBC Scarlet.



Reavis Farms, Smith Genetics, Burch Farms, Southwestern Farms and Diamond RF Farms exhibited the 2013 National Reserve Bull Calf Champion, RFI Real Deal.



La Muneca, Newt Huffman and Louie Flores exhibited the 2013 National Intermediate Champion Bull, 6G LMC Pappadeaux Y111.



Smith Genetics and Southwestern Farms exhibited the 2013 National Reserve Intermediate Champion Bull, Smith Wentz Blackfoot.



Crown C Cattle Company exhibited the 2013 National Reserve Junior Champion bull, Texas Traditions.



Sophie Palmore exhibited the 2013 National Percentage Reserve Grand Champion Female, Smith Sheza Priceless.



Smith Genetics exhibited the 2013 National Percentage Reserve Grand Champion Bull, Smith Hi Caliber.

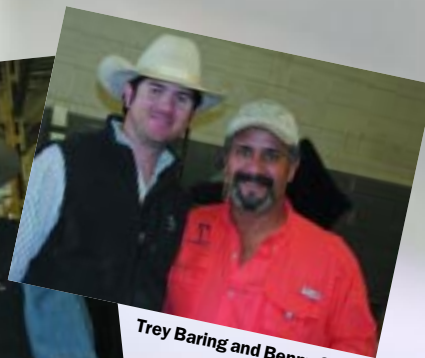
**Photo not
available of Senior
Champion Female**



Show day!



Ray Cantu, Fred Moreno, Jr. and Joe B. Rodriguez.



Trey Baring and Benny Cano.



Ted Tshirhart.



Georgia Dunn, Ellen Tom, Jennifer Freasier and Callie Henly.



Louie Flores.



Carlitos and Victor Guerra, Marshall Meyers and Wayne Reavis.



Barn party.



Nap time.



Onstot gals.



Landrah Moreno.



Sophie Palmore.



Cutis Bettice, Norma Hinojosa, Ana Salinas and Dr. Lucas Hinojosa.



Steve Aitzenhoffer.



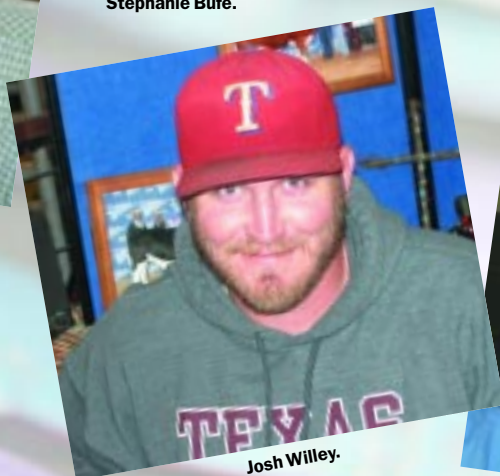
Stephanie Bufe.



Val Walters.



DeeAnn Willey.



Josh Willey.



Wayne Reavis.



Ellen Tom.



Lane Hagan.



Tim Smith.



Tiffany and Kenzie Martinez.

GENETICS

making an impact!

We're building a seedstock program with only quality individuals, carrying cow family lines that are proven, predictable and destined to make an impact!

We are now about 18 months into our program and we have made some breed building purchases in terms of females as you can see in the cattle we have pictured. Plus we have purchased an interest in the exciting young herd sires, RFI Real Deal, Smith XtraOrdinary, Smith Wentz Blackfoot and Smith Wentz Wiseguy.

Watch for the impact of these genetics and our program!



We now have

Smith Black Mystic

LTHC Oprah

LTHC Miss Dina

LTHC WFC Rita

Triple P Juliet

**as donors in our
young program!**



Smith Sheza Priceless

2013 National Percentage Reserve Grand Champion Female. An own daughter of the Priceless - whose flushes, embryos and progeny have sold for more than a quarter of a million dollars. She is sired by Smith Matt N Black, the International Champion Simmental bull.



Smith Wentz Wiseguy

A son of Smith Nu Wave II and out of Triple P Juliet. He is a full brother to Wentz Smith Superior Mom, the heifer campaigned very successfully by Candice Tindle.



Smith Farms Great Moves

A stylish three-quarter blood heifer that is sired by Simmental great, Dream On and she is the granddaughter of the matriarch, She Moves on the maternal side of the pedigree. Owned with Smith Genetics.



Smith Sweet and Satisfies

A daughter of Smith Satisfies and out of dam that is sired by Smith Hide N Seek and out of Sweet Spots, who is a Meyer Ranch 734 daughter. This female brings a unique pedigree to the breed.

SOUTHWESTERN
Farms

Ray and Suzanne Hill

Mark and Samantha Palmore

607 PR 5215

Kirbyville, Texas 75956

409/423-9060 or 409/651-2792

southwesternfarms@gmail.com or sampalmore@yahoo.com

the Elite Sale

An Elite Offering from Championship Building Herds!

September 21, 2013

Hagan Cattle Co. • Yoakum, Texas

The Elite Sale will feature 85 lots of Simmental, Simbrah and Percentage Simbrahs. These lots will be offered by herds that have focused on quality foundation genetics and have produced or utilized championship genetics in their programs.

The offering will be predominately show prospects with pedigrees that reflect winners.

In addition, there will be an Elite Show on Sunday, September 22nd. Exhibitors who purchase cattle in the sale or from a consignor at private treaty will compete for \$25,000 in prizes and awards!

Sale offering will be loaded with cattle that have the potential to be like these champions from our participants' programs!

The Elite Participants

Ashorn Simmental • 979/203-6191

Baring Cattle Co. • 210/867-6651

Benny Cano Cattle • 956/499-5129

BETM Ranch • 210/827-7949

Burch Farms • 713/206-2579

Fly Catcher Simmental • 979/587-2835

Foster Bros. Farms • 936/201-8272

Hagan Cattle Co. • 361/293-4721

Henly Farms • 936/275-6752

Knezek Simmental/Simbrah Ranch • 361/293-3143

La Hacienda Hinojosa Ranch • 956/607-4910

La Morra Ranch • 210/275-0839

La Muneca Cattle Co. • 956/802-1641

Outback Ranch • 979/587-2835

Owen Brothers Cattle Co. • 417/830-8180

Pine Ridge Ranch • 214/850-6308

Reavis Farms • 956/207-1447

Rising Sun Ranch • 361/675-0596

Seale Cattle Co. • 936/201-8272

Sklar & Son Simbrah • 361/782-8234

SVJ Simmental & D&D Cattle • 979/587-2835

Smith Farms • 817/874-3431

Smith Genetics • 512-/587-7896

Turkey Creek Cattle Co. • 903/456-8244

Wentz Farming • 956/350-4444

7N Ranch • 956/460-6002



A champion from the SVJ herd. Owned and exhibited by Anna Maulsby.



The many time Simbrah Champion, LMC -WFC Dream Girl bred in the La Muneca program.



BCC Shady Lady, an International Champion from a family of champions. She was bred in the Baring program.



The 2011 International Simbrah Champion, Smith Ciao Bella. Bred in the Smith Genetics' program.



RFI Ritzy, 2011 National Champion Simbrah Female. Bred in the Reavis' program.



A champion in the Ashorn family program.



Fort Worth Grand Champion Simmental Female from the Owen's Brothers herd.



A champion bred in the Knezek program.



One of the many champion Simmentals bred in the Foster program.



This was a Fort Worth Champion for the Henly family and was bred in the Hogan program.



A BETM Bred Champion.

For additional details contact Reese Hagan at 361/293-4721 or visit our website, www.theelitesale.com

Also follow The Elite Sale on Facebook





June 26-29th

The event for junior Simbrah breeders

This year marks another summer, where junior Simbrah exhibitors will gather for a long weekend of competition, fun, leadership activities and most importantly, networking and making new friends. This year's event will be June 26-29th at the Wharton County Youth Fair Complex in Crescent, Texas.

The American Junior Simbrah Roundup was started in 1998 as Carlos Guerra led the movement to initiate a national junior heifer show event for the breed. Then and now, Simbrahs can show in the American Junior Simmental Association's (AJSA) Classic, but traditionally these events are held outside geographical boundaries of the breed and the numbers are small. By holding a separate Simbrah event, junior exhibitors have the opportunity to participate in a national atmosphere.

The first show was held in College Station, Texas in conjunction with the Texas Junior Simmental/Simbrah (TJSSA) Futurity and it drew 50 exhibitors. The 2012 event saw over 100 exhibitors and their families travel to Mercedes, Texas to vie for honors and make friends.

The AJSR is far more than a cow show and it is patterned after the AJSA Classic and the TJSSA Futurity. There are cattle shows, a showmanship contest, quizzes, skillathon, speaking events, judging contest and fun! It's a great weekend for building leadership qualities and developing life skills.

The cattle shows include a purebred heifer show, purebred bull show, percentage heifer show, as well as bred and owned heifer and bull shows. Also this year the schedule has built-in time for exhibitors to care for their cattle.

During the event there are fun activities and time to become acquainted with fellow breeders. The MAS VIII Sale and Show for exhibitors who have purchased cattle from MAS sponsors will also be held with this year's AJSR. A great volunteer group prepares all the meals and the hospitality is considered some of the best the cattle industry has to offer. It's a family event and it's fun!

The week wraps up with an awards banquet where the top 10 in each event and in three different age groups receive honors. In addition, scholarships are awarded, as well as recogni-

tion to great supporters of the event and junior Simbrah breeders.

Planning Tips

It's never too early to begin planning for the event. Here are a few tips from seasoned competitors:

- Book motel rooms early.
- Make sure your calves are transferred by the ownership date and you have your registration papers in hand. Make sure tattoos are legible.
- Make sure you have health papers and registration papers with you for show.
- Begin studying and preparing now for the contests. Visit the AJSR website for old tests, visit with exhibitors who have competed before, seek out advice on how to prepare and ask about particulars of each contest.
- Please note, you must compete in showmanship to exhibit in the cattle show.

Website: www.simbrahroundup.net

Schedule of Events

THIS IS A TENTATIVE SCHEDULE, PLEASE REFER TO WEBSITE FOR UPDATES

All events at the Wharton County Youth Fair Complex, Crescent, Texas

Wednesday, June 26th
Arrive Anytime. Grounds open at 7 a.m.
1:00 p.m. MAS Showmanship
5-6 p.m. Cattle Care
6-8 p.m. Welcome, orientation, meal

Noon-Lunch
1 p.m. Sales talk
1 p.m. Skillathon
5-6 p.m. Cattle Care
6 p.m. Meal
7 p.m. MAS Sale

Thursday, June 27th
7-9 a.m. Cattle Care
9 a.m. MAS Show
Noon-Lunch
1 p.m. Public Speaking
1 p.m. Cattlemen's Quiz
4 p.m. Judging Contest
5-6 p.m. Cattle Care
7-9 p.m. Burger Cook-out, swim party (location to be determined)

Saturday, June 29th
7-9 a.m. Cattle Care, breakfast
9 a.m. AJSR Show
5 p.m. AJSR Banquet
Cattle released after the banquet

For information on MAS VIII Sale and Show, refer to their Facebook page, or contact Rene Vela at rgvrene@aol.com. MAS entries will be submitted with AJSR entries this year to simplify entering. Entry forms for both of events will be on the AJSR website.

Friday, June 28th
7-9 a.m. Cattle Care, breakfast
9 a.m. AJSR Showmanship, followed by Bred and Owned Show

For More Information Contact:

Dean and Paula Fuchs
979/733-7376
kflivestock@hotmail.com

Joe and Julie Mask
979/559-2000
raftermcattle@gmail.com



Age Divisions – Based on Grade Just Completed

Junior - 3rd - 5th Grade
Intermediate - 6th - 8th Grade
Senior - 9th - 12th Grade

Deadlines

June 1, 2013-Cattle Ownership
June 12, 2013-AJSR Entry due date, fees double after this date
June 12, 2013-AJSR Scholarship deadline

American Junior Simbrah Roundup Motel Information

Country Hearth Inn
1808 FM 102 Rd
Wharton, Texas
(979) 532-1152

Holiday Inn Express
10247 U.S. 59
Wharton, Texas
(979) 282-8300

Super 8
9985 U.S 59 Rd
Wharton, Texas
(979) 532-0301

Entry Forms

Will be on website, www.simbrahroundup.net



Contests

Cattlemen's Quiz-Timed-written test over all aspects of cattle management and Simbrah. Please refer to old tests on the AJSR website.

Public Speaking-A prepared speech over topics chosen in advance. Please watch the website as topics for each age group will be posted. Notes are allowed, but discouraged.

Judging Contest-Six to eight classes of cattle will be presented for placing by competitors. In addition, there will be question classes.

Sales Talk-Exhibitor must present heifer to judges and attempt to sell the animal by discussing items like phenotype, EPDs, pedigree, performance figures, breeding status and price.

Skillathon-A contest-where exhibitors are asked to identify breeds of cattle, tools and items used in a breeding cattle operation, show ring, as well as identify grains, grasses, types of hay and answer general cattle management type questions.

Stepping Up to the Plate

The Board of Trustees of the American Simmental Association (ASA) has a new member from Texas – Tim Smith of Smith Genetics in Giddings – whose background in both Simmental and Simbrah will be especially valuable to help further position SimGenetics as “The” choice for commercial cattlemen nationwide.

By Sharla Ishmael

Growing up in Kentucky, Tim Smith always wanted to be a purebred cattle breeder with a first-class operation of his own. He’s done that. When he moved to Texas in 1984, Smith saw the advantages of Simbrah cattle in this environment and set to work designing a breeding program based on his best Simmental cows to produce the best Simbrah bloodlines he could envision. Based on the success of his own Simbrah cattle and those of his clients, he’s done that as well.

Now he’s ready to take on a new challenge – a key leadership role of the organization representing the broad spectrum of genetics known as SimGenetics – Simmental, Simbrah, Sim-Angus, Fullblood and other hybrids. As an ASA board member, Tim will contribute a considerable amount of time to these breeds through meetings, conference calls, video chats, you name it. Like every association, ASA is only as good as its volunteer leadership, and a lot is asked of the men and women who serve three-year terms (and can be re-elected to an additional three-year term). Smith will be representing the South-Central Region. And, like the other trustees, he will be required to serve on three different committees.

“As a trustee, you have to be aware of all the different segments within ASA,” he explains. “I ran on a write-in ballot because there were two Texans leaving the board and I didn’t want Texas to lose that influence, especially for Simbrah breeders. ASA is financially sound, which is very good. And one of my goals is to ensure that we maintain strong leadership. I’d like to see

SimGenetics positioned to be more aggressive than we have been in the past in promoting all the various breed segments that SimGenetics has to offer.

“The Simmental breed has gained a lot of ground in the last 10-15 years in the commercial bull market,” Smith says. “Everyone calls Angus the “Go-liath,” but because of our strong Simmental and Sim-Angus cattle, we have taken a good percentage of that market away. I think as a breed, we have to do more PR and generate more word-of-mouth promotion instead of advertising.

“In terms of Simbrah, specifically, I think one of our biggest challenges is just changing outdated perceptions of the breed,” he adds. “The old stereotype of Simbrah cattle being large-framed and spotted with high birthweights and high maintenance isn’t accurate. Nowadays your typical Simbrah is clean-sheathed, a solid color – red or black – many with blazed faces and with more polled cattle available and moderate in frame. We have more to offer commercial cattlemen than probably any other American breed. And Simbrah can back that up with the strongest and most accurate EPD database available. I feel called to expose the existing ASA board on the progress that Simbrah breeders and their cattle have made and give this segment a stronger voice within the whole ASA population.”

He also plans to support existing programs ASA has including the Carcass Merit Program, Total Herd Enrollment and the association’s strong commitment to the role of science in

Tim Smith, new American Simmental Association Trustee.



breeding cattle. In fact, 2012 was a year of big announcements in that regard, including the launch of a new 50K DNA testing program to enhance SimGenetic EPDs – already some of the best in the country due to a large, multi-breed database.

50K DNA Testing

The short version is that including this DNA panel with existing data increases the accuracy of SimGenetic EPDS, particularly for young animals. It’s sort of like adding progeny that haven’t been born yet. The 50K DNA test is the result of a multi-year, collaborative effort between ASA, carcass merit cooperators, USDA, the University of Illinois, University of Missouri, Montana State University, GeneSeek and NCBA.

One of the advantages the 50K test has over other DNA genotyping available is that it takes into account there can be large differences between animals in the amount of information gleaned from their DNA tests, according to Wade Shafer, ASA director of performance programs. (The standard has been to assume each animal’s DNA test adds the same amount of information, which tends to either over or under estimate

the results.)

For Simbrah breeders, the 50K DNA test may not be as effective as it is for Simmental, simply because fewer numbers of Simbrah cattle were in the test population.

"The Simbrah breed needs more input to increase the accuracy of these EPDs," Smith observes. "We need to put more animals into the programs and get more markers on file. The larger the database, the better job we can do not only of increasing performance but also screening for things like genetic defects, etc."

"In the drought recently, many producers are seeing what a touch of Brahman can do for them. It makes a big difference," he says. "We need to continue to promote our cattle and further develop the commercial bull market for Simbrah. We've done a lot through our newsletter being published in *Southern Livestock Standard*, and we need to do more cooperative marketing. Sales like MAS, Synergy and the Brush Country Bull Sale are very good because we have so many smaller breeders and this gives them exposure to a larger audience than they might have otherwise."

ASA continues to work on the development of dollar indices, which will add economics to EPDs to estimate an animal's overall contribution to profitability. And the Fall 2012 EPDs were the first to utilize a common base with the Red Angus Association of America, so animals in both breeds can be directly comparable.

"ASA's mission statement is based not only on providing services to members," Smith explains, "but also to provide sound science to the customers of our members – commercial cattle producers. We need to continue to support these programs as well as our junior program through events like the American Junior Simbrah Roundup, the Simmental/Simbrah Superbowl, Regional Classics and the National Classic, both financially and emotionally."

"I will represent both Simmental and Simbrah breeders as we move forward in a dynamic industry," he says. "The future is very bright and exciting and I'm honored to be a part of it."



Smith has served at the helm of the Simbrah committee for four years and can be found at all events.



Smith believes in the youth involved in SimGenetics. He annually holds a camp at his ranch to help develop leadership activities and was one of the co-founders of the Simbrah-Simmental Superbowl. In addition, he is host for the Synergy Sale and Showcase, a participant in MAS and The Elite shows and sales, as well.

Deep Roots...

- Tim Smith grew up with Simmental cattle in Kentucky, where he graduated with degrees in ruminant nutrition and reproductive physiology.
- Former executive secretary of the Kentucky Simmental Association.
- Moved to Texas in 1984 as manager of Parthenon Corporation, breeding Simmental, Simbrah, Brahman and Red Brangus.
- Helped create the Superbowl junior event, the Simbrah Sensation and Simbrah Synergy.
- Bred many champions over the last 25 years in both Simmental and Simbrah.
- Currently sells cattle all over the world, including Brazil, South Africa, Costa Rica, Thailand, Botswana and Mexico, and is working on exports to South America.

Pine Ridge Simbrahs Engineered To Excel In The World's Warm Weather Grasslands

Our Simbrah specifications were designed 33 years ago to develop very efficient cattle for hot weather climates, where the majority of beef cattle in the world are raised.

We are in the registered business to deliver a product that can produce heart healthy tender beef for the consumer and pounds of profit for the commercial segment. And our cattle excel in show rings across the globe!

You will find cattle carrying the PRR prefix throughout Mexico, Central America and South Africa.

Visit our unique program and see bulls developing our program. Pine Ridge Ranch cattle are predominately polled, not linebred and the emphasis is on efficiency and carcass superiority.



PRR CHOICE 565W ASA #2513493

Sired by PRR Prevail 774S and out of PRR Optima 677J

Pine Ridge Steers Fed At Graham Land & Cattle

- Average Carcass Weight 804 lbs.
- REA 14.9 sq.in
- Graded 100% Choice
- With no prime and no Standard, Choice offers a very pleasant and nutrient rich eating experience and decreases saturated fat by over 50%
- Average YG 2.3
- 100% YG1, YG2 and YG3

Visit us at

www.simbrah.com

TX

PINE RIDGE RANCH

Home of Ranger Livestock, Athens, Texas

JANE AND BILL TRAVIS

9876 Plano Road • Dallas, Tx 75238

Weekdays: 214-369-0990

Home: 214-348-1618

Cell: 214-850-6308

Email: billtravis@bigplanet.com

Pine Ridge Simbrahs Engineered To Excel In The World's Warm Weather Grasslands



PRR SAM HOUSTON 630Y ASA #2636862
Sired by PRR Optimum 892T and out of PRR Whata Blaze 807T



PRR RITO 545W ASA # 2513491
Sired by PRR Perfection 82S and out of PRR Clarita 522P



PRR SEDONA 004X ASA #2586449
Sired by PRR Papa 702T and
out of PRR Optima 677J



PRR TOPLINE 327S ASA #2590951
Homozygous Polled
Sired by PRR Palisade 813T and
out of PRR Catalina Babe 287U



PRR PILGRIM 008X ASA #2586450
Homozygous Polled
Sired by PRR Whata Dude 536P and
out of PRR Ms Optima 11N

TX

PINE RIDGE RANCH

Home of Ranger Livestock, Athens, Texas

JANE AND BILL TRAVIS

9876 Plano Road • Dallas, Tx 75238

Weekdays: 214-369-0990

Home: 214-348-1618

Cell: 214-850-6308

Email: billtravis@bigplanet.com

Visit us at

www.simbrah.com

A checklist of management factors that can help boost heifer and cow pregnancy rates.

7 Dos & Don'ts for Breeding Season



Good management is key to a successful breeding season whether you rely on artificial insemination or natural breeding. Pasture photo by Carlos X. Guerra.

By Kindra Gordon

“Do things twice as well as you need to because the little mistakes at every point can really add up.” That’s the advice George Perry, a beef reproduction specialist at South Dakota State University (SDSU), gives to cow-calf producers as they prepare their herds — and their management tactics — for breeding season.

To illustrate this point, Perry gives the example that even if you achieve 90%-95% success at each of the four main factors that influence fertility, the end result could be less than satisfactory. For example, 90% of animals detected in standing estrus and inseminated, 95% inseminator efficiency, 90% fertility of the herd and 95% fertility of the semen yields only a 73% pregnancy rate ($90\% \times 95\% \times 90\% \times 95\% = 73\%$).

The fertility level of the herd requires a year-round focus, suggests Perry. “Many people rely on the heritability of fertility, but in my view so much of fertility hinges on management. How cattle are fed, stressed and moved all have an effect on fertility.”

Here, Perry shares a checklist of management tips to help add success to the heifer and cow breeding equation.

1. Aim to get heifers bred early. SDSU’s Perry shares research that shows heifers that are cycling and conceive during first service are more likely to become productive cows with longevity in the herd.

“If heifers don’t conceive first service, data suggests the odds of them having six calves is greatly reduced, and they will exit the herd before they can pay for their development costs,” says Perry.

His recommendation is that heifers need to calve by 24 months of age to achieve maximum lifetime productivity. Moreover, Perry says, research indicates later-calving females rob the calf of future weight gain. One study indicated calves

from later-calving cows were on average 20 pounds lighter at weaning. “Over eight calves, that adds up,” says Perry.

Another analysis conducted by the U.S. Meat Animal Research Center (USMARC) at Clay Center, Nebraska, on a database of 3,700 calves indicated 2.4 lb. of potential weaning weight was being lost per day on each calf born after the first day of calving. “After 21 days, that’s 50 pounds,” Perry points out.

Perry and Rick Funston, beef reproductive physiologist at the University of Nebraska West Central Research and Extension Center, remind producers that the best way to get heifers to start cycling is to have them on a plane of nutrition that allows them to reach 55%-65% of their mature target weight by breeding. However, they caution against under- and over-development, either of which can adversely affect fertility, as well.

2. Consider how heifers are managed before and after breeding. “You can’t turn heifers out after breeding and forget about them,” says Perry. He emphasizes the importance of monitoring heifers for body weight change during the first 30 days after AI.

From his research, Perry has found that a sudden change in the diet following insemination can negatively affect pregnancy success. Specifically, he’s found that when turned out on pasture after breeding, heifers developed in a feedlot often have a higher percentage cycling prior to breeding, but the heifers developed on grass actually have higher pregnancy success. Perry attributes this to a negative energy crash experienced by the feedlot-developed heifers after the transition from the feedlot to grass immediately following breeding.

“Because of the change in nutrition, heifers are crashing, and they can’t maintain the embryo,” Perry explains. Research suggests that if nutrition decreases even by as little as 15% after AI, it can affect embryo quality.

Dos and Don'ts...

(Continued from page 28)

To minimize this period of negative energy gain, Perry suggests producers adapt heifers to grass for up to a month before breeding. Heifers can then be drylotted and supplemented for 10 days while Aling, but when they are turned out to grass post-AI, they should not go through the negative gain period.

3. Pay attention to heat detection. If you are using an AI program on cows or heifers, pregnancy success will be determined by accurate heat detection and insemination at the proper time. Perry notes that the more frequently that cattle are monitored or observed — early morning, midday and evening — the more accurate detection of standing estrus will be. Cows should be

inseminated 12 hours after standing estrus is observed.

He reports that continuous observation of more than 500 animals exhibiting natural estrus in three separate studies indicated 55.9% of cows initiated standing estrus from 6 p.m. to 6 a.m. Furthermore, when cows were observed for standing estrus every 6 hours (6 a.m., noon, 6 p.m., and midnight), estrous detection increased by 10% with the addition of a mid-day observation and by 19% when observed four times daily compared to detecting standing estrus at 6 a.m. and 6 p.m. alone.

For cattlemen who use bulls for natural service of the herd, Perry says heat detection is still important to observe to make sure bulls have libido and are getting heifers and cows bred.

(Continued on page 44)

Bonus Tip: Review your herd health plan

The recommendation to have a herd health plan in place isn't new news to cattlemen. But Russ Daly, SDSU Extension veterinarian, reiterates how important herd health can be on reproduction and pregnancy success. He offers these reminders to producers:

- Prepare heifers prior to their being weaned. He recommends administering a five-way viral vaccine pre-weaning and with a booster at weaning. Vaccinating against leptospirosis (including Lepto hardjo-bovis, if desired) should also be considered for this age group.
- The best time to administer a reproductive vaccine booster to heifers and cows is 30 days pre-breeding. This results in the best levels of immunity early in the breeding season, Daly says.
- Avoid using modified-live vaccines (MLV) in pregnant animals. Daly reports that several instances where this has caused calf fetuses to be aborted have been reported in recent years. He says even though some products may be labeled for MLV administration during gestation, he believes it's too high of a risk.
- Have aborted cases investigated. If you have one or several cows aborting fetuses, Daly suggests getting a diagnosis to see what might have caused it. He suggests keeping records on the aborted/open cows and sending the placenta and fetus — along with a detailed history — to a state lab for diagnosis. The resulting information may help you and your veterinarian identify a herd health concern that can be corrected.
- Always discuss your vaccine or health programs with your local veterinarian before making any change in timing or products used in your program.

Divaaa...
just look at her,
and what she has produced.

LMC Miss Diva first claimed Simbrah fame, when her daughter, LMC WFC Dream Girl was named 2009 National

and International Champion and later sold for a then record price of \$42,000 now, look at her latest — Diamond Diva and Blackfoot!

We purchased Diva in the Synergy Sale with Smith Genetics — largely because of Diamond Diva, who we had already purchased for our granddaughter, Sophie to show. We wanted to multiply Diva's influence in our herd, so we have chosen her young son, Smith Wentz Blackfoot as one of our up and coming sires.

We're proud to have added the influence of this cow family with Oprah, Diva and Rita to our herd in partnership with Smith Genetics.



Smith Wentz Diamond Diva,
2013 National Intermediate Champion

**SOUTHWESTERN
Farms**

Roy and Suzanne Hill
Mark and Samantha Palmere
607 PR 5215 • Kirbyville, Texas 75858
409/423-9060 or 409/651-2792

southwesternfarms@gmail.com or sampalmere@yahoo.com



Smith Wentz Blackfoot,

2013 National Reserve Intermediate Champion Bull



LMC Miss Diva

**Smith
GENETICS**

Tim and Haley Smith
P.O. Box 330 • 1316 PR 2231 • Giddings, Texas 76942
512/587-7896 • smithgenetics1@gmail.com
www.smithgenetics.com

We call them breeding pieces!

We don't just buy cattle, we buy individuals that we consider pieces to our overall breeding program. We are in this for the long haul and realize the value of quality genetics, proven cow families and each year we are energized by the challenge of taking these pieces and completing our breeding puzzle.



Smith Priceless Wish

A daughter of the great Priceless, who has produced more than a quarter of a million dollars in progeny! Priceless Wish could very well be the heir apparent to her mother. She is sired by Smith Nu Approach. We are currently flushing her to a number of sires to multiply her value in our program.



Smith McCrary Andy N Black

We are using this great Simmental sire to produce top three-quarter blood females to add to our program. He sires complete females that are skeletally correct and loaded with depth, dimension and body.

THANK YOU

We want to thank the following buyers of our lots at the recent Synergy V Sale!

We appreciate your interest and acceptance of our cattle!

7N Ranch • Temperance Cattle Co. • Pine Ridge Ranch • Winston Walters
Kim Landry • Southwestern Farms • Mee Family

McCrary Farms

Mark and Martha McCrary

903/667-5135 • 903/278-6819 • mamamc4@aol.com

307 North Runnels • DeKalb, Texas 75559

We accept calf scramble certificates.

History in the making...

BUILDING SIMBRAHS FROM All Angles

These females are now in production. Progeny and flushes for sale!



Pinkie is our JDH Drayton de Manse daughter. Her flawless profile and elegant front 1/3 have made her a judges favorite from Texas to Tennessee. She is now in production with a 1/2 blood foundation Simmental bull calf and will soon be used in embryo transplant to produce both purebred Brahman and foundation Simbrah seedstock.



WHF/PRF Sophistication "Sophie" is our purebred Simmental Milestone daughter that is a flushmate to the 2013 Denver Grand Champion Simmental female! She demonstrates loads of extension up front and out of her hip. You will not find females very often that are as thick and bold sprung with her femininity. This cow can make you some great purebred Simmentals or Foundation Simbrahs. Her future is very bright!



RFD Ritzy is our National Champion Simbrah Female. She continued her winning ways by being named Grand Champion Female at the State Fair of Texas as well. She is due with her second calf in late spring and will be available for flush opportunities this summer/fall. Her excellent udder design and maternal characteristics make her a true cowman's kind.



WHF PRS Heart Throb "Madison" is our Steel Force purebred Simmental daughter. All that have seen her in person are in awe of her mass, soundness and her maternal look. Her winnings thus far have been Reserve Grand in both San Antonio and Houston as a calf and Grand in both Open and Junior shows at the State Fair of Texas. What an exciting 2013 show season this cow promises. She is red, she is stout and she is bred and ready to make an impact on our program and yours.



KC Cayenne 788/O "KK" is our Remington Magnum Red Brahman daughter. This red female as a calf was Reserve Grand in San Antonio and a division champion at the Houston International Show. We bred this female for a first generation, 1/2 blood Simbrah — what a homerun! This female will work for purebred Brahmans, as well as a foundation Simbrah female with a unique twist.



Smith Priceless Passion "Baby Goose" is out of our lead Simbrah donor and is an Infinity X Priceless daughter. She is one of the most consistent winning Simbrah females in 2011-12 and is now in production and is just as successful in the pasture.

WALTERS

Livestock Enterprises

Val Walters Family
2300 Cock's Crow Road, Brenham, Texas 77833
979-277-2817 • vwalters@bettsfirm.com
walterslivestockenterprises.com

Rodney Finch, General Manager of Livestock Operations
979-224-2101 • crodneyfinch@gmail.com

What An Investment

We purchased this female as a show heifer for our son, Kaleb and now look at her as she finishes her show career and starts the return on our investment with this fancy heifer calf at side.



She is Smith Charming Moves, sired by Smith Evan and out of the great LMC She Moves 3L/136. Charming Moves continues the great line of cattle produced by She Moves. The heifer calf at side is sired by Smith Satisfies and we think she is headed to show string, also.

Charming Moves will be joining our small herd and will be a key piece as we move forward in the Simbrah breed.

Smith Charming Moves

Some of her championships include: Reserve Grand Champion at State Fair of Texas Junior Show; Reserve Division Champion at State Fair of Texas Open Show; Breed, American and Supreme Champion at the Fort Bend County Fair; Breed Champion Rings A&B, Reserve Champion Rings C&D at Saddle and Sirloin Show



2013 National Grand Champion Female



David and Thuy Grimes • Kaleb and Katarina Fontenot
17914 Timber Mist Court • Cypress, Texas 77433 • 832/594-7530
info@tmplsc.com • www.temperancelivestock.com

Also follow us on



LMC Red Dream 5Y/270

Leading our program

We've selected this young bull to lead our growing Simbrah program. LMC Red Dream 5Y/270 is sired by LN LMC Dream Up W219, a son of Ante Up and LMC Mariahs Dream 3S/325. Her dam is a Johnnie Walker out of the great Oprah. He's a Fall 2011 bull and is red and polled!

We're so excited to be in the Simbrah breed and to have LMC Red Dream leading our program!



-P- SIMBRAH

Kyle and Heidi Poppe
1632 CR 230 • Weimar, Texas 78962
512/627-2131



Read All About Him He's XtraOrdinary



Smith XtraOrdinary

He could be the next big bull for the breed as he is a combination of pedigree, profile, performance and potential!

He's sired by Smith Isgrig Charismatic, a genetic product of Smith Nu Wave II and the Eleanor Cow Family.

His dam is Smith Madam X, a Dream On daughter. She is also a maternal sister to Sargeant, and a full sister to Smith Simply Great.

His EPDs rank him in the top 1% of the breed for Calving Ease, Weaning Weight, API and TI. He is in the top 2% for Yearling Weight; top 4% for Birth Weight and Carcass Weight and top 10% for Maternal Weaning Weight.

OWNED JOINTLY BY

Smith Genetics

512/587-7896

smithgenetics1@gmail.com

Southwestern Farms

409/423-9060

Reavis Farms

956/585-6831

He's The Real Deal



RFI Real Deal

And here's the reasons we are excited about him...

- Solid red and polled
- Sired by Smith Evan, a Smith Nu Approach x Bella Bella son
- Out of a three-quarter dam, RFI Dominoe, a Smith Also N Red daughter
- His EPDs rank him in the top 3 % of breed for TI; top 4% for API; top 5% for CE; top 10% for Weaning; top 15% for Yearling; top 20% for Birth and top 25% for MCE
- He's stout, big footed, stands on good bone, clean sheathed, wide topped and carries lot of depth and expression of muscle. Just wait till you see him!

Real Deal was produced in the Reavis Farms program and is now owned in partnership with Smith Genetics, Burch Farms, Diamond RF Farms and Southwestern Farms.

***Remember his name,
RFI Real Deal-you will be
hearing more about him!***

Smith Genetics

Managing partner on bull

512/587-7896

Burch Farms

713/26-2579

Diamond RF Farms

713/412-4487

Reavis Farms

956/207-1447

Southwestern Farms

409/423-9060

THE GOAL IS *Quality!*

At 7N Ranch, we have made a number of purchases in the last 12-18 months that we are very confident will move our program forward and establish 7N Ranch as a producer of high quality Simbrah!

We've added bull power with Wave Amigo and Gumbo. They will be used back on our Smith Simply Great and Smith Smooth Operator females. In addition, we purchased a number of embryos out of the great Oprah x Smith Nu Wave and Oprah x Smith Evan, plus embryos out of Diva x Smith Satisfies. We've also added a daughter of LMC She Moves and Outlaw to our program and some other great cattle from a number of progressive programs.

***We're moving forward and
the goal is quality***

***When you want Simbrah, come to 7N
with locations in Donna
and Falls City.***

***LOOK FOR OUR SELECT
CONSIGNMENTS TO
LMC's \$ELLABRATION SALE
AND THE ELITE SALE***

**Nieschwietz
7N Ranch**

**Pete Nieschwietz
P.O. Box 303
Falls City, Texas 78113
956/460-6002
pjnieschwietz@sbcglobal.net**



LMC WFC Wave Amigo-We purchased this son of Smith Nu Wave 11 and out of Diva at the Synergy Sale. He is a full sib to the popular, National and International Champion \$42,000 to LMC WFC Dream Girl. His sire is the popular Smith Nu Wave and his dam is now a donor in the Southwestern Farms/Smith Genetics' programs.

WE HAVE SEMEN FOR SALE ON THIS NU WAVE SON. CONTACT US!



LMC Gumbo-This is a son of 6G/LMC Rajin Cajun W908, which is a whole new bloodline to incorporate into Simbrah. Rajin Cajun is a son of the Simmental sire, JF Net Investment 534S, who is sired by Dream On and on the maternal side of Gumbo's pedigree, you'll find the great LMC EF JW Black 3N/225 and his grandam is the great Diva.



Oprah-We have embryos out of the great Oprah cow and Nu Wave II and Smith Evan. We can't wait to get these calves on the ground and into production in our herd. Oprah is the dam of Diva.



LMC Miss Diva-We have embryos by her and Smith Satisfies. LMC Miss Diva has made her mark already by producing Dream Girl, Rita, Moose and Wave Amigo! We're excited about what this mating with Smith Satisfies, a Simply Great son will bring.



RFI Show N Tell-We purchased this young female from Reavis Farms in Synergy. She's by Smith Hide n Seek and out of RFI Cow Girl. We're excited about her daughter sired by Smith Ronen and the impact these two females will have on our herd.

Follow These Simbrah Ranches/Events

The following ranches or Simbrah related events have Facebook pages and you are invited to follow them!



Knezek Simmental/Simbrah Ranch

Rising Sun Ranch

La Morra Ranch

La Hacienda Hinojosa

RND Cattle Services

Temperance Livestock

Southwestern Farms

Hagan Cattle Company

Smith Genetics

La Muneca Cattle Co.

MAS Sale

Simbrah Synergy

Wentz Cattle

The Elite Sale

Walters Livestock Enterprises

Simmental-Simbrah Superbowl

Freasier Ranch

C-R Simbrah

Pine Valley Farm

BETM Ranch

Smith Genetics

Trademark Cattle Co.

Texas Junior Simmental Simbrah Association

Simbrah World

***Are there more? If so notify us
and we'll post an updated list on
www.simbrahworld.com***

Facebook Fun Fact: Facebook is a social networking service, launched in February 2004, owned and operated by Facebook, Inc. As of September 2012, Facebook has over one billion active users, more than half of them using Facebook on a mobile device (per Wikipedia).

NEW BLOOD FOR THE BREED

We are excited to introduce Smith Stout N Black to the Simmental and Simbrah breeds.

He is a polled, black Purebred Simmental bull that we will be using to produce three-quarter bloods that will carry new bloodlines to the breed, plus we will be using him in our Simmental program.

He's a November 2011 son of CNS Dream On, the bull who has rewritten Simmental history and his dam is Triple C She's Amazing, a daughter of HC Power Drive 88H and Leachmans Red Baldy E7004 cow.

He is a full brother to the now deceased, Smith Also N Red, who produced a great set of females for Reavis Farms.

**We are excited about what he can bring
to our programs and the breed**



Tim and Haley Smith
P.O. Box 330 • 1316 PR 2231 • Giddings,
Texas 78942
512/587-7896
smithgenetics1@gmail.com
www.smithgenetics.com

REAVIS FARMS, INC.

WAYNE & JIM BOB REAVIS
956/585-6831
6801 W. Mile 7 Road
Mission, TX 78574
www.reavisfarms.com
WReavis@aol.com

By the Numbers

The following tables show the sires, who have produced the most Simbrah progeny, based on registrations numbers with the American Simmental Association. Red Hot, a one-quarter Brahman x three-quarter Simmental bull born in 1981 is the leader and does it by quite a distance.

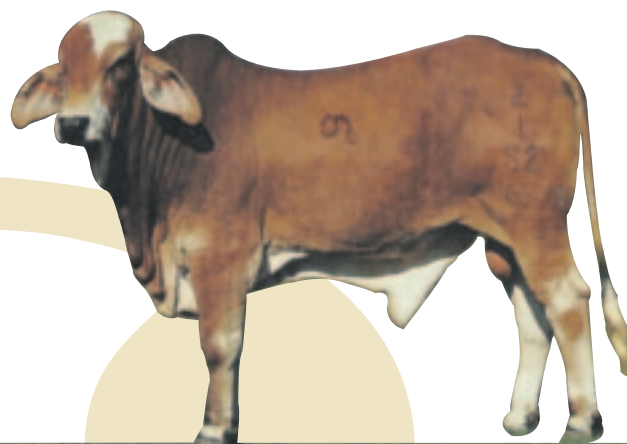


Wards Bravo, bred by A. W. Ward. The second leading sire of Simbrah cattle.

"Red Hot was purchased at the Gala Ranch dispersal, near McCoy, Texas. I went down a few days prior to the sale and spotted him! Wow was I excited. He was just what I'd been searching for . . . a three-quarter bull that had a loaded pedigree and the look! I got back and contacted a few close friends and went back to the sale to get him. We gave \$10,000 for him without any guarantees. Red Hot did everything we asked of him. I sent him over to John Watson to try to halter break and he did in about a week. His first ejaculates of semen froze with E.T. quality. Red Hot was carried to Houston show where we syndicated him for \$100,000. His first progeny where a true genetic explosion! This was the era of big cattle and Red Hot gave delivered size and loads of style in that first cross," describes Ken Persyn.

Wards Bravo, a purebred Brahman sire is the #2 overall sire of Simbrah progeny and he was born in 1981 also.

"Bravo was a tremendous beef bull and in fact the best beef bull I have ever seen. He worked well on several breeds of cattle including Brahman, Gelbvieh, Hereford, Limousin, Saler and Simmental. The best set of calves I have ever seen were a set of 49 F1 Simbrahs bred by Bob & Nina Lundgren. The F1s were out of 49 different Simmy cows, who sired by 36 different bulls. Every calf was outstanding with an average 205 day weight of 786 pounds. They sold everyone of them at weaning to one buyer for \$2,000 per calf. Bravo could be counted on to produce correct, solid red cattle with lots of bone, performance and muscle with great front and rear ends. He is a Register of Renown sire that sold over \$600,000 worth of semen and breeding shares for Guerra Bros. La Muneca still markets semen on Bravo all over the world," states Carlos X. Guerra.



Red Hot, bred by Gala Farming and Ranching Co. The all time sire of Simbrah.

All-time sire of Simbrah progeny.

RED HOT	1354	1/4 SM 3/4 BR
WARDS BRAVO 1/09	756	PB BR
K BAR SOUTHERN COMFORT	748	5/8 SM 3/8 BR
LIGHTNING	631	PB SM
RAB TYRONE N1	614	1/4 SM 3/4 BR
GLC CHAIRMAN	556	5/8 SM 3/8 BR
CR HONCHO 294L	524	1/4 SM 3/4 BR
HR POWER HOUSE 1	492	5/8 SM 3/8 BR
THUNDER R09	477	1/4 SM 3/4 BR
RAB PATRON L17	439	1/2 SM 1/2 BR

HR Power House 1, bred by Hallak Ranch. He is the leading sire of Simbrah progeny in the last 10 years.

Top 10 Sires of Simbrah Progeny In Last 10 Years

HR POWER HOUSE 1	318	5/8 SM 3/8 BR
NF SMITH SARGEANT	270	3/4 SM 1/4 BR
LM FULL HOUSE 5L/133	261	5/8 SM 3/8 BR
SMITH NU WAVE II	244	3/4 SM 1/4 BR
LMC-RFI-SMITH RED BULLET	242	5/8 SM 3/8 BR
RX JALAPENO K031	219	3/4 SM 1/4 AR
LMC MCR POWER GLIDE	214	5/8 SM 3/8 BR
LMC JOHNNIE WALKER 5R179	192	5/8 SM 3/8 BR
PRR PREMIER 600J	189	5/8 SM 3/8 BR
PRR SCOUT 002N	185	3/4 SM 1/4 BR

Smith Nu Wave II, bred by Smith Genetics is the leading sire of Simbrah progeny in the last five years.

Top 10 Sires Of Simbrah Progeny In Last 5 Years

SMITH NU WAVE II	243	3/4 SM 1/4 BR
LMC JOHNNIE WALKER 5R179	191	5/8 SM 3/8 BR
PRR PREVAIL 774S	171	5/8 SM 3/8 BR
NF SMITH SARGEANT	168	3/4 SM 1/4 BR
MR STRACK P510	164	5/8 SM 3/8 BR
LMC-RFI-SMITH RED BULLET	164	5/8 SM 3/8 BR
PRR WHATA DUDE 536P	143	3/4 SM 1/4 BR
RX JALAPENO K031	143	3/4 SM 1/4 AR
PRR RED AMMO 506P	133	5/8 SM 3/8 BR
CR HONCHO LAD 249S	131	5/8 SM 3/8 BR



Celebrating Simbrah's Success

MAS VII Simbrah Sale

and \$15,000 Showdown

We're Moooving The Location... but bringing along the same quality of cattle, that same MAS hospitality and camaraderie!



This fancy show prospect was born in Spring 2012. She is sired by Smith Always N Style, who is a Dream On x Priceless mating and her dam is sired by Nu Approach. Offered by Smith Genetics and McCrary Farms.



This powerful May 2012 consignment comes from La Negra, La Morra and RGV Cattle. She is a daughter of the International Champion, Cowboy Casanova and out of Ante Up daughter. She is loaded with power, bone, muscle and capacity. We've pulled out all the stops to offer you our best.



La Muneca Cattle Company will again be selling a polled Brahman female. She will be a paternal sister to the heifer pictured, who was the MAS VII Sale topper.

**Wharton County Youth Fair Complex
Crescent, Texas
June 28th 7 p.m.**

**To be held in conjunction with the
American Junior Simbrah Roundup**

Two major fun filled events in one big weekend!

**SELLING APPROXIMATELY 75 LOTS OF QUALITY
SIMBRAH** — including some fancy show prospects, as well as embryos, bred females, pairs, and select bulls. Plus the \$15,000 MAS Showdown for juniors who have purchased cattle from MAS participants!

This year's participants will be:

5W Cattle Co 956/245-7996
6G Land and Cattle 361/772-0188
BETM Ranch 210/827-7949
La Morra Ranch 201/275-0839
La Muneca Cattle Co. 956/383-7566
La Negra Cattle Co. 956/607-7408
LPJ Ranch 956/457-0205
Monte Christo 956/207-2087
Reavis Farms 956/207-1447
RGV Cattle Co. 956/279-2200
Smith Genetics 512/587-7896

Catalog will be posted on www.simbrahworld.com and follow us on Facebook for more details.

Sale chairman, Rene Vela, 956/279-2200 or email at rgvrene@aol.com
Auctioneer: Leo Casas (se habla español) 361/362-5863

News You Can Use...

HOTSSA Sale Set For October

The Heart of Texas Simmental/Simbrah Association has scheduled their sale for October 12, 2013 at Drew Ranch, Hearne, Texas.

Consignments are now being accepted for this sale. For additional information contact Jim Carter, president at jhcranch@sbcglobal.net or call 254/697-1078.



- * Semen & Embryo Sales
- * A.I. & ET Equipment Sales
- * MVE & Taylor Wharton Tanks
- * A.I./Palpation Clinics
- * TruTest Scales
- * Professional Exporting & Importing
- * Semen & Embryo Warehousing
- * A.I. Consultation

Bovine Elite, LLC
3300 Longmire Drive • College Station, Texas 77845
800-786-4066 • 979-693-0388 • 979-693-7994 Fax
carl@bovine-elite.com • www.bovine-elite.com

Fields Joins Bovine-Elite Staff



Webb Fields

Webb Fields had joined the staff at Bovine-Elite, LLC, College Station, Texas, according to Carl Rugg, owner.

Fields, a 2011 Texas A&M Animal Science graduate will handle sire procurement, sales and advertising duties for the firm, which has a 21-year history in the semen marketing industry.

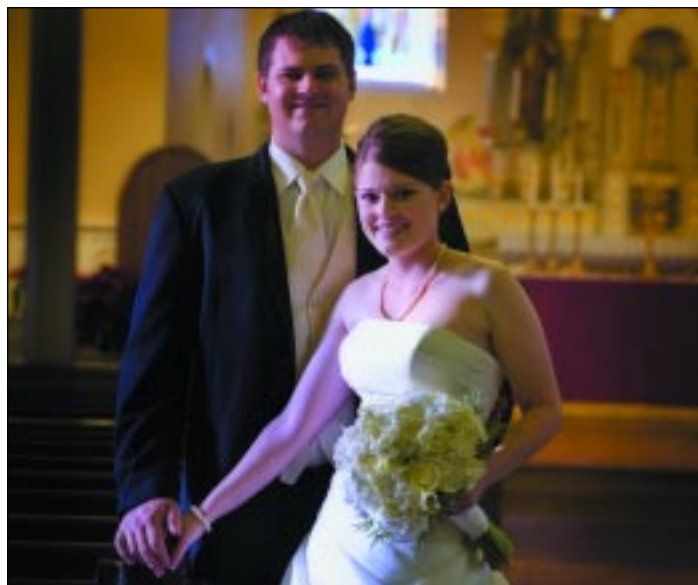
Fields is a native of Mt. Pleasant, Texas and grew up in the purebred cattle segment as his family raises and campaigns Simmental and SimAngus cattle across the nation. He was very active in the Texas Junior Simmental/Simbrah Association, and the American Junior Simmental Association. In 2010, Fields served as the national president for the junior Simmental organization. In addition, he showed several champions as a junior exhibitor at major shows in Texas and has continued to be involved in the family's operation, assisting with breeding decisions, marketing and customer relations. Fields was a member of the 2010 Texas A&M Livestock Judging Team and as a student worked in several capacities at the Texas A&M Beef Center.

"I look forward to working with purebred breeders across the country in securing top end genetics on the bull side of the equation for their programs. I am excited to meet cattlemen and travel across the country to evaluate young bulls for Bovine-Elite," said Fields.

Fields can be reached at webb@bovine-elite.com or call 800/786-4066.

Wedding Bells Ring For Hagan and Carter

Reese Hagan and Codi Carter were married on December 15, 2012 in Yoakum, Texas. Hagan grew up showing Simbrahs and Carter, from Conroe, Texas exhibited pigs and steers. They are residing in Yoakum, Texas where they are involved in Hagan Cattle Company. Congratulations Reese and Codi.



Mr. and Mrs. Reese Hagan
(photo courtesy of www.druharperphotographics.com)

For all the latest information
on Simbrah, click on:
www.simbrahworld.com

You can also subscribe to the
magazine on the home page.

To advertise in Simbrah
World, Simbrah News
or the web, contact:
Martha Hollida Garrett
marthag@southernlivestock.com
903/316-8465

Henly Wins In Fort Worth Heifer Beef Challenge

Callie Henly, Texas Junior Simmental/Simbrah Association president and Simbrah exhibitor competed in the 2013 Fort Worth Stock Show Heifer Beef Challenge and earned an \$8,000 scholarship for her 3rd place ranking. She worked her way to the top of competitors by first excelling in a written test that covered many aspects of the cattle industry. Then as one of 12 finalists, she presented a speech on why the breed of heifer (Simbrah) that she exhibited at the Fort Worth Stock show would fit the southwest commercial cattle industry.

The contest, which is primarily funded by Devon Energy, awarded nine scholarships in the amounts of \$4,000 to \$12,000. In addition to Henly, two Simmental exhibitors, Shae Mackey and Riley Sadler won \$6,000 and \$4,000 respectively in the contest. Henly is the latest TJSSA member to net big bucks for college in the contest as past winners include Kelly Garrett, Mallory Mobley, Morgan Tindle, Lindsay and Lesli Garrett and Rachel Glascock.

Wedding Bells To Ring For Baring

Roy John Baring III (Trey) and Krystal Colleen Nichols have announced their engagement with a wedding date of August 24, 2013 at St. Joseph's Honey Creek Church in Spring Branch, Texas with a reception following at Boulder Springs, in New Braunfels, Texas. Friends can follow their wedding at www.krystalandtreybaring.nearlyweds.com. Baring and family have been involved with Simbrah for many years and he is a

2003 graduate of Texas A&M. Nichols is a 2011 graduate of Texas A&M San Antonio and they both work for Baring Consultants.



Trey Baring and Krystal Nichols

AJSR To Award Scholarships

The American Junior Simbrah Roundup (AJSR) will award scholarships in June at their annual summer event. In years past three, \$1,000 scholarships have been awarded to junior Simbrah exhibitors annually.

For application and criteria for applying, please refer the AJSR website, www.simbrahroundup.net.

Sweet Additions

We've made some very significant and sweet additions to our growing program!

We want to introduce you to Smith Johnson Top Price, who is pictured. We purchased embryos from the great Priceless and are we are thrilled we did! Top Price is sired by Smith Isgrig Charismatic and we love her femininity, correctness, bone, depth of body and eye appeal!

We also added Smith Wentz O Wave Y71, a daughter of the great Oprah and Smith Nu Wave II, as well as Smith Wentz Imagine Z105, a daughter of Diva and Smith Nu Wave II. These future donors gives us two powerful females from this cow family line.

We also added a daughter of the great Oprah and Smith Nu Wave II, as well as a daughter of Diva and Smith Nu Wave II. This female would be a maternal granddaughter of Oprah, so we now have two females in our lineup representing this proven cow family line.

We also wanted to add some NF Smith Sargeant influence to our program. So we chose a Sargeant sired female out of the Smith Black Mystic cow. Mystic is now the highest valued cow of the breed as one-half interest sold for \$44,000 in Synergy V to Southwestern Farms. This is another cow family line that we have had our eye on for sometime and we're glad to have a daughter of the great Mystic.



Smith Johnson Top Price,
Smith Isgrig Charismatic x Smith Priceless

JOHNSON CATTLE CO.

Wayne and Kenny Johnson
1701 Park View • Pleasanton, TX 78064
830/391-2571

wjohnson4945@sbcglobal.net
Tim Smith, consultant 512/587-7896,
smithgenetics1@gmail.com

Simbrahs create excitement at Brush Country Bull Sale

The inaugural Brush Country Bull Sale, December 15th, featured genetics from RX Simbrah Ranch, Tom Brothers Ranch, Filegonia Cattle Company, Ford's Double S Ranch, Premier Beef and Stallion Angus Ranch. Bulls sold to Florida, Louisiana, Oklahoma, Texas and Mexico. Twenty-six Simbrah bulls averaged \$3,034; 25 SimAngus bulls averaged \$2,844; 25 SimAngus HT bulls averaged \$3,016; 15 Angus bull averaged \$2,817 and 9 Simmental bulls averaged \$3,733 Overall 100 bulls averaged \$2,980.



Carlos Rascon from Sonora, Mexico was a volume buyer.

Buyers filled the seats to bid on the Brush Country Bull Sale offering.

High-Selling Simbrah and Sim Angus HT Lots:

\$6,400 – Red Simbrah bull, “RX Blaze Shiraz” sired by RX Shiraz U803, consigned by RX Simbrah, sold to Jud Flowers, McAllen, Texas.

\$6,000 – Red Simbrah bull, “FCC Fuego Y224” sired by RX Londons Fire, consigned by Filegonia Cattle Company, sold to Bobby Kraft, New Braunfels, Texas.

\$4,800 – Black Simbrah bull, “TBR Bullet Proof Y052” sired by BMR Explorer, consigned by Tom Brothers Ranch, sold to Roy Ruiz, San Antonio, Texas.

\$4,800 – Black SimAngus HT bull, “TBR Dual Focus Y011” sired by TNT Dual Focus T249, consigned by Tom Brothers Ranch, sold to Joyce Etheridge, Kenedy, Texas.

Volume Buyers: Rollins Ranches, Florida; Pine Tree Ranch, Louisiana; Klein Ranch, Texas; and Carlos Rascon, Mexico.


Auctioneer for the sale was Terry Reagan and Allied Genetic Resources was the sale manager.













Sidney...

Your high school years are ending and your future is unlimited! We are so proud of you and are excited to see what the next chapters hold for you!



Top C Cattle Co
 Benny Cano Family
 956/499-5129
 2400 S. Jackson Rd • Pharr, Texas 78577
 topccattle@gmail

RIO GRANDE
VALLEY

RIO GRANDE
VALLEY

La Muñeca Cattle Co.

2011 Futurity



Life is Good at... LPJ

We would like to congratulate Alex and Milo on all of your show winnings and your success in school so far. We could not have asked for better grandchildren nor be any prouder of you. Your Grandpa Pelon would be very proud of you. We wish you the best of luck in your college careers. We want to take this opportunity to thank all of the good folks that have supported our children in their 4-H, FFA and school endeavors. May God Continue to Bless You !!



We invite you to come celebrate MAS VIII with us on June 26th & 29th in Wharton.



LPJ RANCH

Luis & Vicky Flores Family

Louie 956 457 0205

Patsy 956 821 3947

Jaime 956 457 1088

Louie@chorizosanmanuel.com



100% of these three champions sell at the LMC Sellabration Sale & \$20,000 Show II on March 22nd & 23rd. Come have fun with us !!



**Look for us at
your local grocer.**

CHORIZO DE SAN MANUEL, INC. • 1-800-638-8708



LMC \$elebration...

(Continued from page 5)

always done at LMC junior events. During the past six major show seasons, LMC Simbrah heifers have won more majors and money shows than any other program. LMC Simbrah bulls or sons of LMC bulls have also won 17 of the last 18 international championships. Several proven LMC herd bulls sell including LN LMC Dream Up, LMC Suave and MHF Manhattan, a popular and well-proven Braunvieh bull. There will also be ten polled two-year-old Brahman bulls selling.

"We are excited about how this event will continue to assist our clients in the marketing of their cattle. Buyers will also have a great opportunity to select from the best of over 17 different progressive breeding programs. It will be an event that you do not want to miss that will feature lots of good cattle, good people, good food and some great South Texas-LMC camaraderie," states Guerra.

Breeders participating will be 6G Ranch, Roy Balderas, Randy Barba, Rickey Burch, BETM Ranch, Darryl Caraveo, Escobas Cattle Co., Louie Flores, Kansas Polled Brahms, La Negra Cattle Co., Darryl Raub, RGV Cattle Co., Ronnie Smith, Top C Cattle Co., Lonnie Tomerlin, Bob Woods and LMC.

There will be proven herd bulls, some great bulls just off of test, some super semen packages on both old sires and the freshest genes, plus a few club calf prospects. On the female side there will be show prospects, keeper heifers, a donor cow or two, a few great embryo packages and some super

3/8 x 5/8ths new blood heifers.

Buyers not able to attend will be able to bid online via live internet broadcast at www.cimauction.com. For more information or catalog, please contact Carlos or Sister Guerra at lamunecacattle@aol.com or call 956/802-1641. Our catalog will be on our website – www.lamunecacattle.com and at www.simbrahworld.com.

Simbrah Synergy...

(Continued from page 9)

showmanship judge, while Dr. Chris Boleman sorted the cattle entries.

Bailey Scogin, Raymondville, Texas walked away as the big winner in the purebred Simbrah show and took home with her \$3,000, a buckle and banner. Her heifer was named the junior champion on her way to the overall title. The winning entry was sired by LMC Smith RFI Red Bullet and was sponsored by La Muneca Cattle Co., Linn, Texas.

Cameron Chappell, also of Raymondville, Texas won the senior division of the purebred show and then added the Simbrah Synergy Reserve Grand Champion honor to his winnings. He received \$1,500, a buckle and banner. His heifer was sired by LMC ATZ Dr. Feel Good and was sponsored by La Muneca Cattle Co.

Other division winners in the purebred show included Faith

(Continued on page 43)

The Cowman's Kind

Functional, Sound, Moderate, Productive Females = Profit Potential

"The Dream Lives On" -- Championship Genetics in a Proven Performer is what LMC Dream Girl has become! Don't miss the opportunity to obtain these unmatched genetics at the LMC \$elebration. Two championship quality heifers are offered that will get you in the winner's circle, and a breeding share in her son, LMC Gold Medal who is quite possibly the stoutest, young Simbrah sire available!

6G Ranch Cattle Sell At These Two Upcoming Events

March 22 **June 28**

6G Ranch

Fred & Sharon Grahmann

Rock Island, TX 77470

Home: (979) 234-3967

Fred: (979) 758-4759 • Michael: (361) 772-0188

Email us at: magrah71@yahoo.com



Dream Girl-daughters of her sell at LMC \$elebration, along with her son, LMC Gold Medal.



LMC Gold Medal-A breeding share sells in this Dream Girl son at LMC \$elebration.



"Our Kind" -- Once again we offer the best of our herd at the LMC \$elebration & MAS Sales. The proven, stout made, functional females are the Profit Making Kind! Our female offering carries the proven genetics of JF Net Investment, LMC Rajun Cajun, and LMC Roadhouse, and these females have been exposed to LMC Payaso (full brother to LMC Johnny Walker) and LMC Urban Cowboy. Don't miss this opportunity to put soundness, function, and great genetics into your herd!

Simbrah Synergy...

(Continued from page 42)

Onstot, Grainger, Texas who won the calf division with her 6G/LMC Rajin Cajun W908 daughter sponsored by La Muneca, while Winston Walters, Brenham, Texas saw his RFI Smith Thunderstruck daughter sponsored by Smith Genetics take the reserve calf division.

The reserve junior honor went home with Brooke Springer, Simms, Texas with her Smith Nu Wave II daughter, sponsored by Smith Genetics and Wentz Farming Co. The reserve senior division winner was Victoria Villanueva, Edinburg, Texas. Her heifer was sired by LMC ATZ Dr. Feel Good and was also sponsored by La Muneca Cattle Co.

In the percentage show, Adriana de los Santos was the grand champion winner. Her MHF Manhattan sired heifer was sponsored by La Muneca and was the senior champion. She received \$600, a buckle and banner.

Holli Baker, Burton, Texas won the Simbrah Synergy Reserve Grand Percentage Heifer title with her, LMC LF Goliath daughter, sponsored by La Muneca and BETM Ranch, Castroville, Texas. She received \$400, in addition to a buckle and banner and was the reserve senior champion also.

Caleb Rodenbeck, Brenham, Texas saw his Smith Matt N Black sired heifer from Smith Genetics win the calf division, while Addie Trojanowski, Bigfoot, Texas was named reserve calf with the Hagan's Red sired heifer from Hagan Cattle Co., Yoakum, Texas. Junior champion honors were won by Kaitlyn Davlin, El Campo, Texas with her TSC Powerline bred daughter,

sponsored by La Muneca Cattle Co. Will Hussey, College Station, Texas saw his BETM Ranch sponsored heifer take the reserve junior honors. She was sired by LMC HS Rocco.

In the Simmental portion of the show, Corey Todd with his Flying B Cut Above sired by heifer sponsored by Smith Genetics, was named grand champion. Todd received \$600, a buckle and a banner. Jeremy Friedrich, Zabcikville, Texas won the reserve grand Simmental title and \$400, plus a buckle and banner. His entry was sired by Smith McCrary Andy Black.

Exhibitors competed for \$7,500 in prize monies and buckles, in the showmanship contest as each division paid 10 places, from \$300 to \$25. The grand and reserve grand showman in each division also received buckles.

Age 9 and Under winners were: Katy Salyer, McKenna Tschirhart, Kade Schooler, Robert Stavinoha II, Lorelai Hill and Lexi Higgins. Age 10-11 winners were: Andres Villanueva, Rowdy Baker, Jacob Friedrich and Logan Perry. Ages 12-13 winners were: Carlye Rodenbeck, Victoria Villanueva, Cameron Chappell, Payton Meuth, Olivia Vela, Holli Baker, Addie Trojanowski, Sabrina Cano, Matthew Salinas and Amelia Stavinoha. Ages 14-15 winners were: McClaine Pawelek, Leandra Flores, John Paul Rodriguez, Adriana de los Santos, Rusty Story, Hadley Baker, Kaitlyn Davlin, Bailey Scogin, Colton George, and Nicole Stevenson. Ages 16 and up winners were: Candice Tindle, Kaleb Fontenot, Allison Conners, Megan Grant, Sidney Cano, Emilio Flores, Cary Perry, Shelby Giles, Blake Schultz, and Caleb Rodenbeck.

A Tribute To A Phenomenal Female

**LOOK FOR OUR CATTLE
IN THE UPCOMING
\$ellabration and
MAS Sales!**



RGV Live Action-Crimson Beauty X Rocco. As good of a bull as we have ever produced. He is Crimson Beauty's first bull calf. We have high hopes for him. Look for him at shows starting this summer at Simbrah Roundup.



RGV Gorgeous - Crimson Beauty X Ante Up. High capacity female now in the Hagan Cattle Company donor herd.



RGV/LMC Dr. Beauty - Crimson Beauty X Dr. Feel Good. The impeccable Dr. Beauty. The many time champion for Savannah and Cameron Chappell.



RGV Victoria Marie - Crimson Beauty X Majestic. Champion show heifer for John Paul Rodriguez and now in production.



RGV/LMC Ima Beauty Too - Crimson Beauty X Dr. Feel Good. Dr. Beauty's full sib currently under the direction of Mason Lee. Look for her at the majors.



**Crimson
Beauty**

We purchased ZZ Crimson Beauty from the Filegonia program back in 2006 to help my daughters' college funds. She has paid dividends for them! Her calves have generated over \$22,000 with us retaining an interest in three of them. Overall her calves have a total value of over \$60,000. What's most impressive is that all, but one of these are natural calves. We plan to start extensively flushing this cow this year with our friends from La Muneca.



RGV CATTLE COMPANY

Rene, Gina, Olivia
and Ava Vela

2913 Ocean View Dr.
Edinburg, Texas 78539
956-279-2200
Rgvrene@aol.com



Dos and Don'ts...

(Continued from page 29)

"Watch a bull after introducing him to a cow herd and determine that he is detecting cows in estrus," he explains.

4. Inseminator efficiency also important. Again, for operations using bulls to get females bred, Perry emphasizes the importance of making sure each bull has an annual breeding soundness exam, and then observe the bull with the herd to make certain he is physically able to breed cows.

In AI situations, inseminator efficiency is influenced by semen handling and the ability of the technician to deposit semen in the correct location. Semen should be deposited in the uterine body. With regard to semen handling, Perry provides these reminders:

When removing a straw from a liquid nitrogen tank, keep the canister, cane and unused semen straws as low as possible in the neck of the tank. The temperature of liquid nitrogen in a semen tank is -196° C; sperm injury can occur at temperatures as warm as -79° C.

Perry suggests that having a detailed inventory of semen may help in locating and removing straws quickly from the

tank to avoid exposure of semen to ambient temperature.

Most AI organizations recommend thawing 1-cc straws for approximately 45 seconds in a 95°-98° F water bath. It is not recommended to thaw more straws of semen than you can deposit into cows in a 15-minute period.

5. Use only CSS semen. Perry stresses the importance of using quality semen from a reputable dealer. He recommends semen be marked CSS, indicating it has gone through the Certified Semen Services audit for quality and disease testing.

6. Consider heat stress. Researchers have reported that heat stress 42 days prior to and up to 40 days after breeding can affect pregnancy rates. Perry emphasizes keeping this in mind as you plan your breeding program. He suggests shade, fans and misters can reduce the effects of heat stress in natural-service or AI programs. Perry says timed-AI protocols may also be useful to increase pregnancy rates during the hot summer months, because it does not require heat detection. He notes that estrus is more difficult to detect when cows are experiencing heat stress.

7. Be careful shipping cows after

breeding. Shipping cows between days 5 and 42 postbreeding can be detrimental to embryo survival and cause around a 10% decrease in pregnancy rates, reports Perry. He explains that critical time points for the embryo such as blastocyst formation, hatching, maternal recognition of pregnancy, and adhesion to the uterus take place during this early time of pregnancy.

"If any of these time points are disturbed, the result would lead to increased embryonic mortality and decreased pregnancy rates," he states.

Additionally, research has demonstrated that shipping cattle 45 to 60 days after insemination can result in 6% of embryos being lost.

Thus, Perry says it is important to plan on transporting cattle before the breeding season or immediately after insemination. He says shipping between 1 to 4 days after insemination appears to have minimal effect on the embryo because it is still in the oviduct. After cows have been bred 60 days, shipping is less risky.

Perry reminds producers to keep stress minimal whenever transporting cattle by handling cattle calmly and not overcrowding trailers.



COME AND GET 'EM!

La Hacienda Hinojosa is ready for you to become part of our show team! Our pedigrees are unsurpassed. The heifers featured to the left have really made La Hacienda Hinojosa proud. **LHH Syndey** (top) was Grand Champion at the TJSSA Futurity and has received countless other Champion awards. **LHH Red Lady** (middle) has been doing well for the Caraveo Family in the show ring and are excited to add her to their herd. The show heifer prospect at the bottom of the page is just one example of the type of show animals we are raising. We wish all of the juniors the best of luck on their upcoming show season.

Call and make your appointment, we would love to show you around the ranch. We have show quality animals that are ready for your selection, so come and get 'em!



32667 N. Expressway 281
Edinburg, TX 78542
(956) 381-8933

LHHRanch1954@aol.com



CMAN Cattle Co.



Robert, Darlene, Danielle and Jessica Seaman
17755 Kitzman Rd.
Cypress, TX 77429

(832) 264-7766 tel • (281) 345-9201 fax
seaman.robert@gmail.com

RND Cattle Services

Roberto N. Davila
Semen, Embryos, Custom AI Services
International Live Cattle Marketing

P.O. Box 2133 • College Station, Texas 77841
(956) 975-9050 • rndcattle@gmail.com • Se habla español

STARTING WITH THE BEST



We have the influence of Priceless in our young program.

BURESH CATTLE

Bob Buresh

5152 Loma Alta Drive • Frisco, Texas 75035

For information contact our consultant,
Tim Smith, 512/587-7896



SIMBRAH CATTLE LITTLEFOOT CATTLE COMPANY

Doug, Karen, Daniel and Kevin Lightfoot

4410 Meyer Road • Needville, Texas 77461

Home: 979/793-3482 • Cell: 832/473-0671

dlitefoot@yahoo.com • www.Littlefootcattle.com



Your source for

- Auctioneering
- Quality Replacement Females for sale at private treaty
- Buyers and sellers of quality replacement cattle. Our specialty is F-1 Braford, Brangus and Brahms, registered and commercial.
- Registered bulls of all breeds for sale or lease.

AUCTIONEER

171 Fairway Ridge
Beeville, TX 78102

Office (361) 362-Cows
Fax (361) 362-1035
Mobile (361) 362-5863
casascattle@hotmail.com
www.casascattle.com

**To advertise in Simbrah Word,
contact Martha at:**

903/316-8465

or email:

marthag@southernlivestock.com

DBR-LAND & CATTLE RANCH

Purebred Simbrah

**Offering
Registered Show Heifers,
Replacement Heifers
and Herd Sires**

Dick & Sylvia Hornback

P.O. Box 1477

Decatur, Texas 76234

940/393-3266

dick.hornback@energyworldnet.com



•DBR Simbrah cattle are heat tolerant and achieve fast weight gain on native grasses

•DBR has strong herd genetics from the best breeders in the industry

•DBR offers exceptional Simbrah with quality, low birth weights, gentle disposition, moderate frames, and solid red color with white blaze faces



RIO GRANDE VALLEY

THE BIRTHPLACE AND CAPITAL OF SIMBRAH

If you are in the market for a commercial bull, herd bull, a potload of bulls, a show heifer, replacement females, embryos or semen – the Rio Grande Valley offers **QUALITY IN QUANTITY**. We have the largest selection of Simbrahs in the USA all within one hour of each other. We have over 1500 Simbrah cows in production. We will help you find what you are looking for and have a good time doing it.

Many of Simbrah's leaders are from the RGV – from Bud Wentz helping to start the breed in the late 60's to La Muñeca starting their annual Jr. Educational Round Ups in the late 80's to the first Simbrah steer show in the early 90's and MAS in the early 2000's you can count on Valley breeders to **MAKE THINGS HAPPEN** for Simbrah.



CONGRATS to Bailey Scogin for winning MAS VII held in conjunction with the American Jr. Simbrah Round Up in Mercedes. Bailey also won Synergy V making this double win a first for the breed with her LMC Guardian Angel heifer. She has already won \$6,000 in show premiums.



Please help us **WELCOME** our youngest RGV Simbrah breeder John Patton Reavis DOB 5-30-2012, son of Wayne and Tricia Reavis. Grandson of Randy and Kathy Reavis.



CONGRATS to Savannah Chappell for winning the American Jr. Simbrah Round Up, The RGV Open, LMC Sellabration & Heart of Simbrah shows with RGV LMC Dr. Beauty. We congratulate the Round Up folks for bringing the show to the Valley. It was great for the breed and enjoyed by all.



IT IS WELL WORTH THE TRIP !!



CONGRATS to Darryl Caraveo, owner of L and B Genetics for winning International Grand Champion Simbrah Bull with LMC Red Rock co-owned with 6G Ranch and LMC.



The Benny Cano Family owners of Top C Cattle Co. have consigned some really good Simbrahs to the LMC Sellabration II sale like Top C Sweet & Saucy in photo. She is sired by LMC RFI Smith Uno.



Louie Flores and Victor Guerra will be selling this many times champion Simbrah at LMC Sellabration II. She **NEARS PERFECTION IN THE FLESH**. Her sire also sells!

- 1 SW Cattle Co. - Harlingen
Ron Wells Family
956/245-7986
swcattleco@aol.net
- 2 L and B Genetics - Edinburg
Darryl Caraveo Family
956/389-0091
darryl.caraveo@yahoo.com
- 3 La Blanquita Ranch - Mission
Ruben Garcia & Sons
956/624-1428
lbranch6@yahoo.com
- 4 La Hacienda Hinojosa - Edinburg
The Lucas Hinojosa Family
956/381-8933
LHHRanch1954@aol.com
- 5 La Muñeca Cattle Co. - Linn
Carlos X. Guerra Family
956/383-7586 (M) 802-1641
www.lamuñecacattle.com
- 6 La Negra Cattle Co. - Edinburg
Javier Moreno Family
956/607-7408
javiermcc@aol.com
- 7 LPJ Ranch - Linn
Luis Flores Jr. Family
956/457-0205
Louie@chonzosanmanuel.com
- 8 Monte Cristo Ranch - Edinburg
Jud and Margie Flowers
956/207-2087
jud@lonestarcitus.com
- 9 Reavis Farms, Inc. - Mission
Randy Reavis Family
956/585-6831
www.reavisfarms.com
- 10 RGV Cattle Company - Edinburg
Rene Vela Family
956/279-2200
Rgvrene@aol.com
- 11 San Carlos Ranch-Harlingen
Gilbert Galvan
956/873-3419
GBGalvan@aol.com
- 12 Top C Cattle Co. - Pharr
Benny Cano Family
956/499-5729
bcanon@rgvrr.com



La Morra Cattle Company - Sponsors of GREAT YOUNG ADULTS

As Simbrah breeders, we believe it is incumbent that we must do our share in the development of young business people. We supply our customers with breeding pieces- in hopes that they can become young adults that are successful in this business. Along the way, in their development and with positive reinforcement from ALL of us, they learn how to market their projects in both classroom settings and in the show ring. We truly believe in being with our young adults every step of the way.

Oh, we also have Great Cattle!!! Come by and visit anytime.

La Morra Cattle Co.

Registered Simbrahs



the *Elite*

NUESTRA CASA ES SU CASA !!

Joe B & Nelda Rodriguez

2854 CR 331 • Floresville, TX 78114

(H) 830.393.8338 • (M) 210.275.0839

joeb@lamorracattle.com

MAS Sponsor - Superbowl Sponsor

Heart of Texas Sponsor - The Elite Sale Sponsor

Success Starts with the Right Partner



From Genetics to Marketing, your ASA Field Staff professional is there with resources, advice and support. Take advantage of this strategic partnership today — contact Ed Creason to source SimGenetics or discuss ASA's programs and services.

Ed Creason

Southern Region Field Representative
8423 Kelly Sue Dr. • Stillwater, OK 74074
573.823.5635 • ecreason@simmgene.com

AMERICAN
Simmental
ASSOCIATION
www.simmental.org

Knezek Simmental/Simbrah Ranch

Red and Black Show Heifers,
Bulls & Steers

Call For Your Next Champion -
Superbowl Eligible!

Brian Knezek
2140 Morris Community Road
Yoakum, Texas 77995
361/293-3143 Home • 361/293-1590 Mobile
knezek@gvec.net
www.knezeksimmentalranh.com



CORONADO CATTLE COMPANY

George Bauslaugh, owner
13311 Queensland • San Antonio, Texas 78232
210/724-0477 • gbauslaugh@aol.com



RANCH, LLC

www.lablanquitaranch.com

Ruben Garcia and Sons,
Joaquin and Luis
Mission, Texas
956/624-1428

Monte Christo Ranch

Jud & Margie Flowers
16031 N. Monte Christo
Ranch Rd.
Edinburg, TX 78541
956/207-2087
judf@lonestarcitrus.com



Peach Creek Ranch

DAVID, LISA, FAITH
AND HOPE ONSTOT
857 North Highway 95
Granger, TX 76530 • 512-818-3560

 **Terry Reagan**
AUCTIONEER
215 W. Bandera Rd., Ste. 114-624
Boerne, TX 78006
210-414-4411
Thanks to
Simbrah Synergy 



Ronnie Reeves

9660 FM 713
Dale, Texas 78616
512/507-5719
rrtranspo@yahoo.com

LIVESTOCK PHOTOGRAPHY BY
nancy



(979) 229-9998
nmcattle@aol.com



McBRIDE FARMS

James McBride
771 Wolf Run Rd
Rosanky, Texas
78953

281/630-2893



KATHY HUTTO & JEFFREY REED

9660 FM 713 • Dale, Texas 78616
512/507-5718

Embryos for sale sired by Charismatic
*Watch for our partnership lots
with Smith Genetics in Synergy V*

Simmental and Simbrah

For cattle information contact Tim Smith, 512/587-7896



Featuring Sargeant
daughters



KENTUCKY DIVISION
Quarter Horses, Simmental and Simbrah Cattle

Jason Smith, Aimee & Andy Nienaber, Lisa & Nathan Naive, William & Beth Smith
For information contact Tim Smith, smithgenetics1@gmail.com • 512/587-7896



Smith Andy N Black



Save the date...

- February 26-International Simmental/Simbrah Sale, Houston, Texas
- February 27-International Simbrah Show, Houston, Texas
- March 9-Houston Livestock Show and Rodeo Junior Simbrah Show, Houston, Texas
- March 22-23-Sellabration Show and Sale, La Munecca Cattle Co., Linn, Texas
- May 18-19-Smith Genetics Annual Cow Camp, Giddings, Texas
- May 18-Buzzard Hollow Ranch Designer's Classic Sale, Granbury, Texas
- June 13-16-Texas Junior Simmental/Simbrah Association Futurity, Bryan, Texas
- June 26-29-American Junior Simbrah Roundup and MAS Sale, Wharton, Texas
- September 21-22-The Elite Sale, Hagan Cattle Company, Yoakum, Texas
- October 5-La Munecca's 26th Annual Junior Roundup, Linn, Texas
- October 12-Heart of Texas Simmental/Simbrah Association Sale, Hearne, Texas
- October 17-State Fair of Texas Junior Simbrah Shows Dallas, Texas
- October 18-State Fair of Texas Open Simbrah Show, Dallas, Texas
- October 26-27-Synergy VI Show and Sale, Giddings, Texas
- December 14-2nd Annual Brush Country Bull Sale, Campbellton, Texas

Index To Advertisers

5W Cattle Co.	44	Maiorano, Bob & Tammy	7
6G Cattle Co.	40	MAS Breeders	35
7N Ranch	32	McBride Farms	46
American Simmental Asso	46	McCrary Farms	28
Bar P Bar Simbrah	30	Monte Christo Ranch	44, 46
Baring Cattle Co.	8	Neumann Farms	2
BETM Ranch	IFC	NF Smith Sargeant	2
Bovine Elite	36	Peach Creek Farms	46
Buresch, Bob	43	Pine Ridge Ranch	24, 25
Burch Farms	3, 31	Reavis Farms	2, 31, 33, 44, 48 IBC
Leo Casas	43	Reagan, Terry	46
CMAN Cattle Co.	43	Reeves, Ronnie	46
Coronado Cattle Co.	46	RGV Cattle Co.	41, 44
DBR Cattle Co.	43	RFI Real Deal	31
Diamond RF Farms	3, 31	Rio Grande Valley Breeders	44
Elite Sale	18-19	RND Cattle Services	43
Garcia Cattle Co.	44	San Carlos Ranch	44
Hagan Cattle Co.	2, 9, 18-19	Smith Farms	1, 2, 48
Hutto Farms	46	Smith Genetics	2, 31, 33, 48
Knezek's Simmental/Simbrah	46	Smith Genetics Kentucky	46
Johnson Cattle Co.	37	Smith Nu Wave II	48
L&B Genetics	44	Smith Stout N Black	33
La Blanquita Ranch	44, 46	Smith XtraOrdinary	31
La Hacienda Hinojosa	42, 44	Southwestern Farms	17, 27, 33
Littlefoot Cattle Co.	43	Temperance Cattle Co.	30
La Morra Ranch	45	Top C Cattle Co.	38, 44
La Munecca Cattle Co.	44, BC	Triple P Ranch	7
La Negra Cattle Co.	44	Walters Livetock Ent.	2, 29
LPJ Ranch	39, 44	Wentz Farming Co.	4

Simbrah World is an 8 1/2 x 11 publication, produced by Southern Livestock Publishing and provides news for and about the Simbrah breed.

Space Rates:

Size:	B&W:	1 Extra Color:	4/Color:
Full Page	\$725.00	\$875.00	\$1,100
2/3 Page	575.00	725.00	950.00
1/2 Page	440.00	590.00	815.00
1/3 Page	350.00	500.00	725.00
1/4 Page	220.00	370.00	595.00

Deadlines for Publications

Spring Issue-February 1st
Fall Issue-September 1st

COPY AND CONTRACT REGULATIONS

Advertisers and advertising agencies assume liability for all content of advertisements printed, and also assume liability for any claims arising from any such advertisements made against the publisher. The publisher reserves the right to reject advertising, which is felt unsuitable for publication.

EDITORIAL POLICY

Opinions expressed are the writer's and not necessarily those of Simbrah World.

LAYOUTS AND PROOFS

Although every effort will be made to provide proofs to advertisers on all ads, we only guarantee proofs on ads that arrive in the Southern Livestock Publishing office prior to or on deadline.

Simbrah Publications Committee

Bill Travis, Carlos Guerra, Tim Smith, Trey Baring, Cody Witzkoski, Craig Schultz, Doug Schultz and Richard Foster.

Southern Livestock Publishing, Inc.

Mailing Address:

P.O. Box 791364 • San Antonio, TX 78279-1364

Office Located:

407 Breesport • San Antonio, TX 78216

Phone: 210/524-9697

Fax: 210/524-9690

E-mail: slivestock@southernlivestock.com

Riding Wave After Wave of Championships

His impact can only be felt by purchasing his calves from owners of the bull, as semen is not marketed. Smith Nu Wave is also involved in the



All These Champions Have One Thing In Common—They All Carry Smith Nu Wave II Genetics



Smith Wentz Blackfoot ~ A Smith Nu Wave II son out of the great Diva cow. This young herd sire is now in the Southwestern Farms program. 2013 National Reserve Intermediate Champion Bull.



Smith Hagan Expressive ~ A new donor in the Reavis program and a full sister to Caleb Rodenbeck's 2012 National and International Champion Heifer, also a sister to the 2010 International Champion Female. Sired by Nu Wave II.



Smith Wentz Diamond Diva ~ A Smith Nu Wave II daughter out of Diva ~ makes her a full sister to the \$40,000 Dream Girl. She is owned by Sophie Palmore of Southwestern Farms. 2013 National Intermediate Champion Female.



Smith Wentz Up Top ~ Now owned by Smith Genetics and Reavis Farms. A son of Smith Nu Wave II and Diva.



Smith Isgrig Charismatic ~ This son of Smith Nu Wave II is proving to be a powerful sire! His EPDs have consistently ranked him at the top of the breed and his progeny have been in demand.



Smith Wentz Superior Mom ~ A Smith Nu Wave II daughter that was successfully campaigned by Candice Tindle with wins at the 2012 Fort Worth and Houston Junior Shows.

Nu Wave II... His numbers tell you what he can do and his calves prove to you what he will do and has done!

REAVIS FARMS, INC.

Wayne and Jim Bob Reavis
6801 W. Mile 7 Road • Mission, Texas 78574
956/585-6831
JWRreavis@aol.com • www.reavisfarms.com



Ronnie & Susan Smith
7736 FM 428 • Denton, Texas 76209
817-625-4366, O • 817- 874-3431, M
susan@americanrecyclinginc.com



Tim and Haley Smith
P.O. Box 330 • 1316 PR 2261
Giddings, Texas 78942
512/587-7896
smithgenetics1@gmail.com
www.smithgenetics.com

RFI the PREFIX

Can't Wait to See the Next Calf Crop
Wearing the RFI Prefix.

RFI Real Deal



A polled son of Smith Evan, and out of RFI Dominoe, a Smith Also N Red daughter. His EPDs rank him in the top 3 % of breed for TI; top 4% for API; top 5% for CE; top 10% for Weaning; top 15% for Yearling; top 20% for Birth and top 25% for MCE. Thank you to Smith Genetics, Burch Farms, Diamond RF Farms and Southwestern Farms for joining us in ownership on this young sire. We think he has tremendous potential.

RFI Priceless Dream 247



Sired by Smith Isgrig Charismatic, one of the leading EPD sires of the breed. Out of Smith Priceless, one of the great matriarchs of the breed, who now has generated more than a quarter of a million dollars in sales. We purchased a flush in Priceless and 247 is the result. We are excited about incorporating Priceless genetics into our program and are confident 247's impact will be huge!

Smith Wentz Up Top Z103



A polled son of Smith Nu Wave II, and out of LMC Miss Diva, the dam to Dream Girl, Rita, Moose and Wave Amigo. Owned with Smith Genetics. He is our up and coming young sire.

RFI Miss Debutante



A polled daughter of Smith NF Simply Great, and out of our donor Topanga, a Johnnie Walker daughter. We are excited to have this female joining our donor program and want to thank Smith Genetics for purchasing half-interest in her.

RFI... watch for the next set of calves wearing THE prefix.

REAVIS FARMS, INC.

WAYNE & JIM BOB REAVIS
956-585-6831

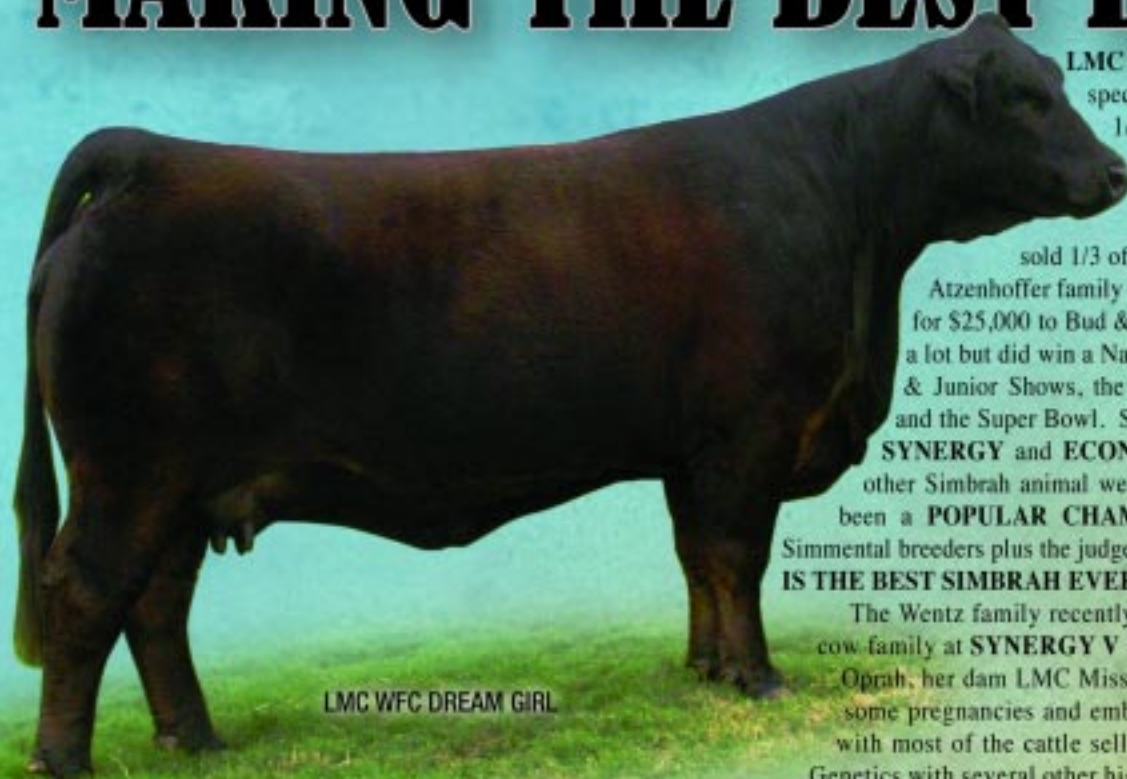
6801 W. Mile 7 Road, Mission, TX 78574
www.reavisfarms.com • WReavis@aol.com

Calf scramble certificates welcome.



Reavis Cattle eligible for Synergy, MAS, The Elite and Superbowl Shows.

MAKING THE BEST BETTER



LMC WFC DREAM GIRL

LMC WFC DREAM GIRL has been special since she was born. We sold 1/3 of her as the Pick of the Litter when she was two months old for \$7,000 to Jordan Grahmann who made over \$20,000 with her. We sold 1/3 of the 2nd pick, LMC WFC Rita to the Atzenhoffer family who won MAS with her and sold her for \$25,000 to Bud & Lupita. Dream Girl was not shown a lot but did win a National Show, both the Houston Open & Junior Shows, the \$10,000 at the tough SA Jr. Show and the Super Bowl. She has created more **GOOD WILL**, **SYNERGY** and **ECONOMIC PROGRESSION** than any other Simbrah animal we have ever known. She has always been a **POPULAR CHAMPION** amongst the Simbrah and Simmental breeders plus the judges that judged her. **WE THINK SHE IS THE BEST SIMBRAH EVER BORN.**

The Wentz family recently dispersed their share of this great cow family at **SYNERGY V** as they owned her grand dam LMC Oprah, her dam LMC Miss Diva and several progeny of both, some pregnancies and embryos. They grossed over \$290,000 with most of the cattle selling to Southwest Farms and Smith Genetics with several other high dollar progeny selling by private

treaty. You can expect more goodness to come from these cattle. **DREAM GIRL** topped MAS

VI selling for \$42,000, a breed record. As we continue to roll the generations, we feel that the best is yet to come as can be seen in this ad with progeny by LMC GIG'EM, LMC HS Rocco and LMC Rhino with more matings being made now.



LMC SWEET DREAMS sold for \$16,000 and is a donor owned by BETM Ranch. She is a LMC Gig'em daughter. **MAMA COW !!!**



LMC BETM DREAMSICLE sold for \$15,000 and is a full sister to Sweet Dreams also owned by BETM Ranch. She is **POWERFUL!**



LMC Red Rock is a \$15,000 herd bull that is the 2012 International Champion bull. He is sired by Rocco and is co-owned with Darryl Caraveo. Breeding Shares are available. He has it all!!!



LMC GOLD MEDAL is the 2013 NATIONAL GRAND CHAMPION AT 11 MOS. OF AGE. We are selling a breeding share in him at the LMC Sellabration II Sale. **HE CAN MAKE YOUR BEST BETTER.**

Dream Girl Team

6G Ranch
361-772-0188

BETM Ranch
956-607-1515

Louie Flores
956-457-0205

La Muñeca
956-802-1641

lamunecacattle@aol.com



One of two **BABY DOLLS** (full sisters to Gold Medal) sired by LMC Rhino, that sell in their entirety at LMC Sellabration II. **MAJOR LEAGUE DONOR & SHOW PROSPECTS !!** This newest generation = **GENETIC LEAD TIME** that can help you **MAKE THE BEST BETTER !!!**